

**NARRATIVE**

This survey was made at the request of Dorothy McCurdy to establish her property lines and the right of way for the road through the center of Section 28. I retraced the exterior lines of Sections 28 and 29. I was unable to locate any evidence of the corners to Sections 20, 21, 28 and 29, the 1/4 corner to Sections 28 and 29, and the 1/4 corner to Sections 28 and 21. The areas of these corners have been extensively worked by leveling, pond construction and logging.

I therefore place the Northwest corner of Section 28 by double proportionate measure as follows; The East-West position at a proportionate distance between the North 1/4 corner of Section 29 and the Northeast corner of Section 28. The North-South position at a proportionate distance between the Southwest corner of Section 28 and the spring branch 2.5 chains North of this corner. These proportions are based on calls in GLO field book 352, a retracement and continuation of survey by Gray in 1867, by Kimbrell in 1891.

I now place the North 1/4 corner of Section 28, proportioning between the Northwest corner and the Northeast corner of Section 28 using both bearings and distances called in GLO field book 352.

I now place the 1/4 corner to Sections 28 and 29 at proportioned distance between the Northwest and Southwest corners of Section 28, on the basis of distances called in GLO field book 352.

I contacted Mr. Joe Scott, a local resident of some 42 years. He pointed out the position of the 1/4 corner to Sections 28 and 29 as he remembered it before it was destroyed. The point he indicated, on the Southerly bank of a small draw, was within a few feet of my proportioned position. (See statement below)

I found 5/8" iron pins at points shown on unrecorded maps of survey by the county surveyor in 1972. These fit the existing road through the center of Section 28, but they are at a great variance with corners they are supposed to represent on these maps. See also map of survey 87-73.

I now break these sections in the normal manner to establish 1/4, 1/16 and property corners as shown.

The road right of way is established as shown on sheet 2 of 2. I generally followed the fence line on the North side of the presently traveled road, and established a 50 foot wide right of way. On the East end I utilized the 33 foot wide County owned parcel as shown, and where the fence comes to 17 feet North of the County parcel. I parallel said County parcel as shown. Road right of way is to be established by conveyance.

REGISTERED PROFESSIONAL LAND SURVEYOR  
 DUANE I. GRIFFITH  
 644

*Duane I. Griffith*  
 Duane I. Griffith, O.P.L.S. 644  
 Bagett, Griffith and Associates

**AFFIDAVIT**

I, Joe Scott, do hereby state, under oath, that approximately forty years ago I saw the 1/4 corner common to Sections 28 and 29, a mound of stone and a larger stone in the center with bearing trees. The corner as now set by Duane I. Griffith is in the immediate area of the original corner to the best of my memory.

*Joe Scott*  
 Joe Scott

Subscribed and sworn before me this 7<sup>th</sup> day of JANUARY, 1980 MB1

*Rickey G. Robinson*  
 RICKEY G. ROBINSON  
 NOTARY PUBLIC - OREGON  
 My Commission Expires 7/21/84

**LEGEND**

- Found monument of record, remonumented GLO corner
- Found monument of record.
- ⊙ Set brass cap at proportionate distance, see note.
- Set 5/8"x24" iron pin with plastic cap marked, B-G-A SURVEY MARKER
- Found unrecorded monument, as shown.
- ( ) Record bearing and distance, G.L.O.
- [ ] Record bearing, survey 38-80.
- Existing fence line.

**REFERENCE MATERIAL**

- Government Land Office field notes, Book 79.
- Government Land Office field notes, Book 352.
- Maps of surveys, recorded in the Union County Surveyor's Office. 32-72; 87-73; 38-77; 38-80; 39-80.
- Unrecorded map of proposed Tamarack Springs Road, dated 10-4-1972
- Unrecorded map of county roads in section 28, no date.
- Deed descriptions, recorded in the Union County Clerk's Office. Vol 96 pg. 589; Vol. 144 pg. 440. Microfilms, 24976; 35060; 41853.

**NOTES**

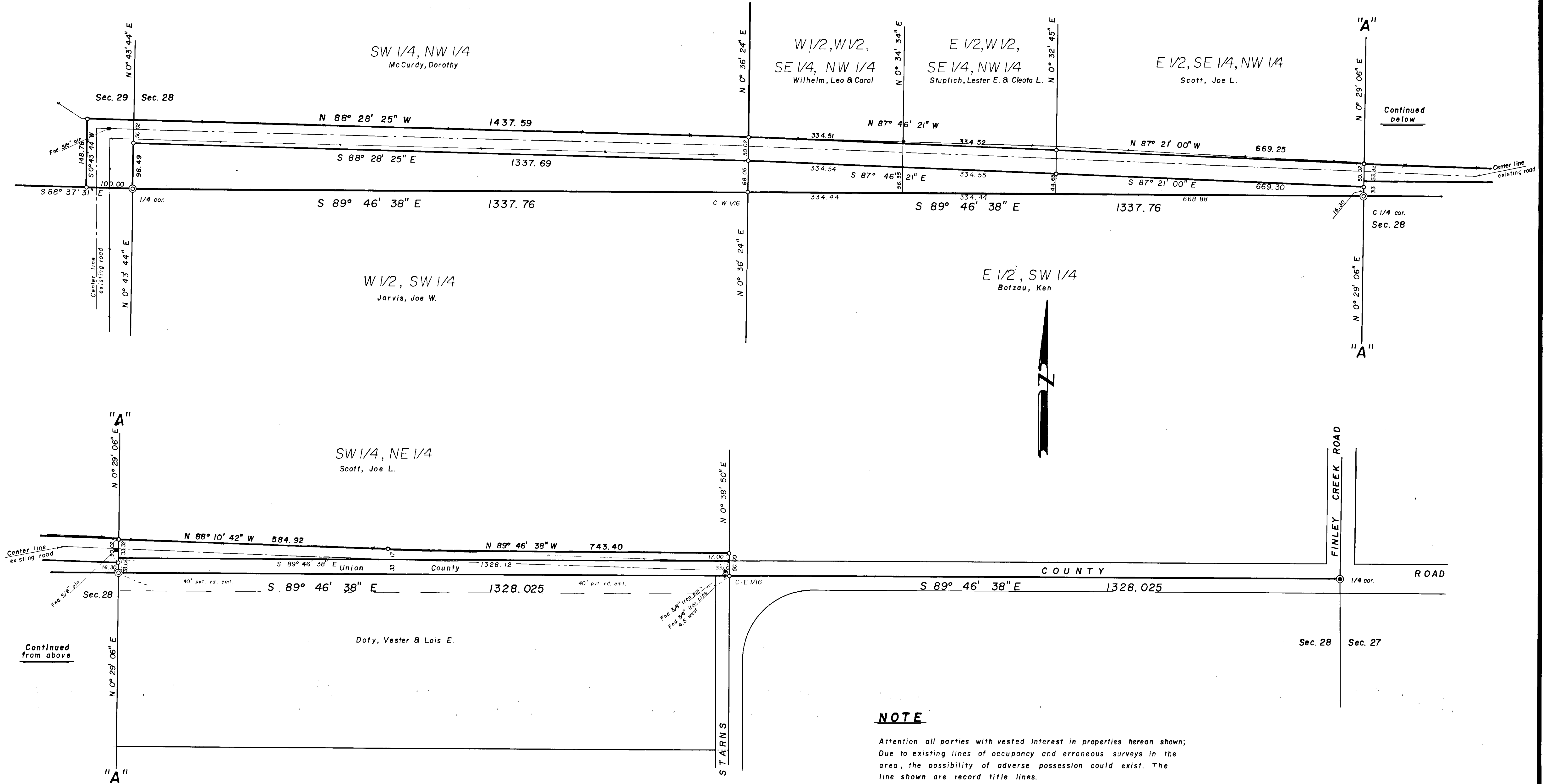
- For monumentation information see, record of monumentation forms filed separately.
- Attention all parties with vested interest in the properties hereon shown;
- Due to existing lines of occupancy and erroneous surveys in the area, the possibility of adverse possession could exist. The lines shown are record title lines.

**BASIS OF BEARING**

Survey no. 32-72



BAGETT - GRIFFITH & ASSOCIATES LaGrande, Oregon Map of Survey	
Sections 28 & 29 T 1 N, R 38 E, W.M. UNION COUNTY, OREGON	
SURVEYED FOR	DOROTHY McCURDY
SURVEYED BY	dig / gtb / rgr. 10/1980
Scale: 1" = 500'	Drawn by: dig 10/1980



**NOTE**

Attention all parties with vested interest in properties hereon shown; Due to existing lines of occupancy and erroneous surveys in the area, the possibility of adverse possession could exist. The line shown are record title lines.

For monumentation information, see record of monumentation forms filed separately.

REGISTERED  
PROFESSIONAL  
LAND SURVEYOR  
  
DUANE I. GRIFFITH  
644

**SHEET 2 of 2**

BAGETT - GRIFFITH & ASSOCIATES LaGrande, Oregon Map of survey	
Sections 28 & 29 T 1 N, R 38 E, W.M. UNION COUNTY, OREGON	
SURVEYED FOR	DOROTHY McCURDY
SURVEYED BY	dig / gtb./r.gr. 10/1980
Scale: 1" = 100'	Drawn by: dig. 10/1980