

BASIS OF BEARING

SURVEY NUMBER 63-73

REFERENCE MATERIAL

SURVEY NUMBER 63-73
1922 REMONUMENTATION OF LA GRANDE



LEGEND

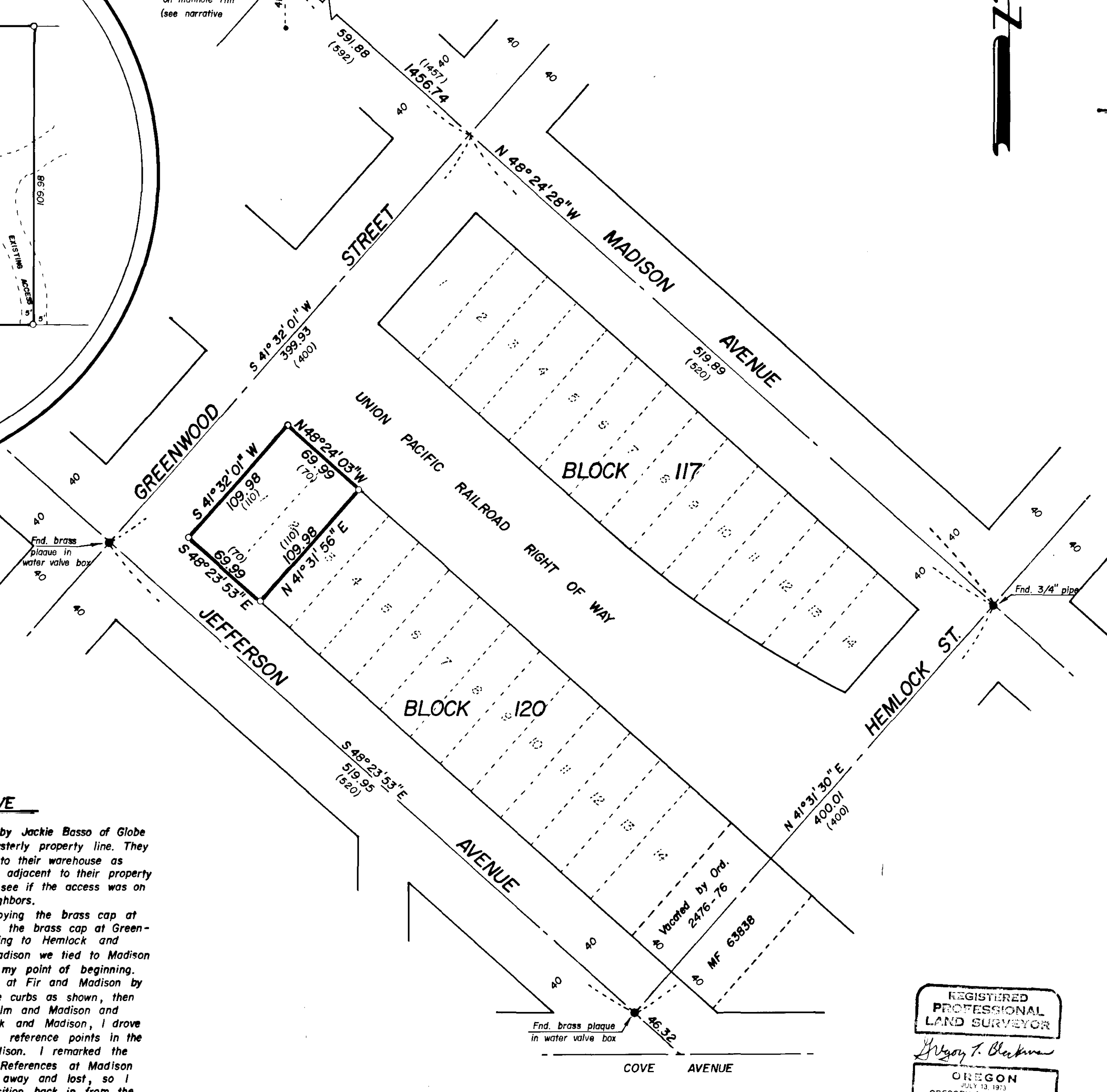
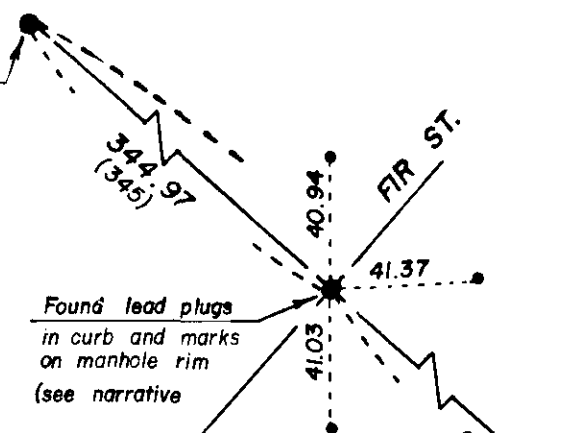
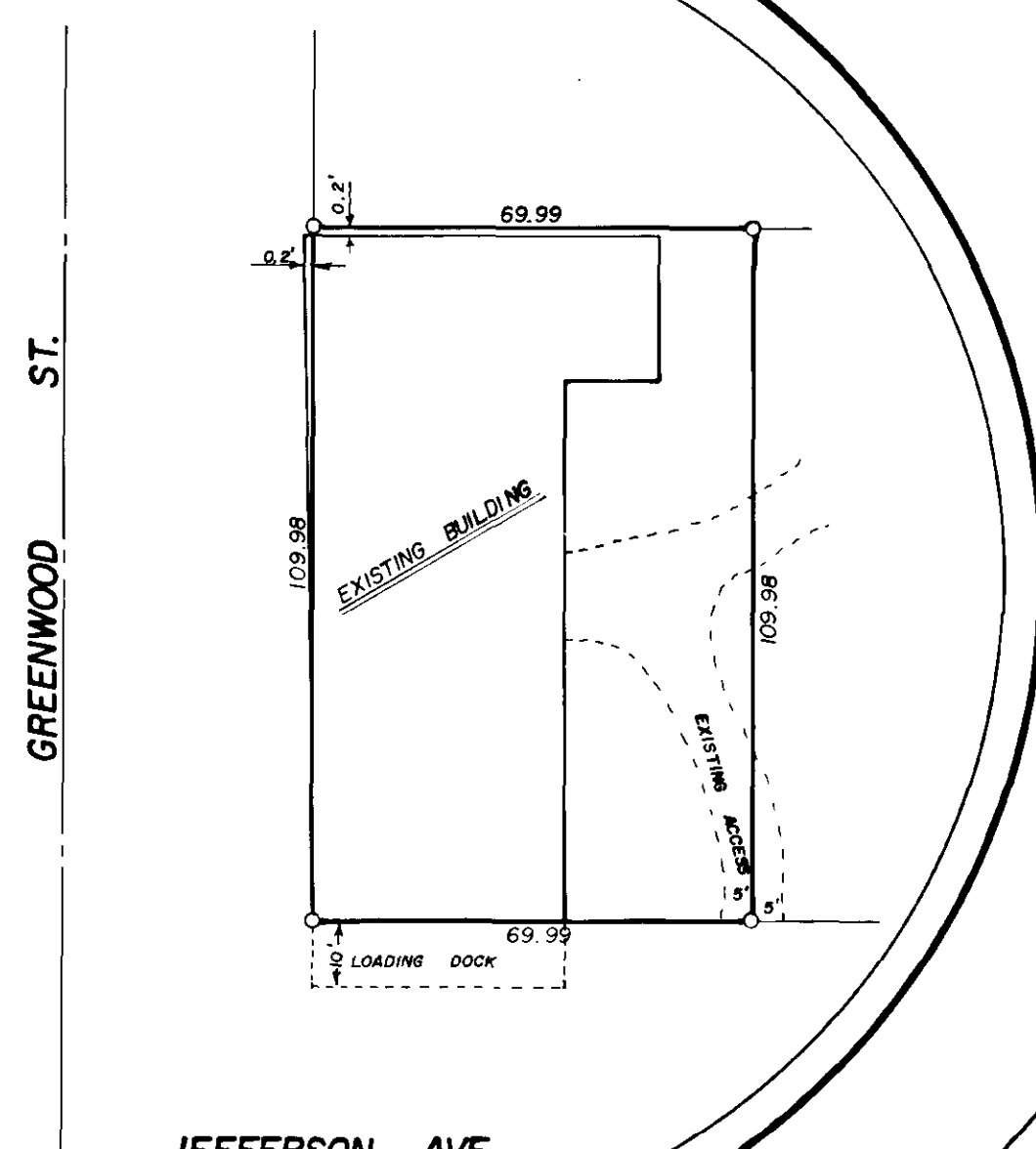
- Found monument of record
- Set 5/8" x 24" iron pin with plastic cap marked 'B-G-A SURVEY MARKER'
- (520) Record distance
- Centerline

NARRATIVE

This survey was requested by Jackie Basso of Globe Furniture, to locate their Southeasterly property line. They are currently using an access into their warehouse as shown on the plat. The property adjacent to their property is for sale and they wanted to see if the access was on their own property or on the neighbors.

I began my survey by occupying the brass cap at Jefferson and Hemlock, sighting the brass cap at Greenwood and Jefferson and traversing to Hemlock and Madison. From Hemlock and Madison we tied to Madison and Elm, then closed back to my point of beginning.

I reestablished the monument at Fir and Madison by locating 3 reference points in the curbs as shown, then by occupying the monument at Elm and Madison and sighting the monument at Hemlock and Madison, I drove an intersect through the original reference points in the curbs and the centerline of Madison. I remarked the manhole ring with crosses (-|-). References at Madison and Greenwood have been worn away and lost, so I proportioned the intersection position back in from the preceding information. I then proportioned the block corners from this information. I encountered no unusual problems with this survey.



BUILDING DETAIL

REGISTERED PROFESSIONAL LAND SURVEYOR
Gregory T. Blackman
OREGON
JULY 13, 1973
GREGORY T. BLACKMAN
991

BAGETT - GRIFFITH & ASSOCIATES Oregon		
LOTS 1 AND 2 BLOCK 120 CHAPLIN'S ADDITION LA GRANDE COUNTY, OREGON		
SURVEYED FOR	JACKIE BASSO	
SURVEYED BY	GTB	9/80
Scale: 1" = 60'	Drawn by: RGR	9/80

08-69