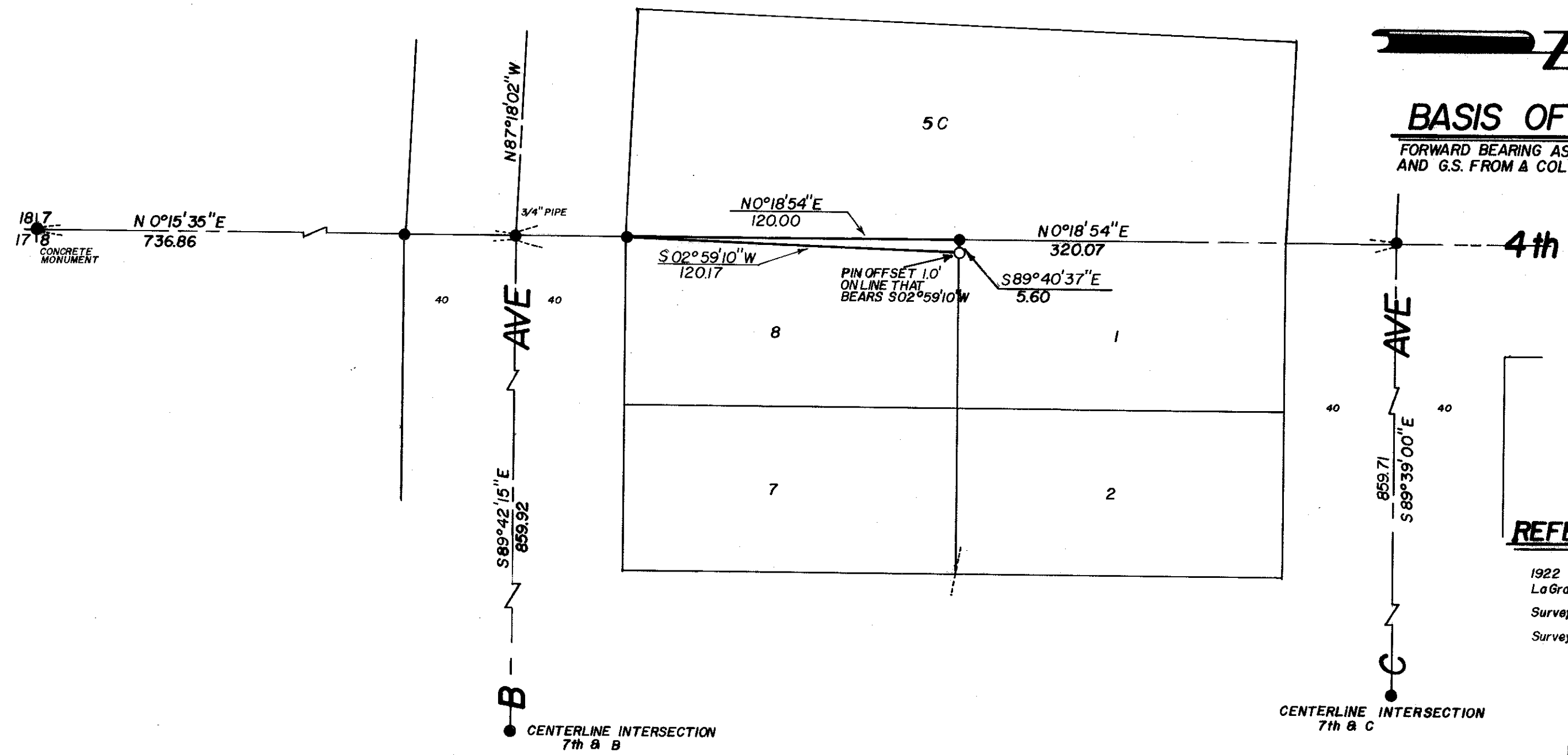




# BASIS OF BEARING

FORWARD BEARING AS PUBLISHED BY U.S.C. AND G.S. FROM A COLLEGE TO A VALLEY



## REFERENCE MATERIAL

1922 McLain Remonumentation of LaGrande  
 Survey No. 52-72  
 Survey No. 59-78

REGISTERED PROFESSIONAL LAND SURVEYOR

*Duane I. Griffith*

OREGON  
 JULY 10, 1964  
 DUANE I. GRIFFITH  
 644

## NARRATIVE

THIS SURVEY WAS ORDERED BY HAROLD ROGERS TO LOCATE THE WEST LINE OF AN EXCEPTION ON THE WEST SIDE OF LOT 8 OF BLOCK 1, CHAPLINS ADDITION. NO UNUSUAL CONDITIONS FOUND.

## LEGEND

- FOUND MONUMENT OF RECORD
- SET 5/8" x 30" IRON PIN WITH A PLASTIC CAP MARKED BGA SURVEY MARKER

|   |               |      |
|---|---------------|------|
| <b>BAGETT - GRIFFITH &amp; ASSOCIATES</b><br>LaGrande Oregon    |               |      |
| A PARCEL IN LOT 8, BLOCK 1<br>CHAPLINS ADDITION TO<br>LA GRANDE |               |      |
| UNION COUNTY, OREGON  |               |      |
| SURVEYED FOR  | HAROLD ROGERS |      |
| SURVEYED BY   | DIG           | 8-80 |
| Scale: 1" = 40'   | Drawn by: ARC | 8-80 |