

# NARRATIVE

THIS SURVEY WAS DONE TO CLARIFY THE CURVE DATA ALONG HAWTHORNE DRIVE. MODELAIRE HEIGHTS ADDITION DOES NOT CLOSE MATHEMATICALLY, AND I THEREFORE DEVELOPED THE CURVE USING FOUND MONUMENTS. THERE ARE NO MONUMENTS SHOWN ON MODELAIRE HEIGHTS AND THEREFORE I CALL ALL OF THE FOUND MONUMENTS UNRECORDED.

I ESTABLISHED THE CURVE ON HAWTHORNE DRIVE BY LOCATING MONUMENTS AS SHOWN. I THEN DROVE AN INTERSECT FOR THE  $\Delta$  ANGLE AND COMPUTED THE TANGENT DISTANCE FROM THE  $\Delta$  TO THE MONUMENT FOUND AT THE INTERSECTION OF HAWTHORNE DRIVE AND MODELAIRE DRIVE. I ENCOUNTERED NO OTHER PROBLEMS.



## BASIS OF BEARING

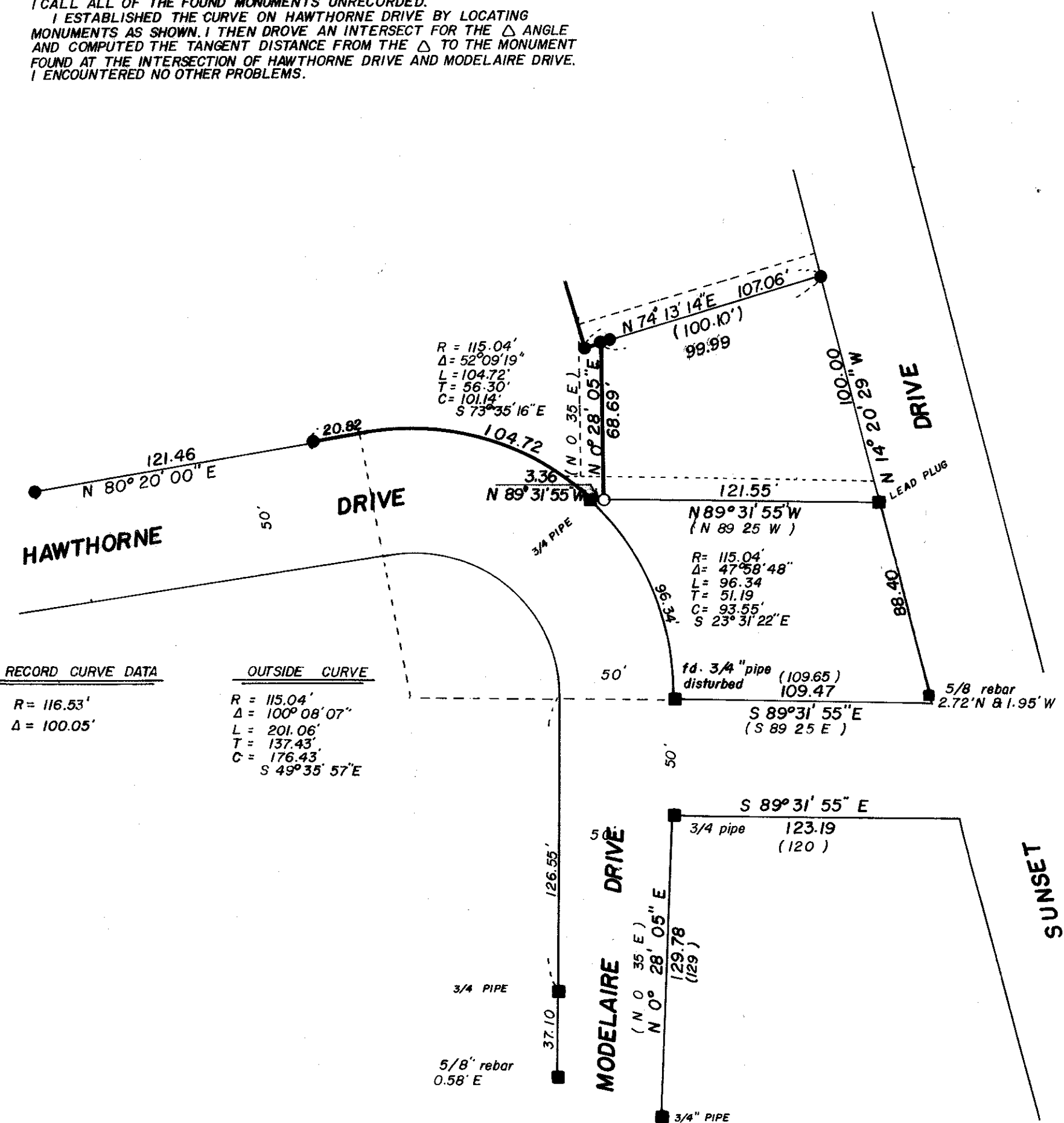
FORWARD BEARING AS PUBLISHED BY THE U.S.C. AND G.S FROM A COLLEGE TO A VALLEY

## REFERENCE MATERIAL

PLAT OF MODELAIRE HEIGHTS  
 SURVEY NO. 22-72  
 114-78  
 15-67

## LEGEND

- FOUND MONUMENT OF RECORD
- SET 5/8" x 30" REBAR WITH PLASTIC CAP MARKED BGA SURVEY MARKER.
- FOUND UNRECORDED MONUMENT
- ( ) RECORD BEARING & DISTANCE



RECORD CURVE DATA	OUTSIDE CURVE
R = 116.53'	R = 115.04'
Δ = 100.05'	Δ = 100° 08' 07"
	L = 201.06'
	T = 137.43'
	C = 176.43'
	S 49° 35' 57" E

REGISTERED  
 PROFESSIONAL  
 LAND SURVEYOR  
*Gregory T. Blackman*  
 OREGON  
 JULY 13, 1973  
 GREGORY T. BLACKMAN  
 991

BAGETT, GRIFFITH & ASSOCIATES La Grande, Oregon		
Map of Survey HAWTHORNE DRIVE CURVE MODELAIRE HEIGHTS ADD.		
LA GRANDE UNION COUNTY, OREGON		
SURVEYED FOR	GRANDE RONDE MED. CENTER III	
SURVEYED BY	G T B	6/80
Scale: 1" = 50'	Drawn by: G T B	6/80