

NARRATIVE

The only unusual conditions found on this survey was on the Range line between R 37 & 38 E. This Range line was originally run by T.W. Davenport in 1863 for the subdivision of T 4 S, R 38 E. In 1881 this line was retraced by W.B. Barr who found no problems. Then in 1882, H.W. Gradin made a retracement of this line for the subdivision of T 4 S, R 37 E. In this retracement Gradin set new corners for his subdivision. In my retracement I found corners set by both Davenport and Gradin as shown. I re-monumented this line in the following manner. I place the Range line on found original corners by Davenport which are the N.W. corner of sections 31, 30, & 19. I then place found Gradin's 1/4 corners to sections 25 & 36 on the Range line, due east or west of found corner position. These moves amount to 3 ft. or less. I place the N.E. corner of section 25 at the intersection of a line from the N 1/4 corner of section 25 to the found N.E. corner and the Range line. This move was about 4 feet. In Gradin's retracement he made calls to Davenport's corners, I therefore place the N.E. corner of section 36 on the Range line at the proportionate distance north of the N.W. corner of section 31. I also place the 1/4 corners to sections 30 & 31 on the Range line at proportionate distances south from Gradin's corners. The survey was completed in the normal manner.

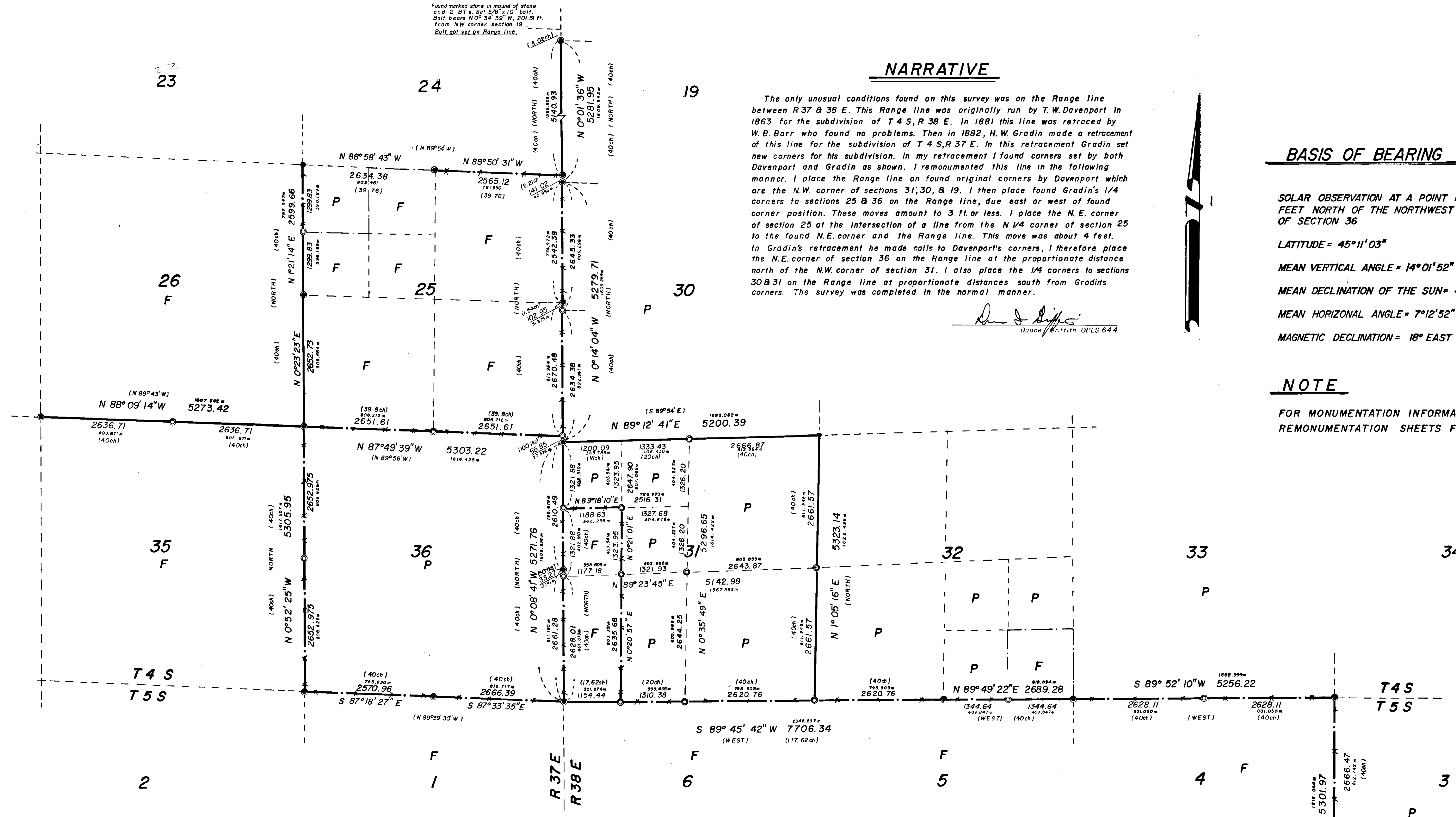
Duane I Griffith
Duane I Griffith OPLS 644

BASIS OF BEARING

SOLAR OBSERVATION AT A POINT 1200* FEET NORTH OF THE NORTHWEST CORNER OF SECTION 36
 LATITUDE = 45°11'03"
 MEAN VERTICAL ANGLE = 14°01'52"
 MEAN DECLINATION OF THE SUN = -4°16'23"
 MEAN HORIZONTAL ANGLE = 7°12'52"
 MAGNETIC DECLINATION = 18° EAST

NOTE

FOR MONUMENTATION INFORMATION SEE REMONUMENTATION SHEETS FILED SEPARATELY.



FOREST SERVICE LANDS

- T 4 S, R 37 E
 - Section 26, all.
 - Section 35, all.
 - Section 25, S 1/2; NE 1/4; E 1/2 of the NW 1/4; SW 1/4 of the NW 1/4.
 - Section 36, none.
- T 4 S, R 38 E
 - Section 31, Government lots 2, 3, and 4.
 - Section 32, SE 1/4 of the SE 1/4.
 - Section 33, none.
- T 5 S, R 38 E
 - Sections 4, 5, and 6, all.

SURVEYOR'S STATEMENT

I, Duane I Griffith, registered land surveyor in the state of Oregon, hereby certify that this plat and the notes hereon, or attached, are a true and correct representation of the survey I made during October and November, 1979 and during May and June, 1980, for the U.S. Forest Service, in accordance with the statutes of the State of Oregon and with the articles of my contract.

Duane I Griffith
Duane I Griffith OPLS 644

LEGEND

- FOUND G.L.O. CORNER REMONUMENTED IN 1969 WITH BRASS CAP
- ⊙ FOUND G.L.O. CORNER EVIDENCE, SET 2 1/2" x 30" IRON PIPE WITH BRASS CAP
- ⊙ SET 2 1/2" x 30" IRON PIPE WITH BRASS CAP AT A PROPORTIONATE DISTANCE
- () RECORD DISTANCE AND BEARING
- (321.567) METRIC DISTANCE (1m = 3.2808333')
- NATIONAL FOREST BOUNDARY, POSTED
- P PRIVATELY OWNED LAND
- F NATIONAL FOREST LAND

REGISTERED PROFESSIONAL LAND SURVEYOR
Duane I Griffith
 OREGON JULY 19 1964
 DUANE I GRIFFITH 644

BAGETT, GRIFFITH & ASSOCIATES
 La Grande, Oregon
 Map of Survey
 National Forest Boundaries in
 T 4 S, R 37 & 38 E and
 T 5 S, R 38 E, W.M.
 UNION COUNTY, OREGON

SURVEYED FOR	U.S. FOREST SERVICE
SURVEYED BY	dig-gtb-rgr
Scale: 1"=1000'	Drawn by: r.g.r.-d.g. June 1980