

BASIS OF BEARING

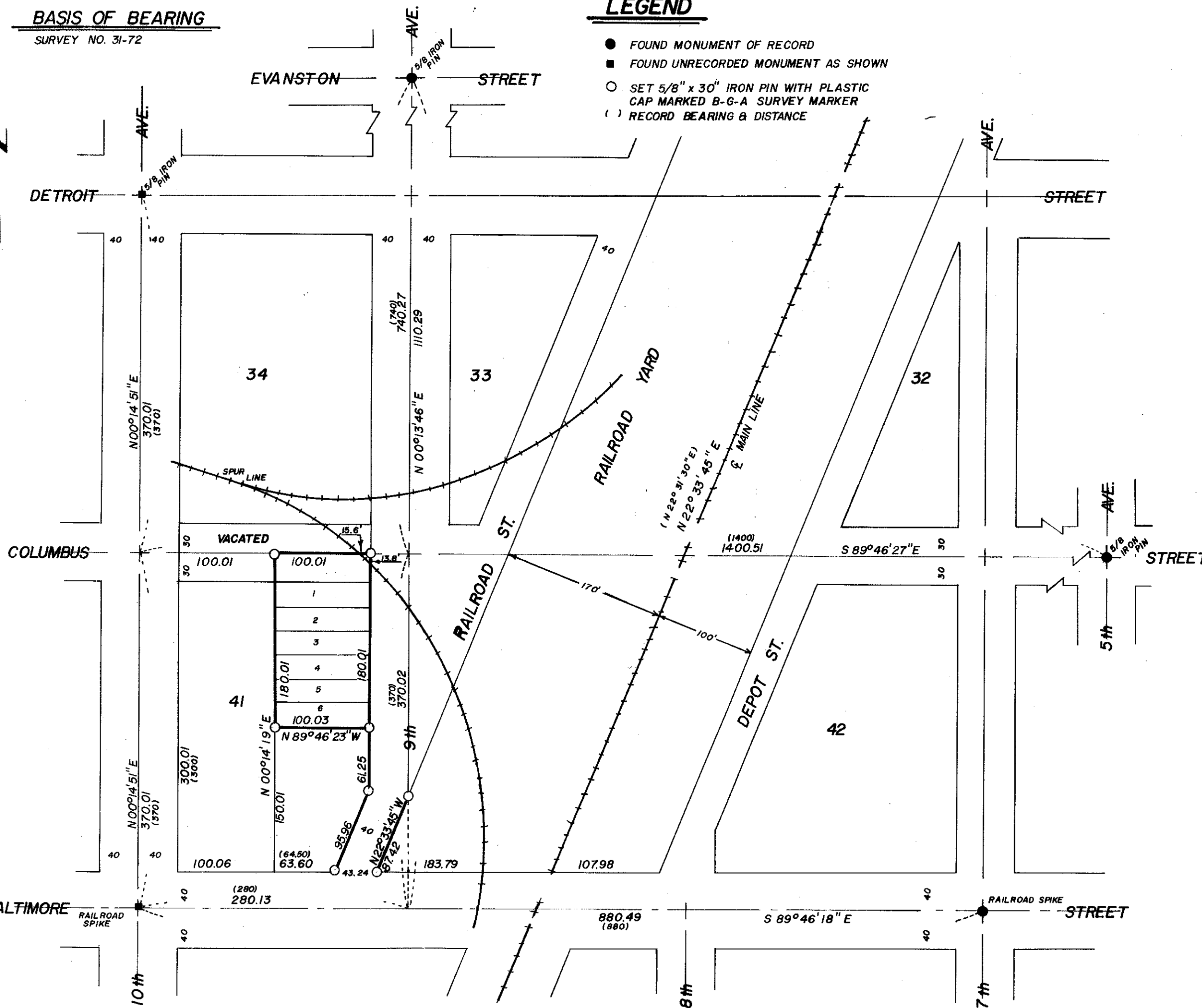
SURVEY NO. 31-72

LEGEND

- FOUND MONUMENT OF RECORD
- FOUND UNRECORDED MONUMENT AS SHOWN
- SET 5/8" x 30" IRON PIN WITH PLASTIC CAP MARKED B-G-A SURVEY MARKER
- () RECORD BEARING & DISTANCE

NARRATIVE

THIS SURVEY WAS MADE TO LOCATE LOTS IN BLOCK 41 OF HINDMAN'S ADDITION AND A PORTION OF RAILROAD STREET. THE ORIGINAL PLAT OF HINDMAN'S ADDITION WAS FILED IN MARCH OF 1890. THE ONLY MONUMENTS FOUND, WHICH ARE SHOWN ON THE ORIGINAL PLAT ARE THE N 1/4 CORNER AND THE CENTER 1/4 CORNER OF SECTION 15. SEVERAL RECORDED AND UNRECORDED PINS WERE FOUND, AS SHOWN. DUE TO THE GENERAL HARMONY OF THESE POINTS I ACCEPT THESE AS MARKING THE INTERSECTIONS OF THE RESPECTIVE STREETS. MATERIAL USED IN THIS RETRACEMENT IS AS FOLLOWS; THE ORIGINAL PLAT OF HINDMAN'S ADDITION; THE ORIGINAL PLAT OF NORTH ELGIN MAPS OF SURVEY NUMBERS; 73-73; 47-74; 22-75; 76-77; 35-78; 150-78; DEEDS; MF 66453



REGISTERED PROFESSIONAL LAND SURVEYOR
Dunne I. Griffith
 OREGON
 JULY 10, 1964
DUNNE I. GRIFFITH
 644

BAGETT, GRIFFITH & ASSOCIATES		
La Grande, Oregon		
Map of Survey		
LOTS 1-2-3-4-5-6 OF BLOCK 41		
HINDMAN'S ADDITION TO ELGIN		
UNION COUNTY, OREGON		
SURVEYED FOR	GEORGE A. WHITNEY	
SURVEYED BY	DIG	6-80
Scale: 1" = 100'	Drawn by: ARC	6-80