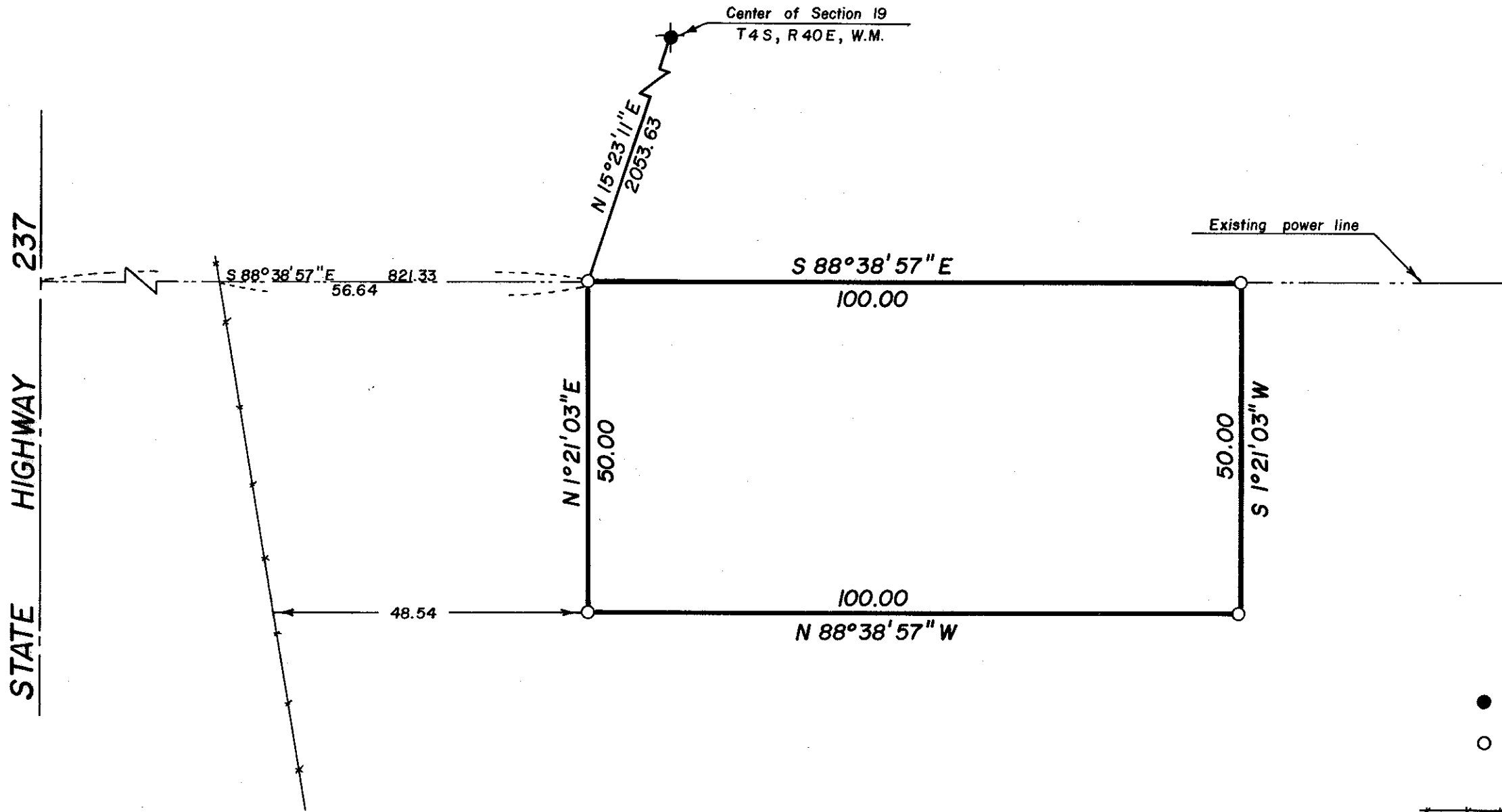


STATE HIGHWAY 237



Center of Section 19  
T4S, R40E, W.M.

**BASIS OF BEARING**

SURVEY NO. 42-77



**REFERENCE MATERIAL**

SURVEY NO. 42-77  
SURVEY NO. 66-79

**LEGEND**

- FOUND MONUMENT OF RECORD
- SET 5/8" x 30" IRON PIN WITH PLASTIC CAP MARKED B-G-A SURVEY MARKER
- EXISTING FENCELINE
- EXISTING POWER LINE
- CENTERLINE

**NARRATIVE**

THIS SURVEY WAS ORDERED BY CABLEVISION TO ESTABLISH AN EASEMENT FOR A TELEVISION SIGNAL RECEPTOR DISH FOR THE UNION AREA. THE MONUMENTS SHOWN DEFINE AN EASEMENT ONLY. NO TRANSFER OF PROPERTY IS INTENDED. NO UNUSUAL CONDITIONS WERE FOUND.

**REGISTERED PROFESSIONAL LAND SURVEYOR**  
*Gregory T. Blackman*  
**OREGON**  
JULY 13, 1973  
**GREGORY T. BLACKMAN**  
991

<b>BAGETT, GRIFFITH &amp; ASSOCIATES</b> La Grande, Oregon		
Map of Survey EASEMENT IN THE SE 1/4 OF THE SW 1/4 OF SECTION 19, T4S, R40E, W.M. UNION UNION COUNTY, OREGON		
SURVEYED FOR	CABLEVISION	
SURVEYED BY	GTB	4/80
Scale: 1" = 20'	Drawn by: RGR	4/80