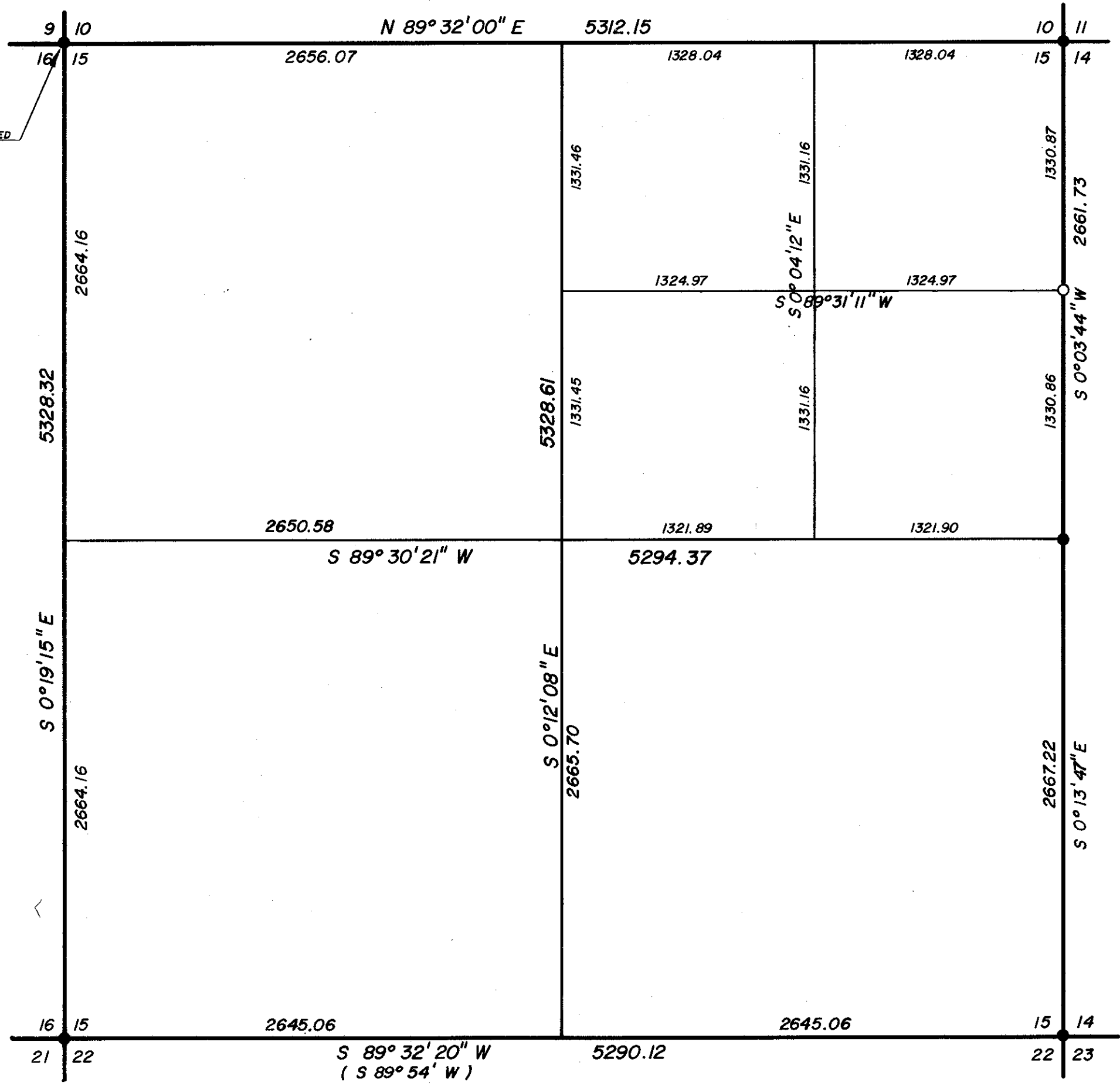


POSITION DETERMINED
BY STATE HIGHWAY
TIES



BASIS OF BEARING

SURVEY NO. 40-79

REFERENCE MATERIAL

SURVEY NO. 1-75
 SURVEY NO. 16-73
 SURVEY NO. 40-79

LEGEND

- FOUND MONUMENT OF RECORD
- SET 5/8" x 30" IRON PIN WITH PLASTIC CAP MARKED B-GA SURVEY MARKER
- () GLO BEARING

REGISTERED
 PROFESSIONAL
 LAND SURVEYOR

Gregory T. Blackman

OREGON
 JULY 13, 1973
 GREGORY T. BLACKMAN
 991

BAGETT, GRIFFITH & ASSOCIATES

La Grande, Oregon

Map of Survey

BREAKDOWN OF
 SECTION 15

T3 S, R40 E, W.M.

COVE

UNION COUNTY, OREGON

SURVEYED FOR	STAN ROBINSON	
SURVEYED BY	GTB	1/80
Scale: 1" = 600'	Drawn by: RGR	1/80