

BASIS OF BEARING

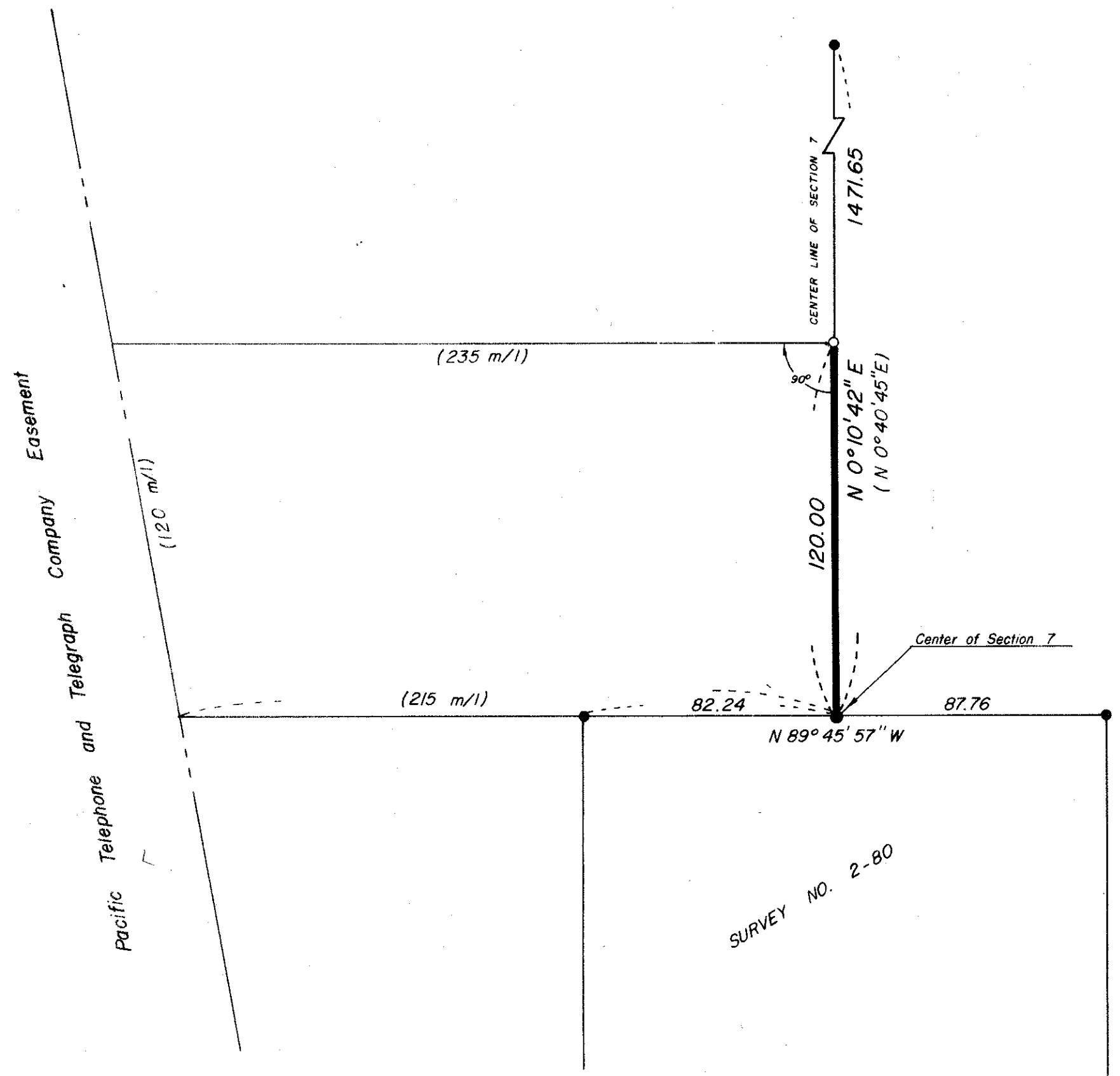
FORWARD BEARING AS PUBLISHED BY U.S.C. & G.S.
FROM Δ COLLEGE TO Δ VALLEY

REFERENCE MATERIAL

1922 REMONUMENTATION OF LA GRANDE
SURVEY NO. 75-79
SURVEY NO. 2-80
DEED MICROFILM NUMBER 27558

LEGEND

- FOUND MONUMENT OF RECORD
- SET 5/8" x 30" IRON PIN WITH PLASTIC CAP MARKED B-G-A SURVEY MARKER
- () RECORD DISTANCE AND BEARING
- EASEMENT LINE



REGISTERED
PROFESSIONAL
LAND SURVEYOR

OREGON
JULY 13 1973
GREGORY T. BLACKMAN
991

SURVEY NO. 2-80

| | | |
|---|---------------|------|
| BAGETT, GRIFFITH & ASSOCIATES La Grande, Oregon | | |
| Map of Survey THE EAST LINE OF A PARCEL IN THE SE 1/4 OF THE NW 1/4 OF SECTION 7, T3S, R38E, W.M. LA GRANDE UNION COUNTY, OREGON | | |
| SURVEYED FOR | EARL MILLER | |
| SURVEYED BY | GTB | 1/80 |
| Scale: 1" = 40' | Drawn by: RGR | 1/80 |