

**Preliminary Copy
ONLY.**
Subject to Revisions

This map is filed as temporary information only until the survey can be completed, in the spring of 1980. This map to be removed when completed map is filed.

Duane Griffith

BASIS OF BEARING

SOLAR OBSERVATION AT A POINT 1200± FEET NORTH OF THE NORTHWEST CORNER OF SECTION 36

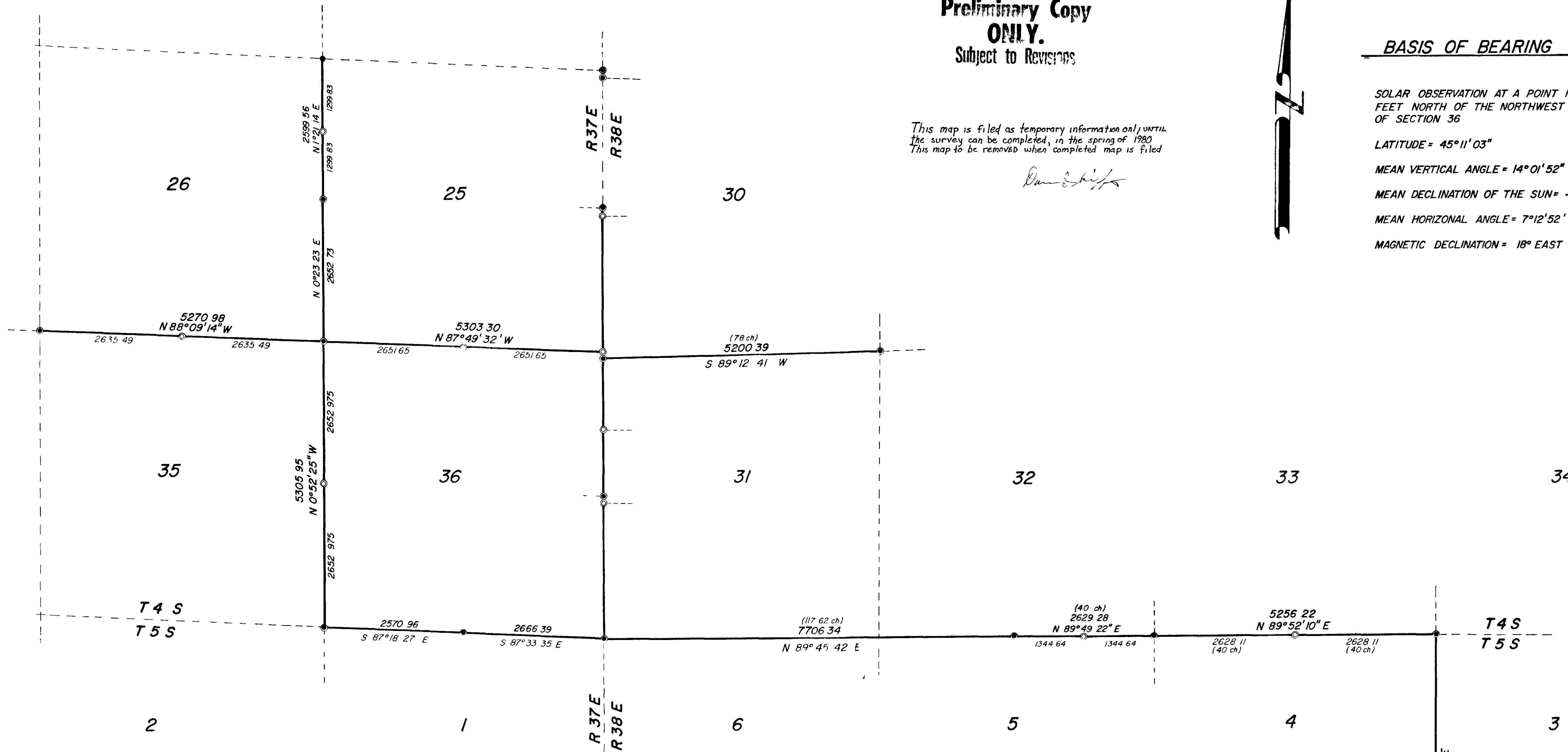
LATITUDE = 45° 11' 03"

MEAN VERTICAL ANGLE = 14° 01' 52"

MEAN DECLINATION OF THE SUN = -4° 16' 23"

MEAN HORIZONTAL ANGLE = 7° 12' 52"

MAGNETIC DECLINATION = 18° EAST



SURVEYOR'S STATEMENT

I DUANE I GRIFFITH REGISTERED LAND SURVEYOR IN THE STATE OF OREGON HEREBY CERTIFY THAT THIS PLAT AND THE NOTES HEREON OR ATTACHED ARE A CORRECT REPRESENTATION OF THE SURVEY I MADE DURING OCTOBER AND NOVEMBER 1979 FOR THE U S FOREST SERVICE IN ACCORDANCE WITH THE STATUTES OF THE STATE OF OREGON AND WITH THE ARTICLE OF MY CONTRACT

DUANE I GRIFFITH OPLS 644

**Preliminary Copy
ONLY.**
Subject to Revisions

NOTE
For monumentation records see monumentation sheets filed separately

LEGEND

- FOUND G.L.O. CORNER REMONUMENTED IN 1969 WITH BRASS CAP
- ⊙ FOUND G.L.O. CORNER EVIDENCE SET 2 1/2 x 30 IRON PIPE WITH BRASS CAP
- ⊙ SET 2 1/2 x 30 IRON PIPE WITH BRASS CAP AT A PROPORTIONATE DISTANCE
- () RECORD DISTANCE AND BEARING

**Preliminary Copy
ONLY.**
Subject to Revisions

REGISTERED
PROFESSIONAL
LAND SURVEYOR

DUANE I GRIFFITH
644

BAGETT GRIFFITH & ASSOCIATES La Grande Oregon Map Survey		
SURVEY IN TOWNSHIPS 4 AND 5 SOUTH AND N RANGE 37 AND 38 EAST WILLAMETTE MERIDIAN UNION COUNTY OREGON		
SURVEYED FOR	U S FOREST SERVICE	
SURVEYED BY	DIG	10B/11/79
Scale 1/1000	Drawn by RGR	12/79