

LEGEND

- FOUND ORIGINAL CORNER EVIDENCE AND SET MONUMENT AS DESCRIBED ON U.S.F.S. FORM R6-7100-57.
- SET MONUMENT AS DESCRIBED ON U.S.F.S. FORM R6-7100-57 BY SURVEY.
- ( ) RECORD DATA FROM ORIGINAL SURVEY.
- [ ] METERS
- ⑤ SECTION NUMBERS

BASIS OF BEARING

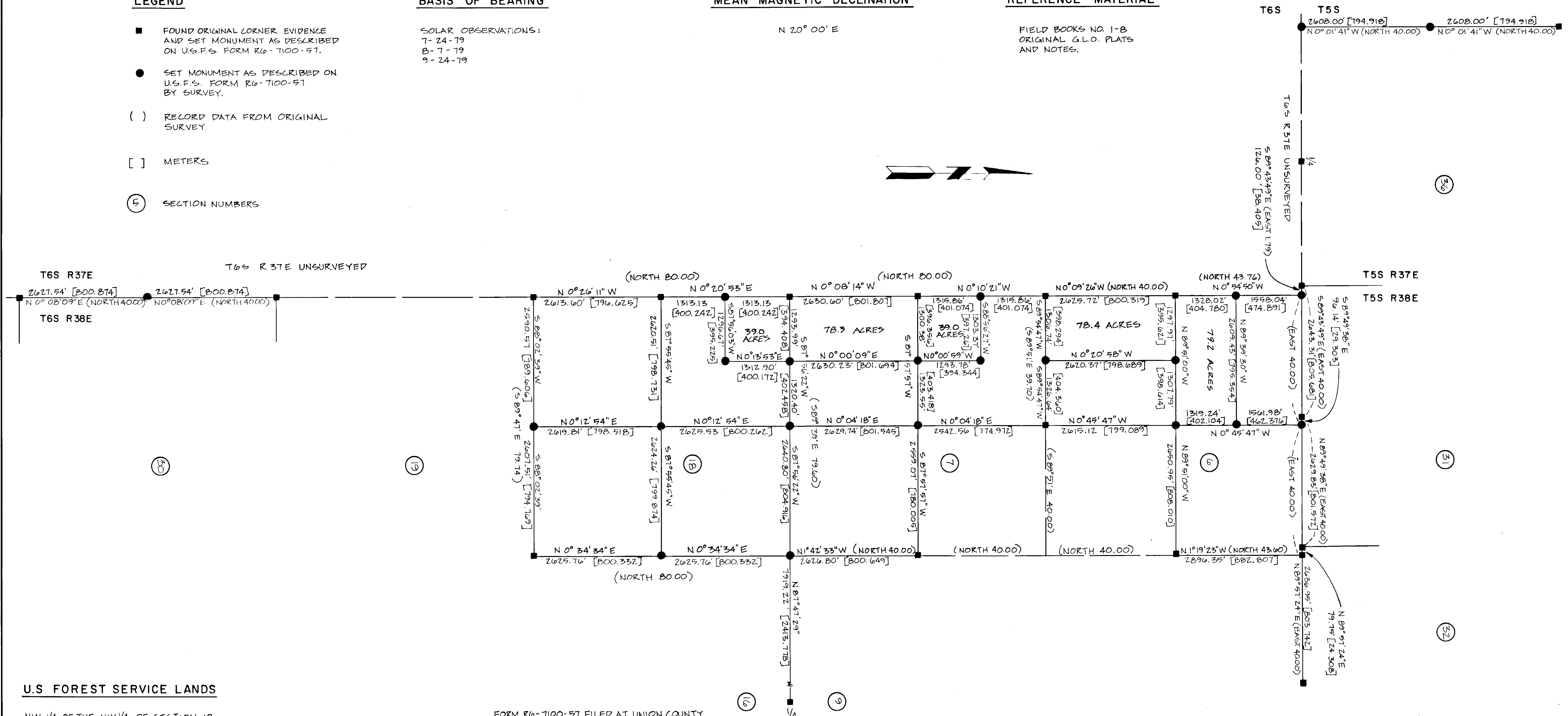
SOLAR OBSERVATIONS:  
 7-24-79  
 8-7-79  
 9-24-79

MEAN MAGNETIC DECLINATION

N 20° 00' E

REFERENCE MATERIAL

FIELD BOOKS NO. 1-B  
 ORIGINAL G.L.O. PLATS  
 AND NOTES.



U.S. FOREST SERVICE LANDS

NW 1/4 OF THE NW 1/4 OF SECTION 18  
 SW 1/4 OF THE NW 1/4, W 1/2 OF THE SW 1/4 OF SECTION 7  
 S 1/2 OF THE NW 1/4, W 1/2 OF THE SW 1/4 OF SECTION 6

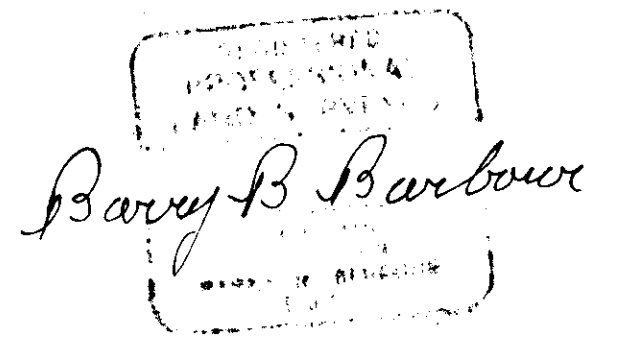
FORM R6-7100-57 FILED AT UNION COUNTY SURVEYOR'S FOR THE STANDARD INDEX FILE NUMBER: T5S, R37E, V-21, X-21, Z-21, Z-23 AND Z-25. T5S, R38E, Z-3, Z-5, Z-7, AND Z-9. T6S, R38E, A-1, A-3, A-5, B-1, B-3, C-1, C-2, C-3, C-5, E-1, E-2, E-3, F-1, F-2, G-1, G-2, G-3, G-5, J-1, J-2, J-3, J-5, J-11, K-1 AND L-5.

FORM R6-7100-57 FILED AT BAKER COUNTY SURVEYOR'S FOR THE STANDARD INDEX FILE NUMBER, T6S, R38E, K-2, L-1, L-3, N-1, N-3, N-5, P-1, R-1, T-1, V-1 AND X-1.

I, BARRY B. BARBOUR, a registered land surveyor in the State of Oregon, hereby certify that this plat and the notes hereon, or attached, are a correct representation of a survey I performed during July — October, 1979, for the U.S. Forest Service, in accordance with the Statutes of the State of Oregon and with the Articles of the Contract.

*Barry B. Barbour*

Barry B. Barbour  
 Registered Land Surveyor  
 Oregon License 1051



MAP OF SURVEY	
SECTIONS 18, 7, 6 T6S R38E	
UNION & BAKER COUNTIES, OREGON	
FOR: U.S. FOREST SERVICE	
SCALE	SHEET NO.
1" = 1000'	BARRY B. BARBOUR LAND SURVEYOR
DATE	
OCT, 1979	1/1