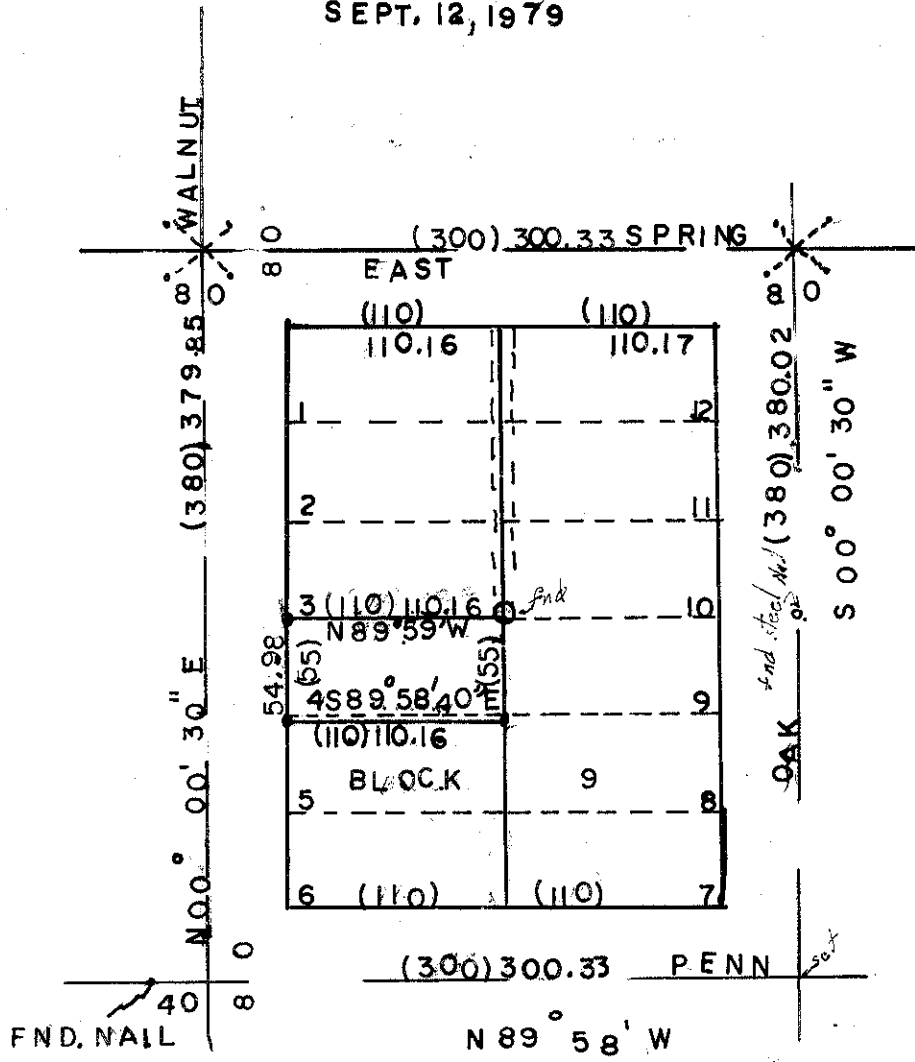


TONY PUTIGNANO
 653 12 TH
 LA GRANDE, OREGON
 SEPT. 12, 1979



LEGEND

- set 5/8" rebar on corner
- corner found
- () data of record
- ✱ lead plugs found in curb

BLOCK 9 ROMIG'S ADDITION
 TO LA GRANDE, OREGON
 basis of bearing;
 ↗ Spring Street is East

PROFESSIONAL
 LAND SURVEYOR
James G. Youll
 OREGON
 MAY 4, 1980
 JAMES G. YOULL
 151

83-79