

**NOTES:**

Bearings are based on solar observation, July 13, 1979, SEE Book 1, pages 47-54, SEE Traverse Detail Sheet 2 of 2. All bearings and distances are true

All field notes for traverses for Section 36 are in Book 1. Notes used to set Brass Caps are in Book 1. All accessory ties for corners set and remonumented in Section 36 are described in Certified Record of Land Monumentation.

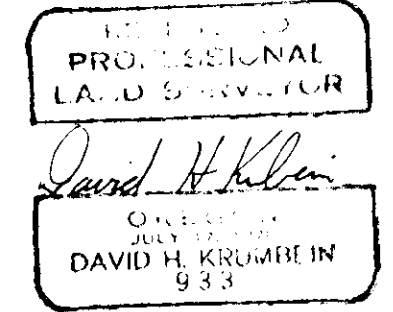
Computations for all corners set are based on Manual of Surveying Instruction 1973, Chapter 5, SEE Book 1, page 75 for computations done

**LEGAL DESCRIPTION**

U.S. Forest Service ownership surrounds Section 36, Township 4 North, Range 38 East, Willamette Meridian.

I, David H. Krumbein, a registered land surveyor (Engineer) in the State of Oregon, hereby certify that this plat and the notes hereon, or attached are a correct representation of a survey I performed during June - July 1979, for the U.S. Forest Service in accordance with the statutes of the State of Oregon and with the Articles of my contract.

David H. Krumbein (S) David H. Krumbein  
Registered Land Surveyor  
Oregon License No. 933

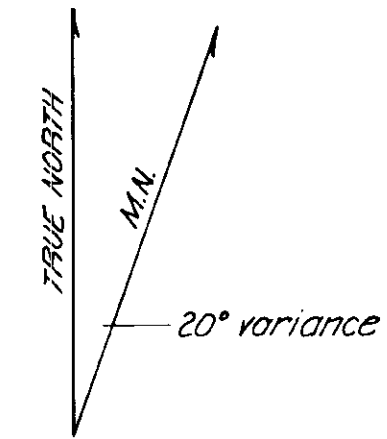
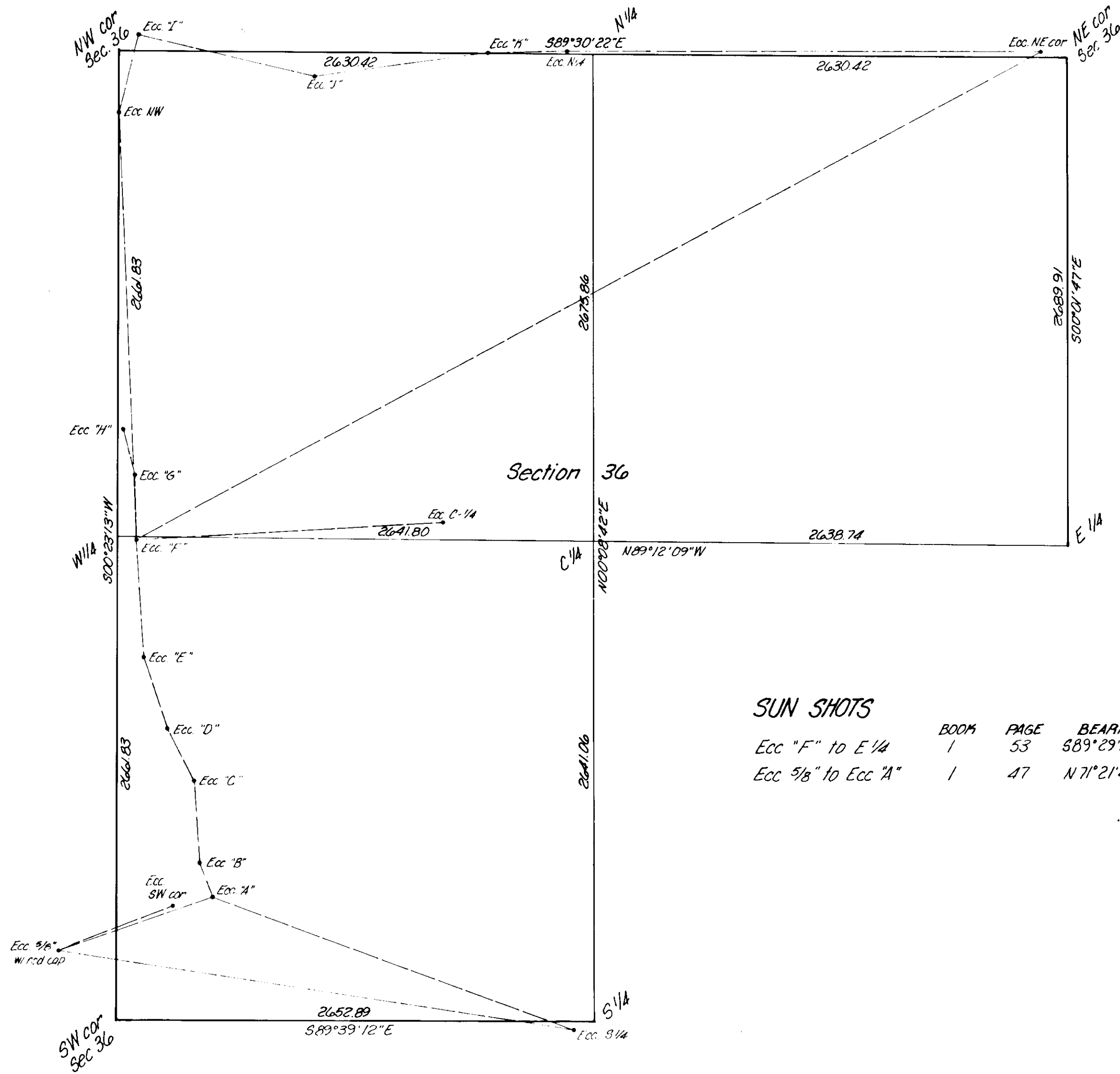


Sheet 1 of 2

- denotes U.S. Forest Service Boundary
- denotes Brass Cap set
- ( ) denotes G.L.D. record bearings & distances

<b>KRUMBEIN ENGINEERING CO.</b> ENGINEERS - SURVEYORS - PLANNERS 221 S. Main, Pendleton, Oregon	SCALE 1" = 500'
	DATE July 31, 1979
Survey for <b>U.S. FOREST SERVICE</b> Section 36, T4N, R38E, W.M.	DRN BY M CKD BY J.H.B. DRNG. NO. 79-51C

71-79



**SUN SHOTS**

	BOOM	PAGE	BEARING	BEARING BY SOLAR OBSERVATION
Ecc "F" to E 1/4	1	53	S89°29'36"E	S89°29'36"E
Ecc 5/8" to Ecc "A"	1	47	N71°21'49"E	N71°21'54"E

Sheet 2 of 2

<b>K</b>	<b>KRUMBEIN ENGINEERING CO</b> ENGINEERS - SURVEYORS - PLANNERS 221 S. Main, Pendleton, Oregon	SCALE 1" = 500'
		DATE July 31, 1979
Survey for <b>U.S. FOREST SERVICE</b>		DRN BY MI
Traverse Detail, Section 36, T4N, R38E, W1M		CKD BY JHB
		DRNG NO. 79-51C

62-17