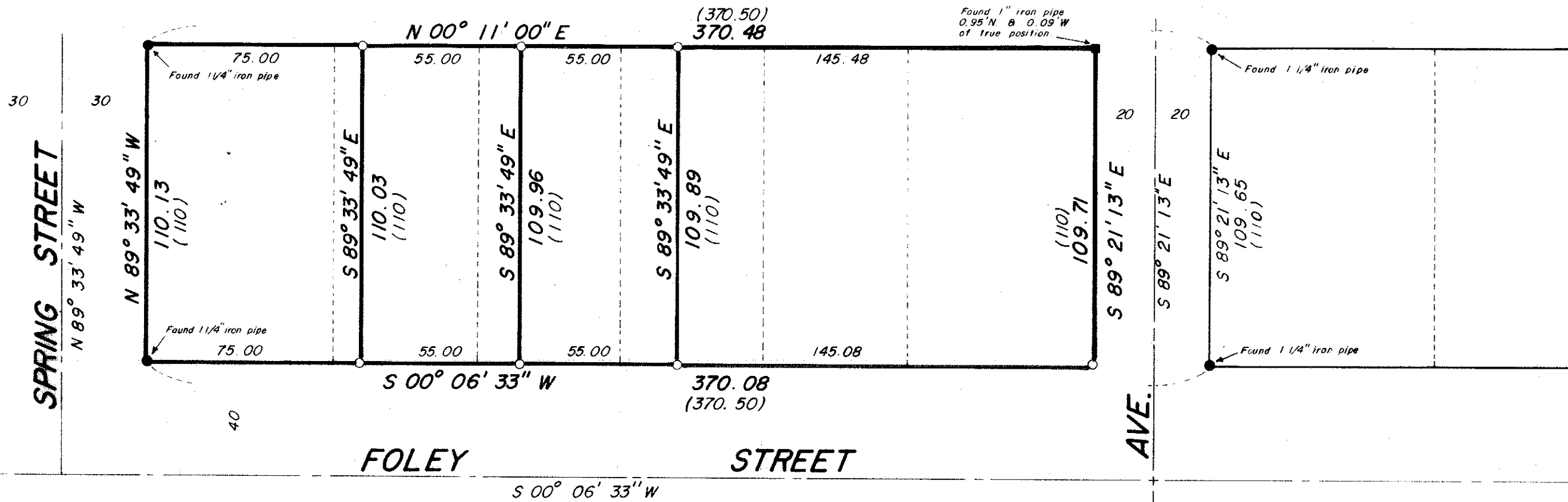




BASIS OF BEARING

FORWARD BEARING AS PUBLISHED BY U.S.C. & G.S. FROM Δ COLLEGE TO Δ VALLEY



LEGEND

- FOUND MONUMENT OF RECORD
- UNRECORDED MONUMENT
- SET 5/8" x 30" IRON PIN
- ORIGINAL SUBDIVISION LINES
- () RECORD DISTANCE

REFERENCE MATERIAL

1922 CITY OF LA GRANDE REMONUMENTATION MAP
 PLAT OF FOLEY ADDITION
 SURVEY NO. 90-78
 SURVEY NO. 6-79
 SURVEY NO. 54-79

**REGISTERED
 PROFESSIONAL
 LAND SURVEYOR**

Gregory T. Blackman

OREGON
JULY 13 1973
GREGORY T. BLACKMAN
 991

BAGETT, GRIFFITH & ASSOCIATES

La Grande, Oregon

Map of Survey

BLOCK 4 FOLEY'S ADDN.

LA GRANDE

UNION COUNTY, OREGON

SURVEYED FOR	VICTOR COALWELL	
SURVEYED BY	GTB	7/79
Scale: 1" = 40'	Drawn by: DDS	7/79