

BASIS OF BEARING

FORWARD BEARING AS PUBLISHED BY U.S.C. & G.S.
FROM Δ COLLEGE TO Δ VALLEY



REFERENCE MATERIAL

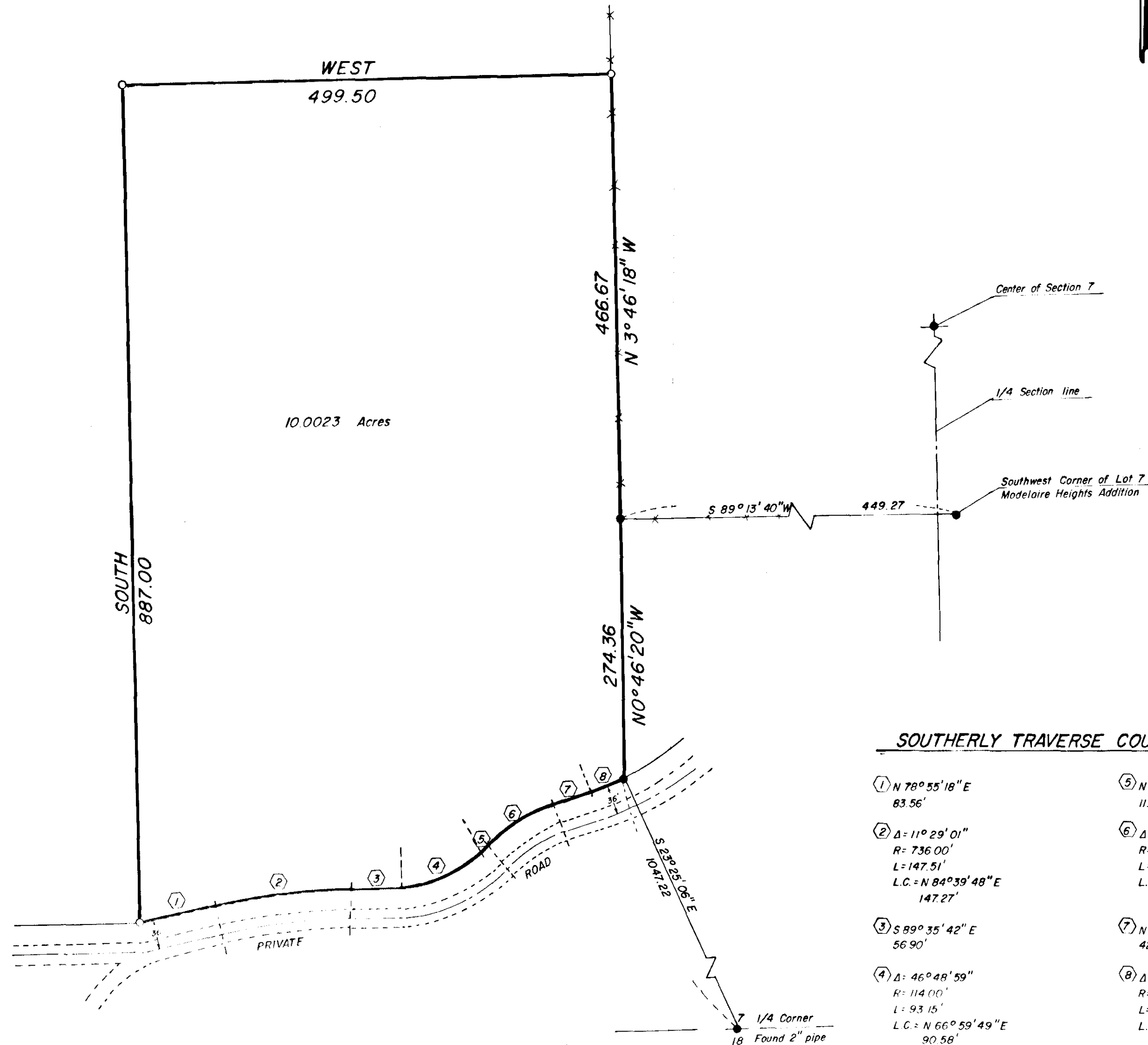
1922 REMONUMENTATION OF LA GRANDE
SURVEY NO. 32-79

LEGEND

- FOUND MONUMENT OF RECORD
- SET 5/8" x 30" IRON PIN WITH PLASTIC CAP MARKED B-G-A SURVEY MARKER
- EXISTING FENCELINE
- CENTERLINE
- TRAVELED PORTION OF ROAD

SOUTHERLY TRAVERSE COURSES

- | | |
|--|--|
| ① N 78°55'18" E
83.56' | ⑤ N 43°35'20" E
11.63' |
| ② Δ = 11°29'01"
R = 736.00'
L = 147.51'
L.C. = N 84°39'48" E
147.27' | ⑥ Δ = 30°37'20"
R = 186.00'
L = 99.41'
L.C. = N 58°54'00" E
98.23' |
| ③ S 89°35'42" E
56.90' | ⑦ N 74°12'40" E
42.63' |
| ④ Δ = 46°48'59"
R = 114.00'
L = 93.15'
L.C. = N 66°59'49" E
90.58' | ⑧ Δ = 8°07'22"
R = 239.00'
L = 33.88'
L.C. = N 70°08'59" E
33.85' |



REGISTERED
PROFESSIONAL
LAND SURVEYOR

OREGON
GREGORY I. BLACKMAN
991

BAGETT, GRIFFITH & ASSOCIATES
Le Grande, Oregon

PARCEL IN THE
SW 1/4 OF SECTION 7,
T3S, R36E, W.M.
LA GRANDE
UNION COUNTY, OREGON

SURVEYED FOR	EARL MILLER	
SURVEYED BY	GTB	8/79
Scale: 1" = 100'	Drawn by: RGR	8/79

60-79