



BASIS OF BEARING

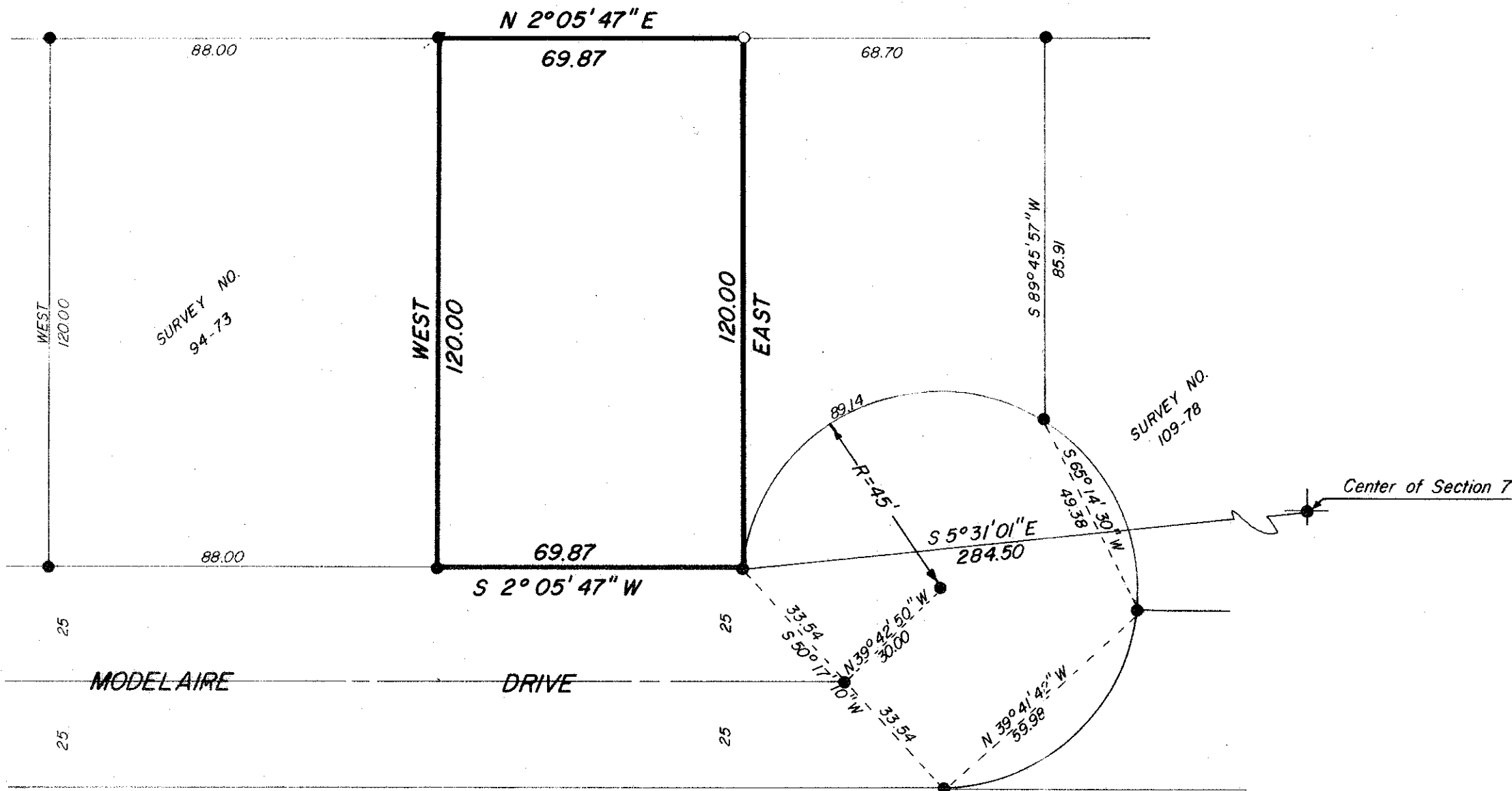
FORWARD BEARING AS PUBLISHED BY U.S.C. & G.S.
FROM \triangle COLLEGE TO \triangle VALLEY

REFERENCE MATERIAL

SURVEY NO. 94-73
SURVEY NO. 109-78

LEGEND

- FOUND MONUMENT OF RECORD
- SET 5/8" x 30" IRON PIN WITH PLASTIC CAP MARKED BGA SURVEY MARKER



REGISTERED
PROFESSIONAL
LAND SURVEYOR

Gregory T. Blackman

OREGON
JULY 13, 1973
GREGORY T. BLACKMAN
991

BAGETT, GRIFFITH & ASSOCIATES

La Grande, Oregon

Map of Survey
PARCEL IN THE SOUTH
HALF OF SECTION 7,
T3S, R38E, W.M.
LA GRANDE
UNION COUNTY, OREGON

SURVEYED FOR	EARL MILLER	
SURVEYED BY	GTB	8/79
Scale: 1" = 30'	Drawn by: RGR	8/79