

NOTE: This amended survey was filed to give a more accurate position of the Utility Easement.



BASIS OF BEARING

FORWARD BEARING AS PUBLISHED BY U.S.C. & G.S.
FROM Δ COLLEGE TO Δ VALLEY

REFERENCE MATERIAL

1922 REMONUMENTATION OF L.A. GRANDE
SURVEY NO. 67
SURVEY NO. 124 78
PLAT OF GRANDVIEW ADDITION

LEGEND

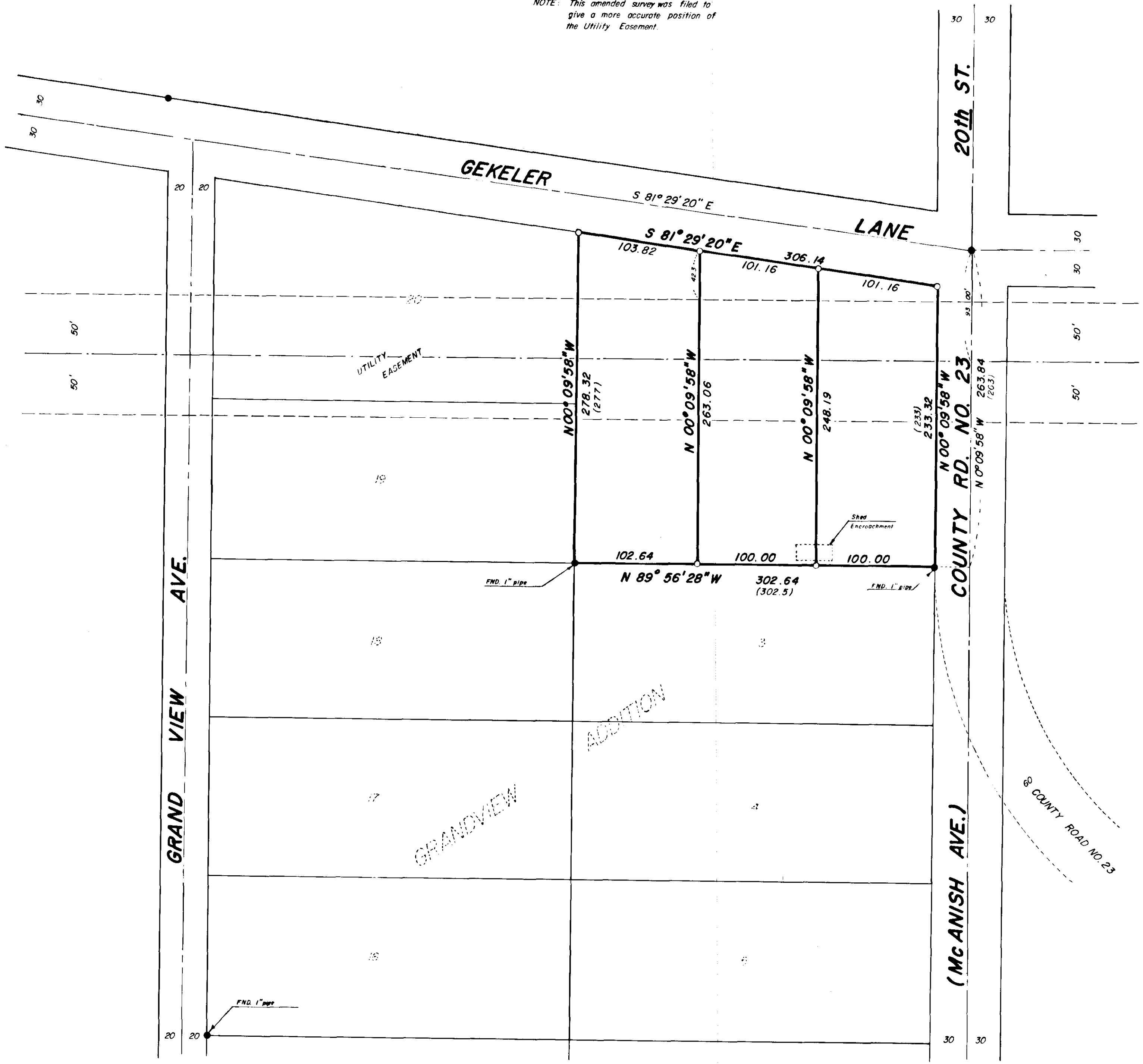
- FOUND MONUMENT OF RECORD
- SET 5/8" x 30" IRON PIN WITH PLASTIC CAP MARKED B-G-A SURVEY MARKER
- () RECORD DISTANCE AND BEARING
- UTILITY EASEMENT

REGISTERED
PROFESSIONAL
LAND SURVEYOR

OREGON
GREGORY T. BLACKMAN
991

AMENDED SURVEY OF SURVEY NO. 52-79

BAGETT, GRIFFITH & ASSOCIATES		
La Grande, Oregon		
Map of Survey		
LOTS 1 & 2		
GRANDVIEW ADDITION		
LA GRANDE		
UNION COUNTY, OREGON		
SURVEYED FOR	RICK CRAIGER	
SURVEYED BY	GTB	8/79
Scale: 1" = 60'	Drawn by: DDS	8/79



52-79A