



BASIS OF BEARING

FORWARD BEARING AS PUBLISHED BY U.S.C & G.S.
FROM Δ COLLEGE TO Δ VALLEY

REFERENCE MATERIAL

1922 REMONUMENTATION OF LA GRANDE
SURVEY NO. 67
SURVEY NO. 124-78
PLAT OF GRANDVIEW ADDITION

LEGEND

- FOUND MONUMENT OF RECORD
- SET 5/8" x 30" IRON PIN WITH PLASTIC CAP MARKED B-G-A SURVEY MARKER
- () RECORD DISTANCE AND BEARING
- UTILITY EASEMENT

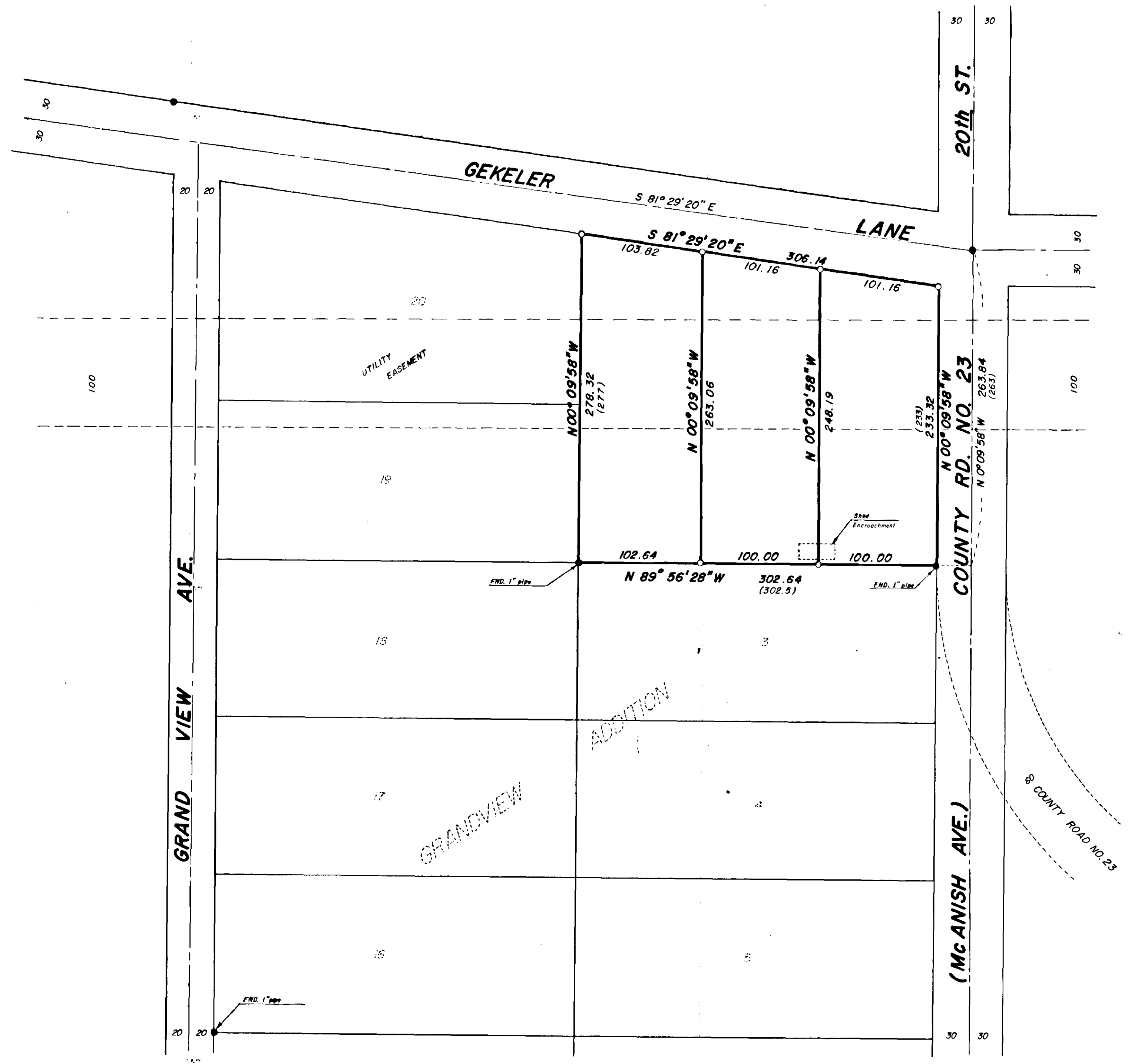
REGISTERED
PROFESSIONAL
LAND SURVEYOR

Gregory T. Blackman

OREGON
JULY 13, 1973
GREGORY T. BLACKMAN
991

BAGETT, GRIFFITH & ASSOCIATES		
La Grande, Oregon		
Map of Survey		
LOTS 1 & 2		
GRANDVIEW ADDITION		
LA GRANDE		
UNION COUNTY, OREGON		
SURVEYED FOR	RICK CRAIGER	
SURVEYED BY	GTB	7/79
Scale: 1" = 60'	Drawn by: DDS	7/79

61-25



GEKELER

LANE

20th ST.

GRANDVIEW AVE.

(McANISH AVE.)

COUNTY RD. NO. 23

8 COUNTY ROAD NO. 23

UTILITY EASEMENT

ADDITION

GRANDVIEW

Shed Encroachment

END. 1" pipe

END. 1" pipe

END. 1" pipe

S 81° 29' 20" E

S 81° 29' 20" E

103.82

101.16

306.14

101.16

N 00° 09' 58" W

278.32 (277)

N 00° 09' 58" W

263.06

N 00° 09' 58" W

248.19

N 00° 09' 58" W

233.32 (233)

N 0° 09' 58" W

263.84 (263)

N 89° 56' 28" W

102.64

100.00

100.00

302.64 (302.5)