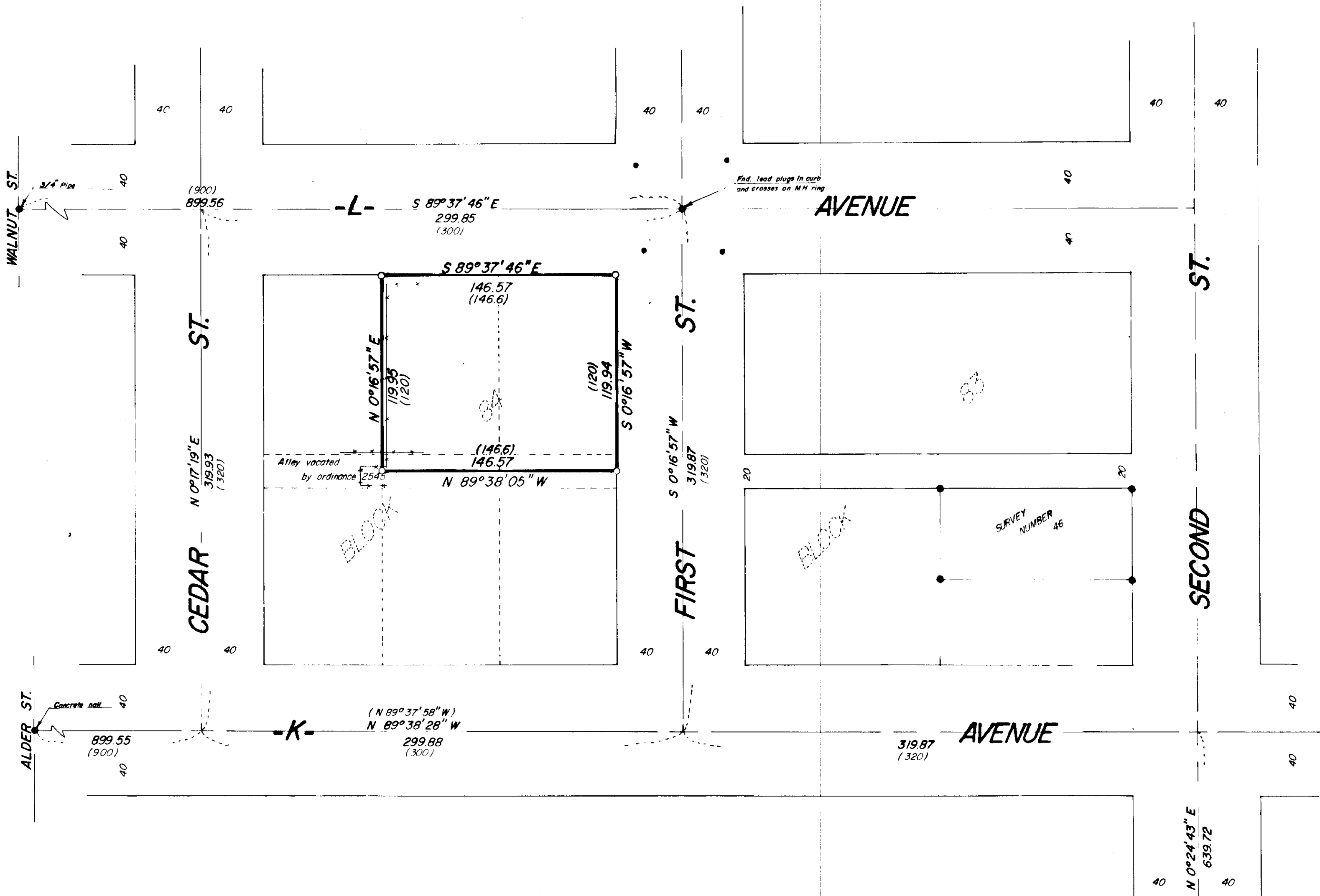


42-79



BASIS OF BEARING

FORWARD BEARING AS PUBLISHED BY U.S.C. & G.S. FROM (S) COLLEGE TO (S) VALLEY

REFERENCE MATERIAL

1922 REMONUMENTATION OF LA GRANDE
SURVEY NO. 46
SURVEY NO. 18-76
SURVEY NO. 20-76



LEGEND

- FOUND MONUMENT OF RECORD
- SET 5/8" x 30" IRON PIN WITH PLASTIC CAP MARKED B.G.A. SURVEY MARKER
- () RECORD DISTANCE OR BEARING
- EXISTING FENCELINE

REGISTERED PROFESSIONAL LAND SURVEYOR

Gregory T. Blackman

OREGON
GREGORY T. BLACKMAN
991

BAGETT, GRIFFITH & ASSOCIATES		
La Grande, Oregon		
Map of Survey LOTS 2 and 3 BLOCK 84 CHAPLIN'S ADDITION LA GRANDE UNION COUNTY, OREGON		
SURVEYED FOR	R.W. DONNELLY	
SURVEYED BY	GTB	5/79
Scale: 1"=50"	Drawn by: RGR	5/79

42-79