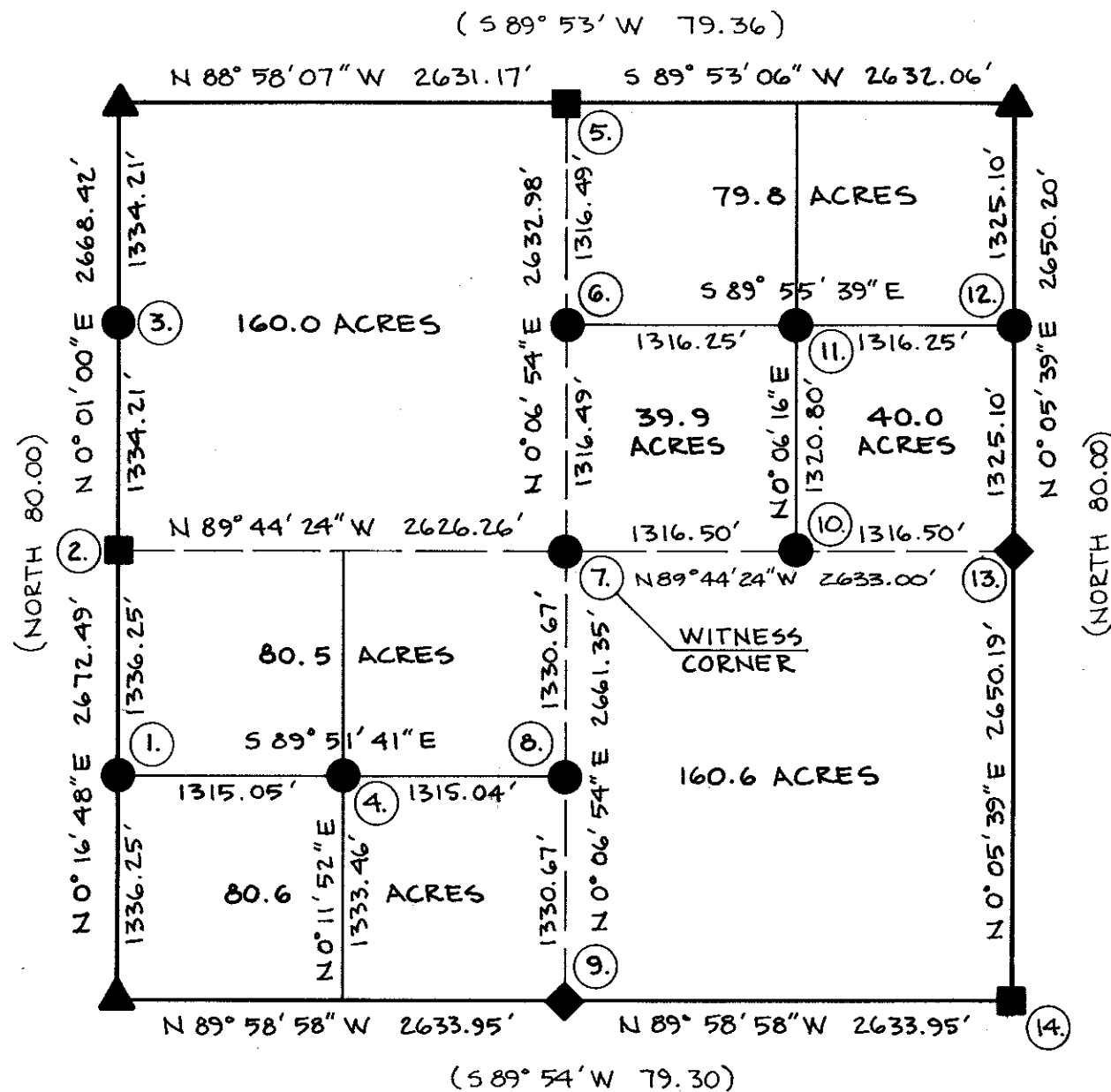


1. 1 1/4" X 30" Pipe & B.C.  
15" Pine S50°E, 64.8 ft.  
15" Pine S31°W, 35.5 ft.
2. 2 1/2" X 30" Pipe & B.C.  
24" Pine N43°W, 37.5 ft.  
20" Pine S58°E, 47.8 ft.
3. 1 1/4" X 30" Pipe & B.C.  
14" Tamarac N25°E, 17.5 ft.  
20" Pine N83°W, 5.3 ft.
4. 1 1/4" X 30" Pipe & B.C.  
10" Pine N09°E, 24.0 ft.  
10" Pine S83°E, 27.7 ft.
5. 1 1/4" X 30" Pipe & B.C.  
Found: 8" Fir S27°W, 37.7 ft.  
Found: 16" Pine N51°W, 47.2 ft.
6. 1 1/4" X 30" Pipe & B.C.  
22" Pine N54°W, 84.8 ft.  
22" Pine S40°W, 66.7 ft.
7. Witness Corner 26.0 ft. South  
1 1/4" X 30" Pipe & B.C.  
18" Fir N06°W, 49.8 ft.  
14" Tamarac N89°E, 12.8 ft.
8. 1 1/4" X 30" Pipe & B.C.  
18" Pine S34°E, 36.4 ft.  
15" Pine N71°W, 41.9 ft.
9. 2 1/2" X 30" Pipe & B.C.  
9" Pine S20°W, 23.8 ft.  
18" Pine N70°W, 154.7 ft.
10. 1 1/4" X 30" Pipe & B.C.  
15" Pine N45°E, 42.6 ft.  
10" Pine N49°W, 15.2 ft.
11. 1 1/4" X 30" Pipe & B.C.  
24" Pine N35°E, 93.9 ft.  
16" Pine N23°W, 124.8 ft.
12. 1 1/4" X 30" Pipe & B.C.  
16" Pine N47°E, 38.1 ft.  
22" Pine N65°W, 29.0 ft.
13. 2 1/2" X 30" Pipe & B.C.  
24" Fir N77°E, 41.9 ft.  
14" Fir S37°W, 51.0 ft.  
5/8" X 6" Rebar, N41°E, 13.2 ft.
14. 2 1/2" X 30" Pipe & B.C.  
15" Pine N25°E, 47.4 ft.  
12" Pine S38°E, 18.6 ft.  
12" Pine S46°W, 32.5 ft.  
10" Pine N41°W, 25.9 ft.



**LEGEND**

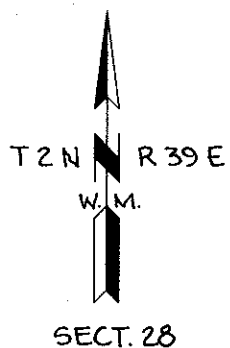
- ▲ FOUND RECENT MONUMENTS & NEW BEARING TREES
- CORNERS REMONUMENTED FROM ORIGINAL CORNER EVIDENCE
- ◆ CORNERS MONUMENTED FROM SURVEY
- CENTER 1/4 AND 1/16 CORNERS MONUMENTED BY SURVEY
- ( ) RECORD DATA FROM ORIGINAL SURVEY

**REFERENCE MATERIAL**

FIELD BOOKS NO. 1 & 2  
SURVEY 82-78  
CORNER MONUMENTATION RECORDS  
FILED AT UNION COUNTY SURVEYORS.

REGISTERED  
PROFESSIONAL  
LAND SURVEYOR

*Barry B. Barbour*  
OREGON  
OCT. 17, 1975  
BARRY B. BARBOUR  
1051



**BASIS OF BEARING**

SOLAR OBSERVATION APRIL 11, 1979

**MEAN MAGNETIC DECLINATION**

N 20° 00' E

DEPENDENT RESURVEY & SUB-DIVISION OF SECTION 28, T2N, R39E, W.M. UNION COUNTY, OREGON		
FOR: BOISE CASCADE CORP. & OTTO N. & ANNA L. COSNER		
SCALE: 1" = 1000'	BARRY B. BARBOUR LAND SURVEYOR	SHEET NO. 1/1
DATE: APR. 1979		

33-79