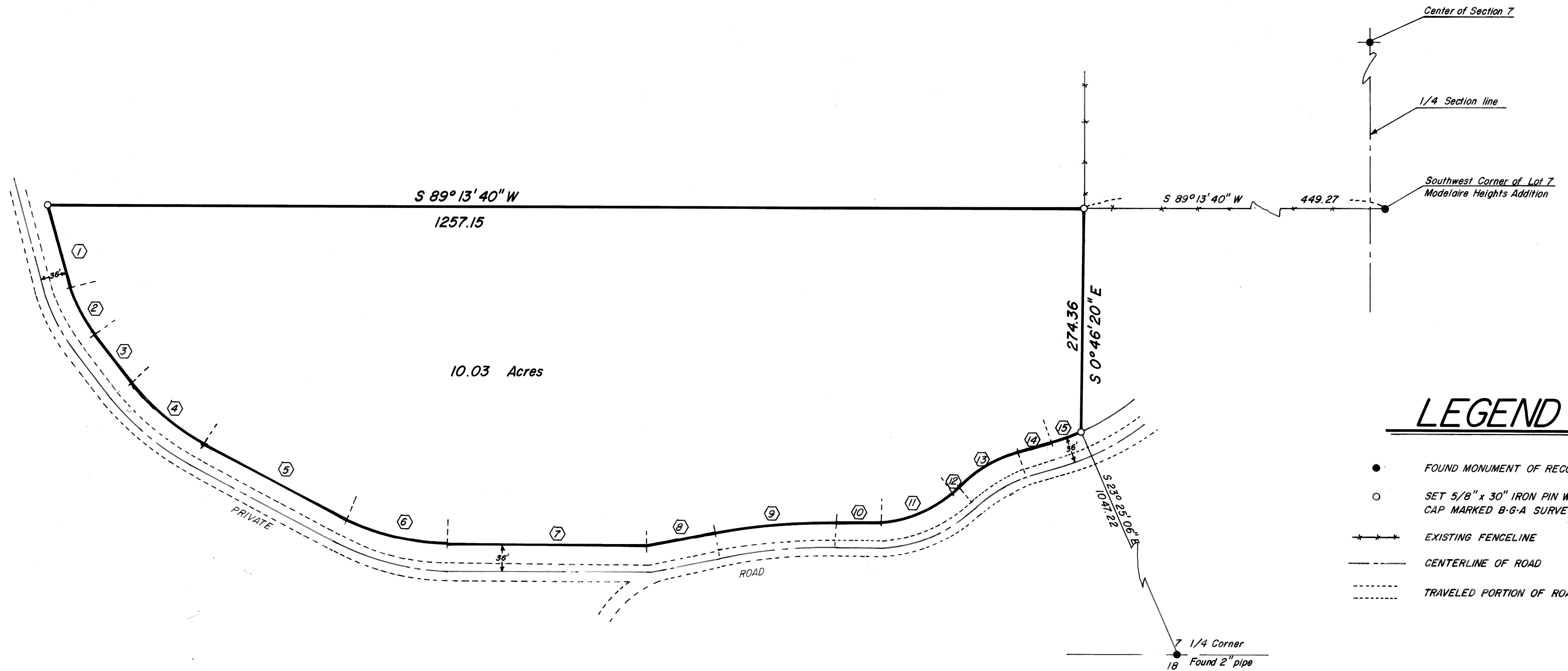


REFERENCE MATERIAL

1922 REMONUMENTATION OF LA GRANDE

BASIS OF BEARING

FORWARD BEARING AS PUBLISHED BY U.S.C. & G.S.
FROM Δ COLLEGE TO Δ VALLEY



LEGEND

- FOUND MONUMENT OF RECORD
- SET 5/8" x 30" IRON PIN WITH PLASTIC CAP MARKED B-G-A SURVEY MARKER
- +—+— EXISTING FENCELINE
- — — CENTERLINE OF ROAD
- - - - - TRAVELED PORTION OF ROAD

SOUTHERLY TRAVERSE COURSES

① N 15° 53' 18" W 101.01'	⑤ N 62° 40' 32" W 192.82'	⑨ Δ = 11° 29' 01" R = 736' L = 147.51'	⑬ Δ = 30° 37' 20" R = 186' L = 99.41'
② Δ = 21° 50' 53" R = 164' L = 62.54' L.C. = N 26° 48' 45" W 62.16'	⑥ Δ = 27° 34' 42" R = 264' L = 127.07' L.C. = N 76° 27' 54" W 125.85'	⑩ N 89° 35' 42" W 56.90'	⑭ S 74° 12' 40" W 42.63'
③ N 37° 44' 11" W 76.28'	⑦ S 89° 44' 46" W 241.98'	⑪ Δ = 46° 48' 59" R = 114' L = 93.15'	⑮ Δ = 8° 07' 22" R = 239' L = 33.88'
④ Δ = 24° 56' 22" R = 264' L = 114.91' L.C. = N 50° 12' 22" W 114.01'	⑧ S 78° 55' 18" W 83.56'	⑫ S 66° 59' 49" W 90.58'	L.C. = S 70° 08' 59" W 33.85'
		⑬ S 43° 35' 20" W 11.63'	

REGISTERED
PROFESSIONAL
LAND SURVEYOR

Gregory T. Blackman
OREGON
JULY 13, 1973
GREGORY T. BLACKMAN
991

BAGETT, GRIFFITH & ASSOCIATES
La Grande, Oregon

Map of Survey
PARCEL IN THE
SW 1/4 OF SECTION 7
T3S, R38E, W.M.
LA GRANDE
UNION COUNTY, OREGON

SURVEYED FOR	EARL MILLER	
SURVEYED BY	GTB	4/79
Scale: 1" = 100'	Drawn by: RGR	4/79