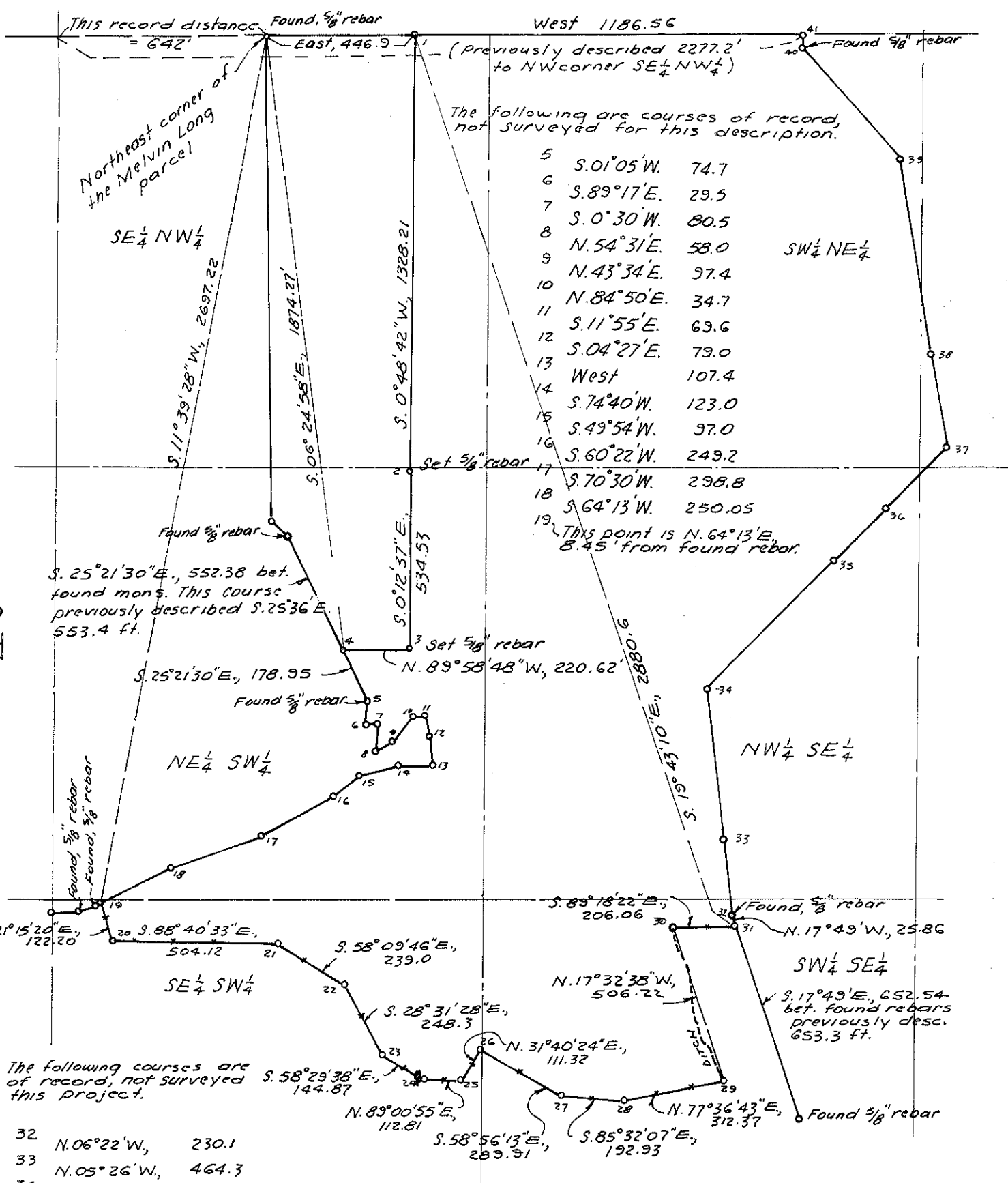


Meridian based on Sur. No. 7-68  
the North line SE 1/4 NW 1/4 bears East



The following are courses of record, not surveyed for this description.

- 5 S. 01° 05' W. 74.7
- 6 S. 89° 17' E. 29.5
- 7 S. 0° 30' W. 80.5
- 8 N. 54° 31' E. 58.0
- 9 N. 43° 34' E. 97.4
- 10 N. 84° 50' E. 34.7
- 11 S. 11° 55' E. 69.6
- 12 S. 04° 27' E. 79.0
- 13 West 107.4
- 14 S. 74° 40' W. 123.0
- 15 S. 49° 54' W. 97.0
- 16 S. 60° 22' W. 249.2
- 17 S. 70° 30' W. 298.8
- 18 S. 64° 13' W. 250.05
- 19 This point is N. 64° 13' E., 5.45' from found rebar.

The following courses are of record, not surveyed this project.

- 32 N. 06° 22' W., 230.1
- 33 N. 05° 26' W., 464.3
- 34 N. 44° 40' E., 550.2
- 35 N. 44° 54' E., 212.1
- 36 N. 45° 35' E., 258.5
- 37 N. 08° 01' W., 289
- 38 N. 09° 01' W., 620.2
- 39 N. 40° 16' W., 477.7
- 40 North 33.8
- 41

**MAP OF SURVEY**  
A PARCEL IN SEC. 23, T. 3 S., R. 40 E., W.M.  
FOR FRANK NIMS  
Nov. 13 - Dec. 12, 1978 Scale 1" = 400'

**REGISTERED PROFESSIONAL LAND SURVEYOR**

James D. Hanley  
**OREGON**  
SEPTEMBER 23, 1977  
JAMES D. HANLEY  
1206

8-79