

BASIS OF BEARING

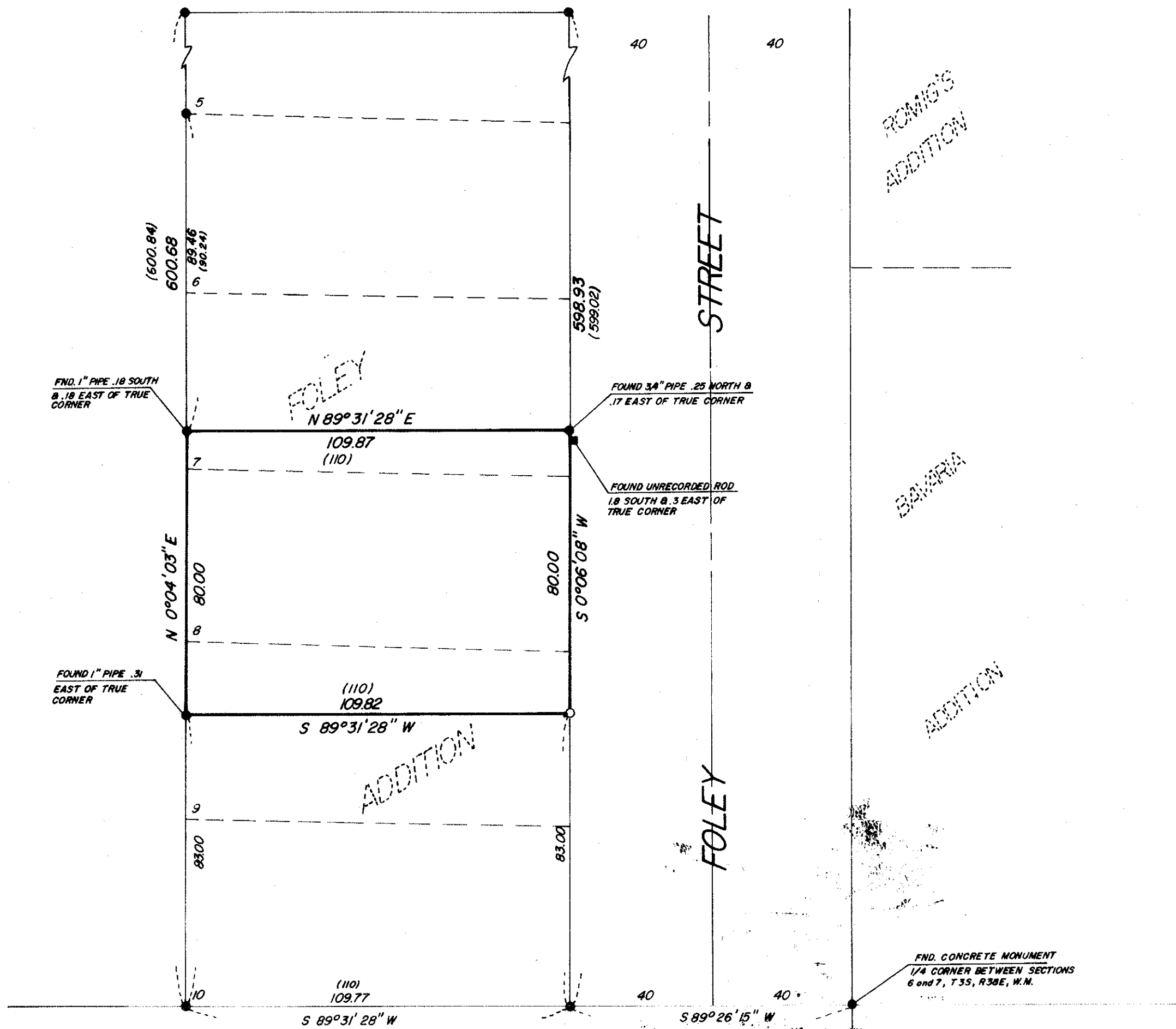
FORWARD BEARING AS PUBLISHED BY U.S.C. & G.S.
FROM Δ COLLEGE TO Δ VALLEY

REFERENCE MATERIAL

ORIGINAL PLAT OF FOLEY'S ADDITION
SURVEY NO. 90-78
SURVEY NO. 64
SURVEY NO. 65

LEGEND

- FOUND MONUMENT OF RECORD
- SET 5/8" x 30" IRON PIN WITH PLASTIC CAP MARKED B-G-A SURVEY MARKER
- () RECORD DISTANCE AND BEARING
- FOUND UNRECORDED MONUMENT



REGISTERED
PROFESSIONAL
LAND SURVEYOR

Gregory T. Blackman

OREGON
JULY 11 1973
GREGORY T. BLACKMAN
991

BAGETT, GRIFFITH & ASSOCIATES		
La Grande, Oregon		
Map of Survey		
LOT 8 & PORTIONS OF LOTS 7 & 9		
BLOCK 5		
FOLEY'S ADDITION		
LA GRANDE		
UNION COUNTY, OREGON		
SURVEYED FOR	GREGG WILLIAMSON	
SURVEYED BY	GTB	1/79
Scale: 1" = 30'	Drawn by: RGR	1/79