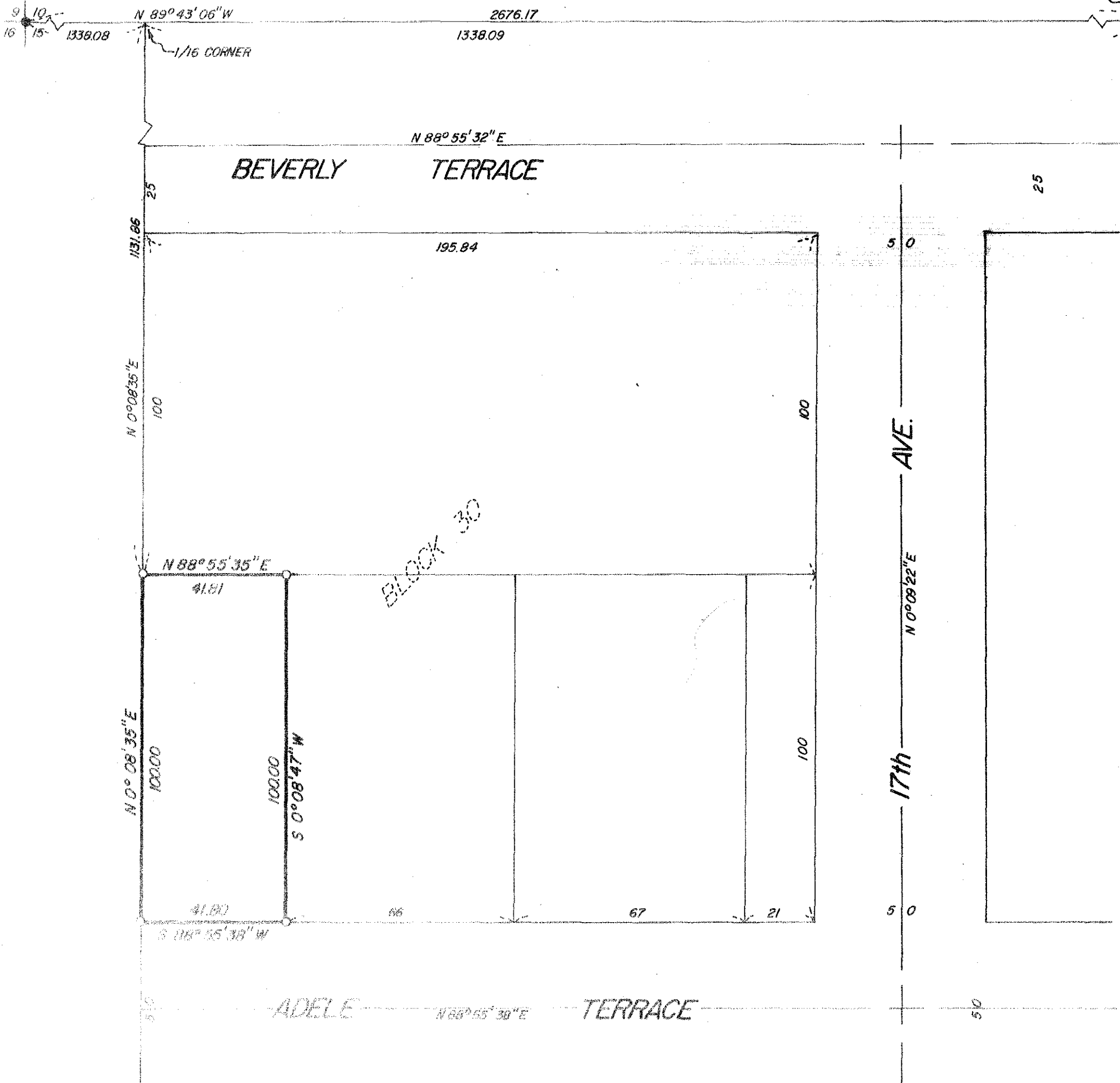


NORTH 1/4 CORNER SECTION 15



BASIS OF BEARING

SURVEY NO. 31-72

REFERENCE MATERIAL

SURVEY NO. 150-78

LEGEND

- FOUND MONUMENT OF RECORD
- SET 5/8" x 30" IRON PIN WITH PLASTIC CAP MARKED B-G-A SURVEY MARKER
- OF STREET

**REGISTERED
PROFESSIONAL
LAND SURVEYOR**

Duane I. Griffith

OREGON
JULY 10, 1964
DUANE I. GRIFFITH
644

BAGETT, GRIFFITH & ASSOCIATES		
La Grande, Oregon		
Map of Survey A PARCEL IN BLOCK 30 M.A. STEVENSON'S ADDITION ELGIN UNION COUNTY, OREGON		
SURVEYED FOR	SUSAN HUTSON	
SURVEYED BY	DIG	12/78
Scale: 1"=30'	Drawn by: RGR	12/78