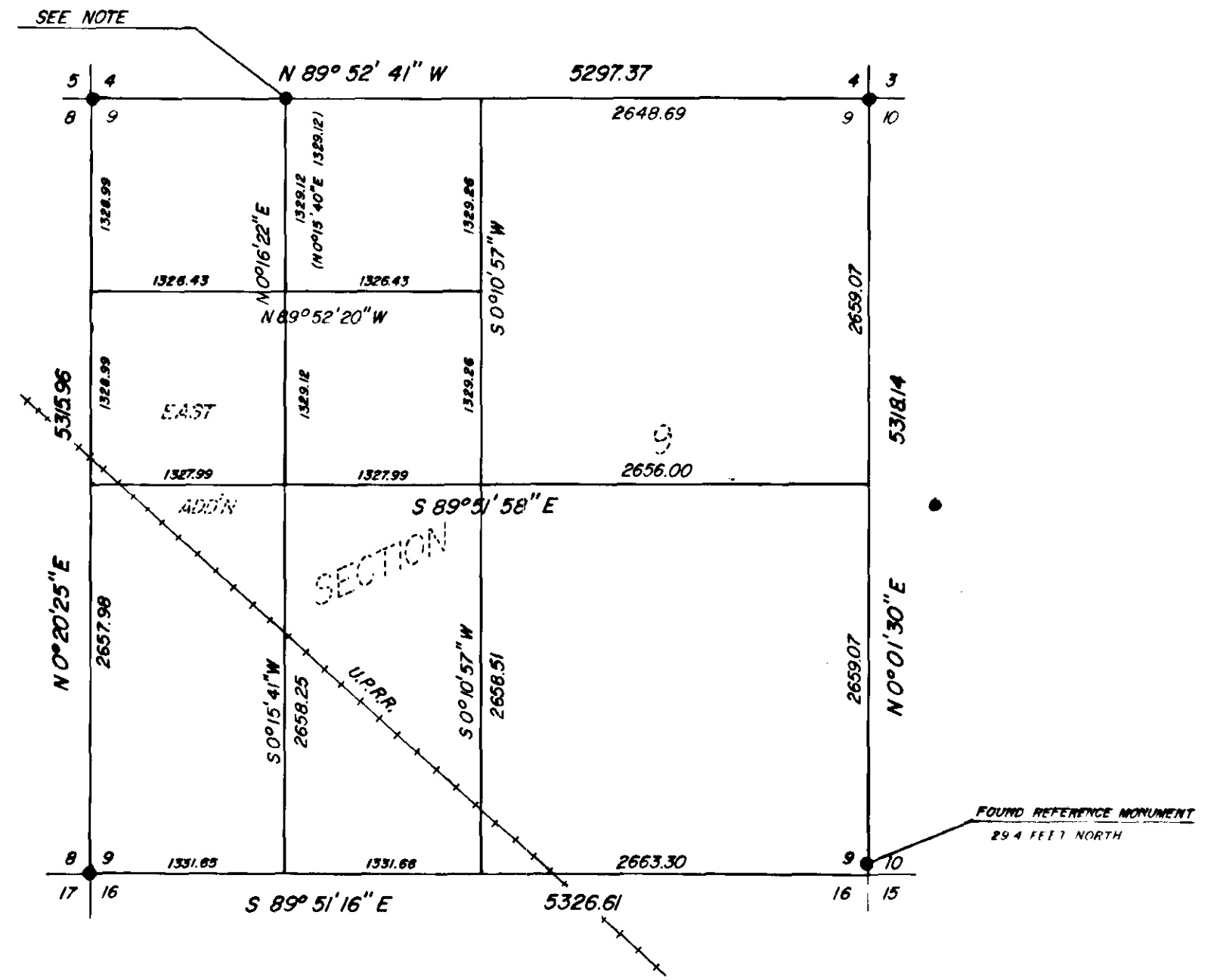
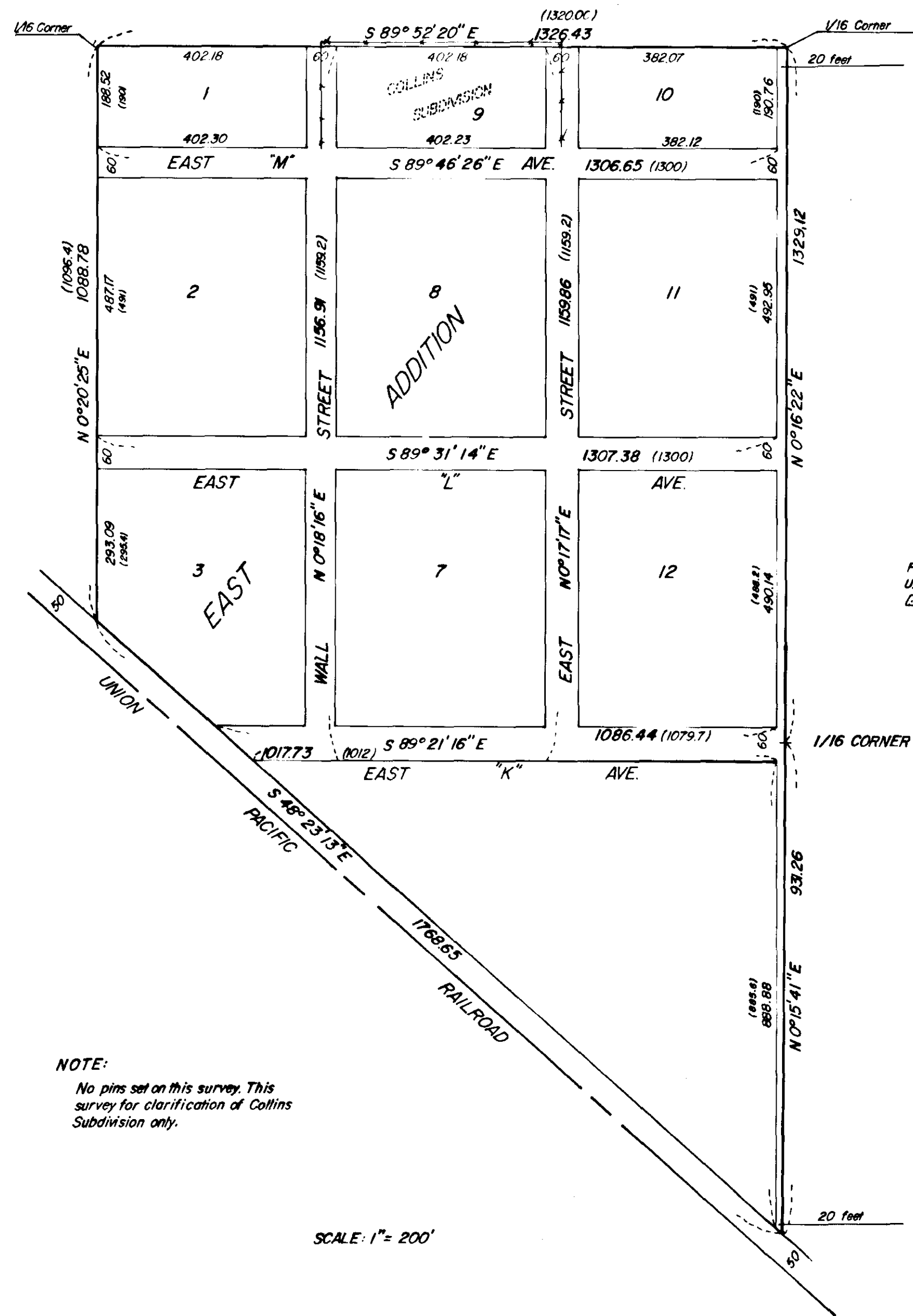


BREAKDOWN OF SECTION 9, T3S, R38 E, W.M.



BASIS OF BEARING
FORWARD BEARING AS PUBLISHED BY
U.S.C. & G.S. FROM Δ VALLEY TO
 Δ COLLEGE

REFERENCE MATERIAL

PLAT OF EAST ADDITION
PLAT OF PROGRESS PLAZA
SURVEY NO. 69-70
SURVEY NO. 26
SURVEY NO. 42-72
SURVEY NO. 110-78
UNRECORDED SURVEY FOR
CITY OF LA GRANDE BY
ROBERT ORR DATED 10/19/77

LEGEND

- FOUND MONUMENT OF RECORD
- () RECORD DISTANCE AND BEARING
- +—+— EXISTING FENCELINE
- - - RAILROAD

NOTE:
THE WEST 1/16 CORNER BETWEEN SECTION 4 AND SECTION 9 LOCATED FROM PLAT OF PROGRESS PLAZA SURDIVISION, ACCEPTED VERN RUSSELL'S CORNER AS THE 1/16 ON THE BASIS OF BEST AVAILABLE EVIDENCE. RUSSELL'S CORNER PRECEDED THE NE CORNER OF SECTION 9 BY SEVERAL YEARS, AND I DO NOT KNOW THE BASIS FOR SETTING EITHER CORNER. RUSSELL'S CORNER IS ONLY 0.5 FEET EAST OF THE PROPORTIONED CORNER POSITION.

REGISTERED
PROFESSIONAL
LAND SURVEYOR
Gregory T. Blackman
OREGON
GREGORY T. BLACKMAN
991

BAGETT, GRIFFITH & ASSOCIATES		
Lo Grande, Oregon		
Map of Survey		
PLACEMENT OF EAST ADDITION		
LA GRANDE		
UNION COUNTY, OREGON		
SURVEYED FOR	JOHN ROSS COLLINS	
SURVEYED BY	GTB	1/79
Scale: GIVEN	Drawn by: RGR	1/79