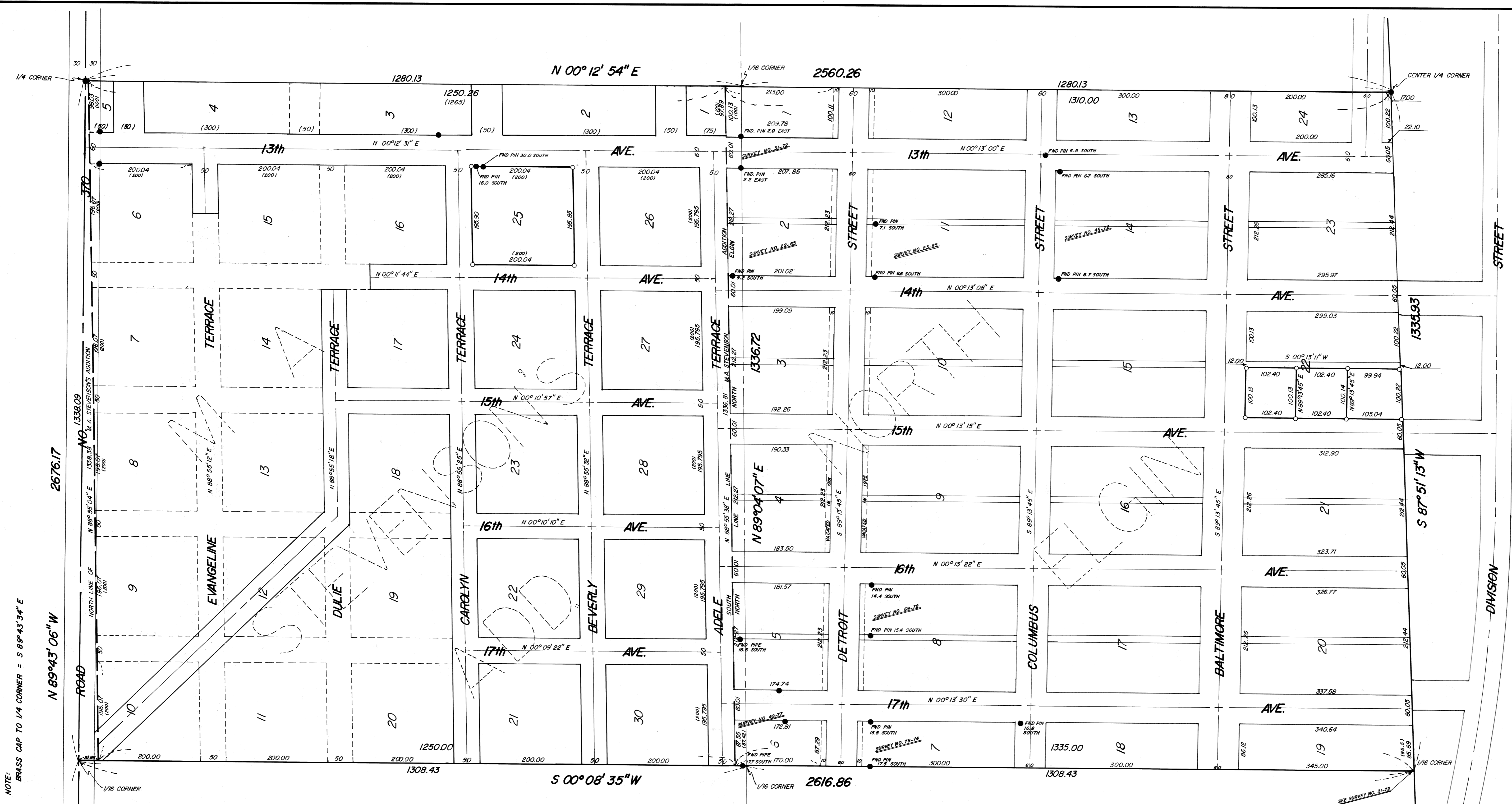


REFERENCE MATERIAL

PLAT OF NORTH ELGIN
PLAT OF M.A. STEVENSON
MAPS OF SURVEY

22-65
23-65
3-71 NO PINS FOUND
70-71
31-72
45-72
58-72
25-74
78-74
5-75
47-77 NO PINS FOUND
49-77



NOTE: BRASS CAP TO 1/4 CORNER = S 89°43'34" E
 SET 0.37 SOUTH OF 1" IRON PIN
 COUNTY 1339.08
 ROAD N 89°43'06" W
 2676.17
 10
 15
 16

LEGEND

- FOUND MONUMENT OF RECORD
- FOUND UNRECORDED MONUMENT
- SET 5/8" x 30" IRON PIN
- () RECORD BEARING AND DISTANCE (IF OTHER THAN TRUE)
- - - VACATED PORTIONS
- - - 1/16th LINE
- ⊥ STREET

SURVEYORS STATEMENT

I, DUANE I. GRIFFITH, DO HEREBY CERTIFY THAT I MADE THE SURVEY HEREON SHOWN. THE FOLLOWING IS A STATEMENT OF THE BASIS FOR THE LOCATION OF NORTH ELGIN AND M.A. STEVENSON'S ADDITION TO ELGIN:

THESE SUBDIVISIONS WERE CREATED IN THE E 1/2 OF THE NW 1/4 OF SECTION 15, T 1 N, R 35E, W 1 M, UNION COUNTY OREGON IN THE CITY OF ELGIN. THE PLAT OF NORTH ELGIN IS DATED MAY 1890 AND THE PLAT OF M.A. STEVENSON ADDITION IS DATED MAY 1891. THERE ARE NO MONUMENTS SHOWN AS HAVING BEEN SET ON EITHER PLAT. SURVEY NUMBER 31-72 AS FILED IN THE OFFICE OF THE UNION COUNTY SURVEYOR LOCATES THE E 1/2 OF THE NW 1/4 OF SAID SECTION 15. I FOUND THE FOLLOWING FACTS AS TO THE NORTH ELGIN PLAT: THE PLAT HAS A STATEMENT BY J.W. KIMBLE THAT THE SUBDIVISION IS IN THE SE 1/4 OF THE NW 1/4 OF SECTION 15, HOWEVER THE DESCRIPTION DESCRIBES THE SOUTH 1320 FEET OF THIS SAID E 1/2 OF THE NW 1/4. THE PLAT ALSO PLAINLY SHOWS THE NORTH END OF NORTH ELGIN BY 100 FOOT LOT HAS BEEN IN USE SINCE EARLY IN 1900. ALSO BY THE CONSTRUCTION OF THE DESCRIPTION ON THE PLAT (MCCOMAS' PORTION), AN EAST-WEST DIMENSION OF 100 FEET IS BORNE OUT, WIDTH OF THE SUBDIVISION WILL FIT EXISTING EAST-WEST MEASUREMENT BY LESS THAN A FOOT ON BOTH THE NORTH AND SOUTH ENDS OF THE SUBDIVISION. I THEREFORE WILL USE 100 FOOT BY 25 FOOT AS A CALLS THIS SUBDIVISION IN THE NE 1/4 OF THE NW 1/4 OF SECTION 15. THERE ARE NO DIMENSIONS GIVEN FOR THE REGULAR LOTS OR BLOCKS. IN STUDYING PAST MAPS AND RECORDS I FIND A 25 FOOT BY 100 FOOT LOT HAS BEEN IN USE SINCE EARLY IN 1900. ALSO BY THE CONSTRUCTION OF THE DESCRIPTION ON THE PLAT (MCCOMAS' PORTION), AN EAST-WEST DIMENSION OF 100 FEET IS BORNE OUT, WIDTH OF THE SUBDIVISION WILL FIT EXISTING EAST-WEST MEASUREMENT BY LESS THAN A FOOT ON BOTH THE NORTH AND SOUTH ENDS OF THE SUBDIVISION. I THEREFORE WILL USE 100 FOOT BY 25 FOOT AS A CALLS THIS SUBDIVISION IN THE NE 1/4 OF THE NW 1/4 OF SECTION 15. THE PLAT SHOWS A DISTANCE ON THE EAST LINE OF GRACE STREET (NOW 13th AVENUE) OF 1265 FEET AND ON THE WEST SIDE OF GRACE OVERALL SCHEME INDICATES A NORTH-SOUTH DIMENSION OF 1250 FEET. I THEREFORE WILL USE THIS FIGURE. THE EAST-WEST DISTANCE GIVEN ON SAID PLAT IS 1890 FEET, THIS EXCEEDS THE WIDTH OF THE AREA BY APPROXIMATELY 23 FEET. I FIND NO DISCREPANCY IN EAST-WEST SCALING DISTANCES, SO I EQUALLY PROPORTIONED THIS DISTANCE, USING THE 1250 FEET ON THE EAST LINE OF M.A. STEVENSON ADDITION AND OF M.A. STEVENSON ADDITION, AT THE RECORD 130 FEET NORTHERLY ON THE SUBDIVISION LINE FROM THE CENTER 1/4 CORNER OF SAID SECTION 15, THE WEST LINE OF THESE SUBDIVISIONS ADD UP TO APPROXIMATELY 32 FEET SHORT OF THE TRUE DIMENSION OF THE WEST LINE OF SAID E 1/2 OF THE NW 1/4. IN APRIL 1891, ABOUT A MONTH BEFORE THE PLAT OF M.A. STEVENSON ADDITION WAS RECORDED, THE 32 FEET EXCESS LAID TO THE SOUTH OF A STREET (NOW ADELE TERRACE), I FIND THIS IS ERRONEOUS. I MADE A CAREFUL STUDY OF THE EXISTING LOCATION OF STREETS AND OTHER LINES OF OCCUPANCY AND FIND THAT BY FAR THE BEST FIT IS TO PLACE THE NW CORNER OF NORTH ELGIN, WHICH ALSO IS THE SW CORNER OF M.A. STEVENSON ADDITION, AT RECORD DISTANCE 1335 FEET NORTHERLY FROM THE SW CORNER OF SAID E 1/2. AS M.A. STEVENSON ADDITION WAS CREATED ABOUT ONE YEAR AFTER NORTH ELGIN, THERE WAS IN ALL PROBABILITY SOME MARKS OF THE LOCATION OF PARALLEL WITH NORTH ELGIN. I USE RECORD DISTANCES NORTH ALONG THE WEST LINE. I FIND THE EXISTING STREETS AND OTHER LINES OF OCCUPANCY TO FIT IN A REASONABLY HARMONIOUS RELATIONSHIP IN BOTH SUBDIVISIONS.

Duane I. Griffith P.L.S. 644

REGISTERED PROFESSIONAL LAND SURVEYOR

 OREGON
 JULY 10, 1964
 DUANE I. GRIFFITH
 844

BAGETT, GRIFFITH & ASSOCIATES
La Grande, Oregon

Map of Survey
BLOCK 22 OF NORTH ELGIN
BLOCK 25 OF M.A. STEVENSON
ELGIN
UNION COUNTY, OREGON

SURVEYED FOR	S. HUTSON	D. HARRISON
SURVEYED BY	DIG	9-78
Scale: 1" = 100'	Drawn by: RGR	11-78