

BASIS OF BEARING

SURVEY NO. 106-78

REFERENCE MATERIAL

SURVEY NO. 106-78

SURVEY NO. 105-77

LEGEND

- FOUND MONUMENT OF RECORD
- SET 5/8" x 30" IRON PIN WITH PLASTIC CAP MARKED B-G-A SURVEY MARKER
- ( ) RECORD DISTANCE OR BEARING

REGISTERED  
PROFESSIONAL  
LAND SURVEYOR

*Gregory T. Blackman*

OREGON  
JULY 13, 1973  
GREGORY T. BLACKMAN  
991

**BAGETT, GRIFFITH & ASSOCIATES**

La Grande, Oregon

Map of Survey

LOTS 3 and 4  
BLOCK 28

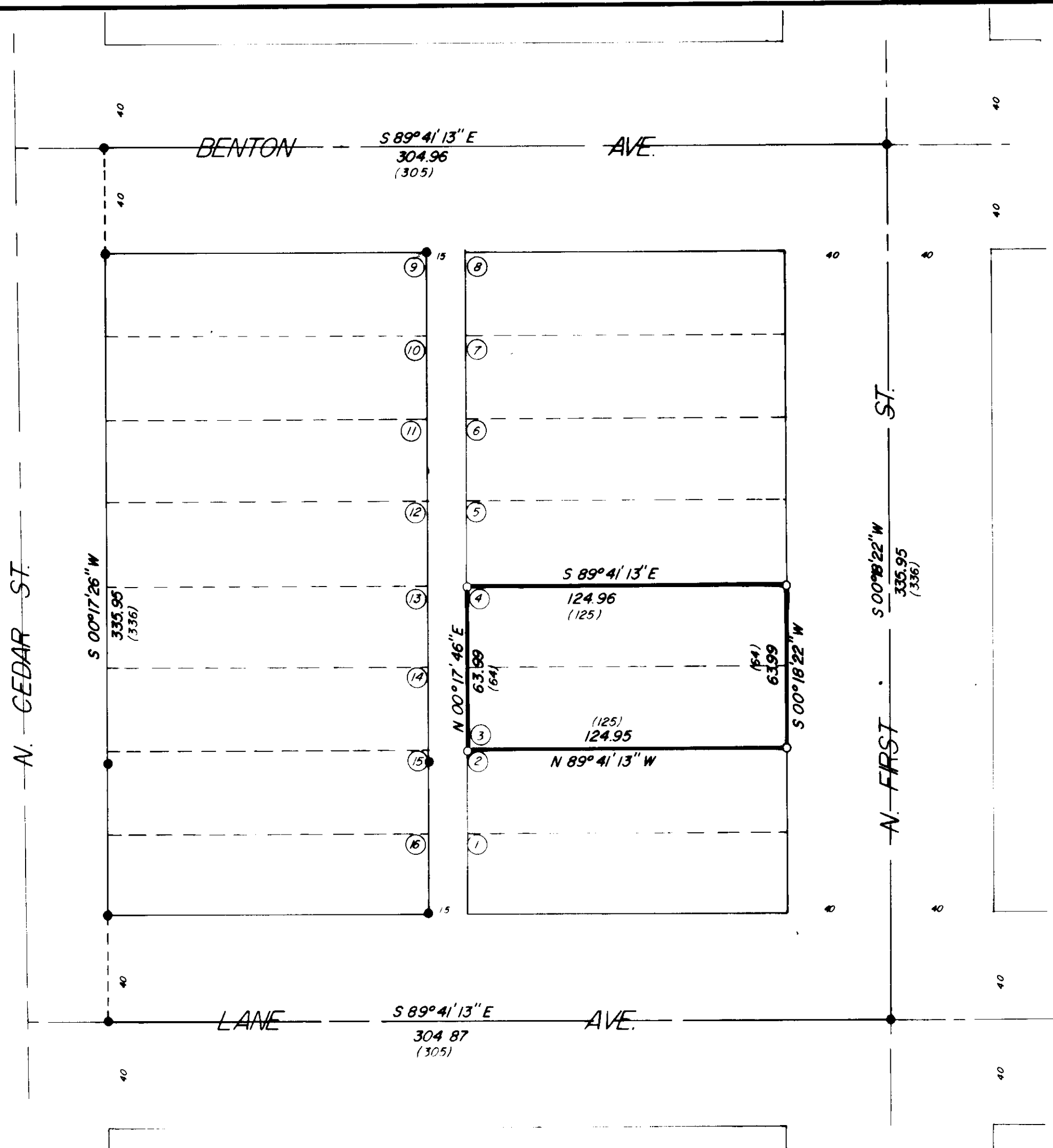
RIVERSIDE ADDITION  
LA GRANDE

UNION COUNTY, OREGON

SURVEYED FOR RANCH and HOME REALTY

SURVEYED BY GTB 11/78

Scale: 1" = 40' Drawn by: RGR 11/78



147-78