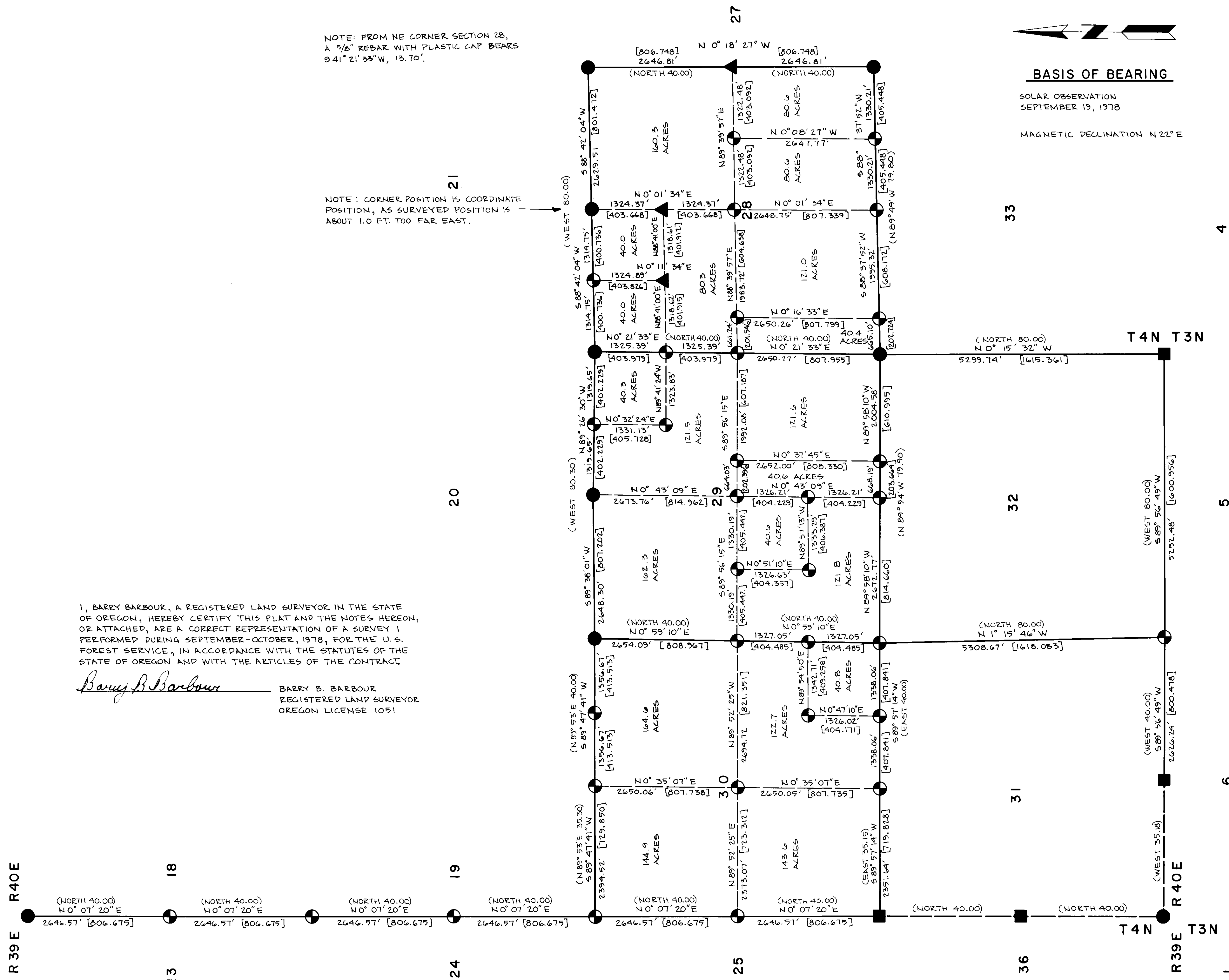


NOTE: FROM NE CORNER SECTION 28,
A 3/8" REBAR WITH PLASTIC CAP BEARS
0 41' 21" 33" W, 13.70'.

NOTE: CORNER POSITION IS COORDINATE
POSITION, AS SURVEYED POSITION IS
ABOUT 1.0 FT. TOO FAR EAST.

I, BARRY BARBOUR, A REGISTERED LAND SURVEYOR IN THE STATE OF OREGON, HEREBY CERTIFY THIS PLAT AND THE NOTES HEREON, OR ATTACHED, ARE A CORRECT REPRESENTATION OF A SURVEY I PERFORMED DURING SEPTEMBER-OCTOBER, 1978, FOR THE U.S. FOREST SERVICE, IN ACCORDANCE WITH THE STATUTES OF THE STATE OF OREGON AND WITH THE ARTICLES OF THE CONTRACT

Barry B. Barbour
BARRY B. BARBOUR
REGISTERED LAND SURVEYOR
OREGON LICENSE 1051



BASIS OF BEARING

SOLAR OBSERVATION
SEPTEMBER 19, 1978

MAGNETIC DECLINATION N 22° E

LEGEND

- FOUND BRASS CAP CORNER
 - SET BRASS CAP FROM ORIGINAL G.L.O. EVIDENCE
 - SET BRASS CAP FROM SURVEY
 - ▲ SET BRASS CAP FROM SURVEY NEAR 1977 BRASS CAPS
- (80.00) G.L.O. RECORD DISTANCE
[800.420] METRIC DISTANCE

REFERENCE MATERIAL

- G.L.O. PLATS AND NOTES
RECORD SURVEY 47-76
" " 107-77
FIELD BOOKS 1-10

U.S.F.S. LANDS

- SECTION 28 - NE 1/4 NW 1/4, WEST 1/2 SE 1/4,
EAST 1/2 SW 1/4, EAST 1/2 WEST
1/2 SW 1/4.
- SECTION 29 - NW 1/4, NW 1/4 NE 1/4, SOUTH 1/2
NE 1/4, WEST 1/2 WEST 1/2 SE 1/4,
NE 1/4 SW 1/4.
- SECTION 30 - SW 1/4, NW 1/4, NE 1/4, NORTH 1/2
SE 1/4, SW 1/4 SE 1/4.
- SECTION 31 - ALL OF THE SECTION
- SECTION 32 - ALL OF THE SECTION
- T 4 N R 40 E W.M.

PREPARED FORM R 6-7100-57 (9/71) FOR CORNERS
UNDER STANDARD U.S.F.S. INDEX FILE NUMBERS.
L1, N1, P1, R1, T1, V1, X1, R3, T3, V3, Z3,
R4, U4, V4, T5, U5, V5, Z5, T6, U6, T7, U7,
V7, T7-B, V7-B, R8, S8, S9, T9, Z9, T9-10,
V9-10, R10, S10, S11, T11, V11, T12, V12, T13,
T4N R40E W.M. ALSO E3 & E11, T3N R40E W.M.

REGISTERED
PROFESSIONAL
LAND SURVEYOR

Barry B. Barbour
OREGON
OCT. 17, 1975
BARRY B. BARBOUR
1051

DEPENDENT RESURVEY OF PORTION OF
T4N, R40E, W.M. & SUBDIVISION SURVEYS OF
SECTIONS 28, 29 & 30, T4N, R40E, W.M.
U.S.F.S. UMATILLA NATIONAL FOREST

SCALE 1" = 1000'	BARRY B. BARBOUR LAND SURVEYOR	SHEET NO. 1/1
DATE 1978		

REFER TO NARRATIVE DRAWER 1/3