

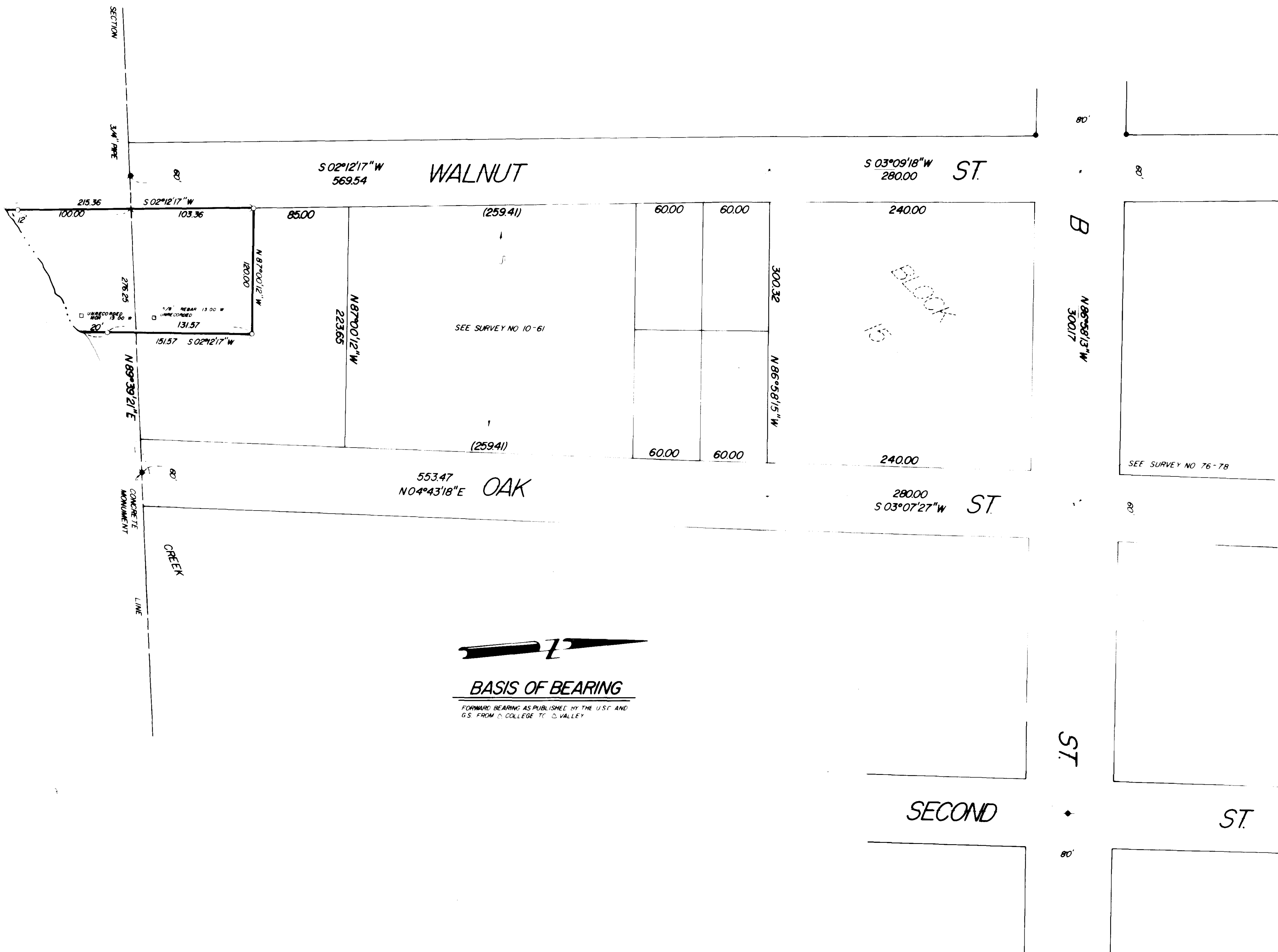
**REFERENCE MATERIAL**

1922 CITY OF LA GRANDE REMONUMENTATION MAP  
 SURVEY NUMBERS  
 10-61  
 84-77  
 76-78

**LEGEND**

- FOUND MONUMENT OF RECORD
- SET 5/8" x 30" IRON PIN WITH PLASTIC CAP MARKED B G A SURVEY MARKER
- RECORD BEARING AND DISTANCE
- UNRECORDED MONUMENT

REGISTERED  
 PROFESSIONAL  
 LAND SURVEYOR  
 G. W. Griffith  
 OREGON  
 JULY 1917  
 GREAT FALLS, OREGON  
 89



**BASIS OF BEARING**

FORWARD BEARING AS PUBLISHED BY THE U.S.C. AND  
 G.S. FROM COLLEGE TO VALLEY

**BAGETT, GRIFFITH & ASSOCIATES**  
 La Grande, Oregon  
 Map of Survey  
 PARCEL IN THE SW 1/4 OF THE SE 1/4  
 SECTION 7, AND THE NW 1/4 OF THE  
 NE 1/4 SECTION 18 T3S R38E W1M  
 LA GRANDE  
 UNION COUNTY, OREGON  
 SURVEYED FOR JOHN BOWLING  
 SURVEYED BY GTB 8-78  
 Scale 1"=50' Drawn by JJA 8-78