

REFERENCE MATERIAL

SURVEY NO. 23-78  
 SURVEY NO. 119-78



BASIS OF BEARING

SURVEY NO. 23-78

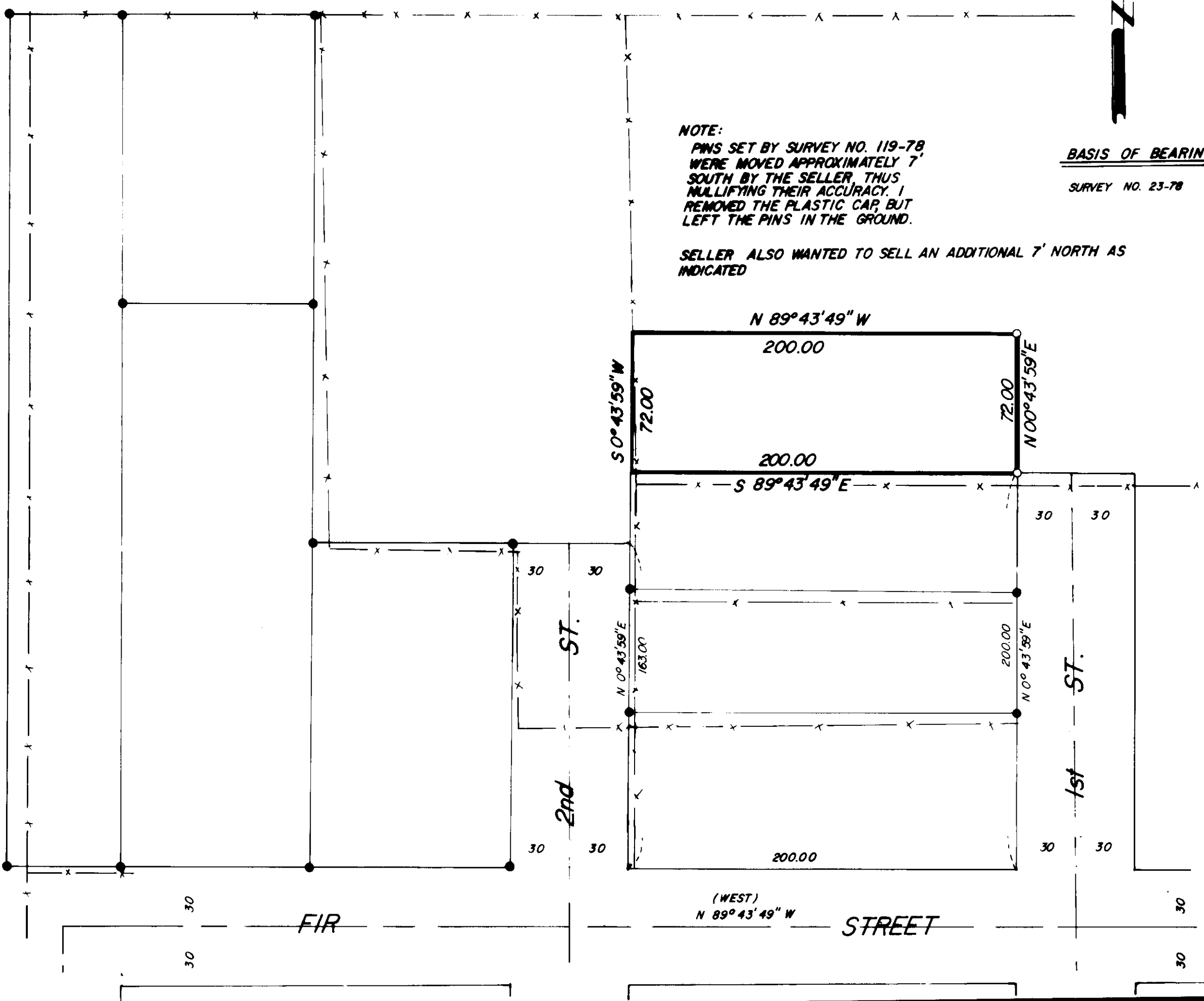
**NOTE:**

PINS SET BY SURVEY NO. 119-78 WERE MOVED APPROXIMATELY 7' SOUTH BY THE SELLER, THUS NULLIFYING THEIR ACCURACY. I REMOVED THE PLASTIC CAP, BUT LEFT THE PINS IN THE GROUND.

SELLER ALSO WANTED TO SELL AN ADDITIONAL 7' NORTH AS INDICATED

LEGEND

- SET 5/8" x 30" IRON PIN WITH PLASTIC CAP MARKED B-6-A SURVEY MARKER
- FOUND MONUMENT OF RECORD
- x — FENCELINE
- ( ) RECORD DISTANCE OR BEARING



REGISTERED  
 PROFESSIONAL  
 LAND SURVEYOR

*Gregory T. Blackman*

OREGON  
 JUL 1 1978  
 GREGORY T. BLACKMAN  
 991

**BAGETT, GRIFFITH & ASSOCIATES**

La Grande, Oregon

Map of Survey  
 THE EAST LINE OF A PARCEL IN THE  
 NW 1/4 OF THE SW 1/4 OF SECTION 18  
 T4S, R40E W.M.

UNION  
 UNION COUNTY OREGON

SURVEYED FOR	CATHY SCHROEDER	
SURVEYED BY	G T B	11/78
Scale: 1" = 50'	Drawn by: R G R	11/78

138-78