

BASIS OF BEARING

FORWARD BEARING AS PUBLISHED BY USC & GS
FROM Δ VALLEY TO Δ COLLEGE

LEGEND

- () RECORD DISTANCE OR BEARING
- SET 5/8" x 30" IRON PIN WITH PLASTIC CAP MARKED B-G-A SURVEY MARKER
- FOUND MONUMENT OF RECORD
- FOUND UNRECORDED PIN
- ⊙ SCRIBEL X IN CONCRETE
- - - + FENCELINE

REGISTERED
PROFESSIONAL
LAND SURVEYOR

Gregory T. Blackman

OREGON
JULY 13 1973
GREGORY T. BLACKMAN
991

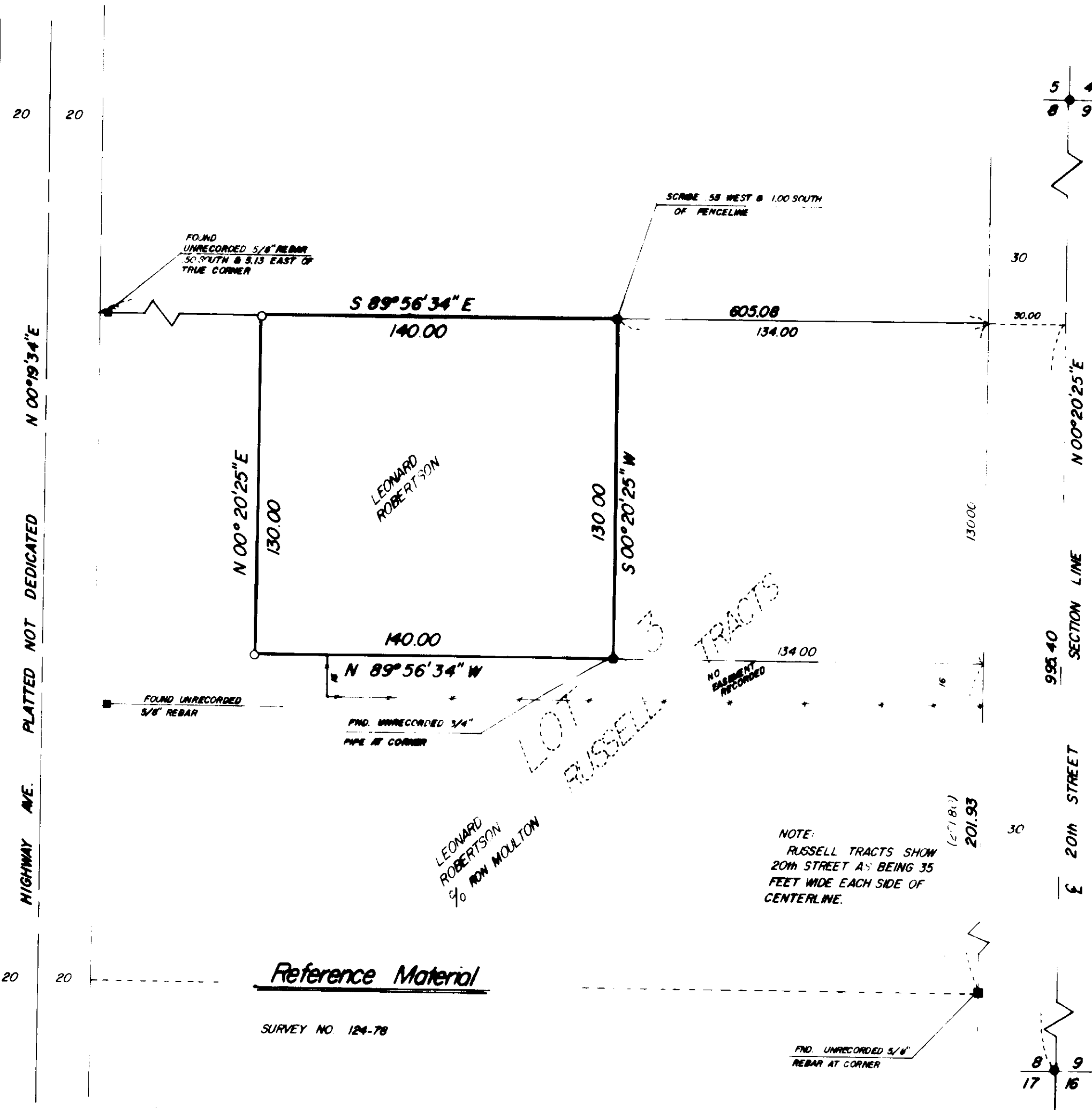
BAGETT, GRIFFITH & ASSOCIATES

La Grande, Oregon

Map of Survey

A PARCEL IN THE
SE 1/4 OF THE SE 1/4 OF
SECTION 8, T3 S, R38E, W.M.
LA GRANDE
UNION COUNTY, OREGON

SURVEYED FOR	LEONARD ROBERTSON	
SURVEYED BY	GTB	10-78
Scale: 1" = 40'	Drawn by RGR	10-78



NOTE:
RUSSELL TRACTS SHOW
20th STREET AS BEING 35
FEET WIDE EACH SIDE OF
CENTERLINE.

Reference Material

SURVEY NO. 124-78

133-78