

"WB" 298+90.44
 "ML" POC 19+3.77
 PSC 19+61.19

CURVE Δ = 6°
 D = 90'
 L = 300'

"EB" 300+79.69
 "ML" POC 21+85.44
 N 88°52'25" W

PCS 22+61.19
 N 87°19'07" W

S Δ = 4°
 a = 0.5'
 S L = 400'

S Δ = 1°
 a = 0.5'
 S L = 200'

CURVE Δ = 5°
 D = 110'
 L = 500'

FD BRASS CAP - O.S.H.D.
 STAMPED 310100
 SHOULD BE 301+00

NORTH-SOUTH CENTERLINE OF SECTION 15
 N 00°10'53" W

C.M.L. LINE
 M.F. ALISTER LANE

S 89°40'15" W
 231.74'

N 10°22'45" E
 868.35'

PS 28+92.93
 N 83°19'07" W

60.00'

PCS 30+92.93
 N 84°19'07" W

30.425'

N 6°01'44" E

30.00'

POC 344+00
 N 87°23'22" W
 (N 2°26'45" E 32.37')

844.04'

(N 2°02'21" E 48.58')

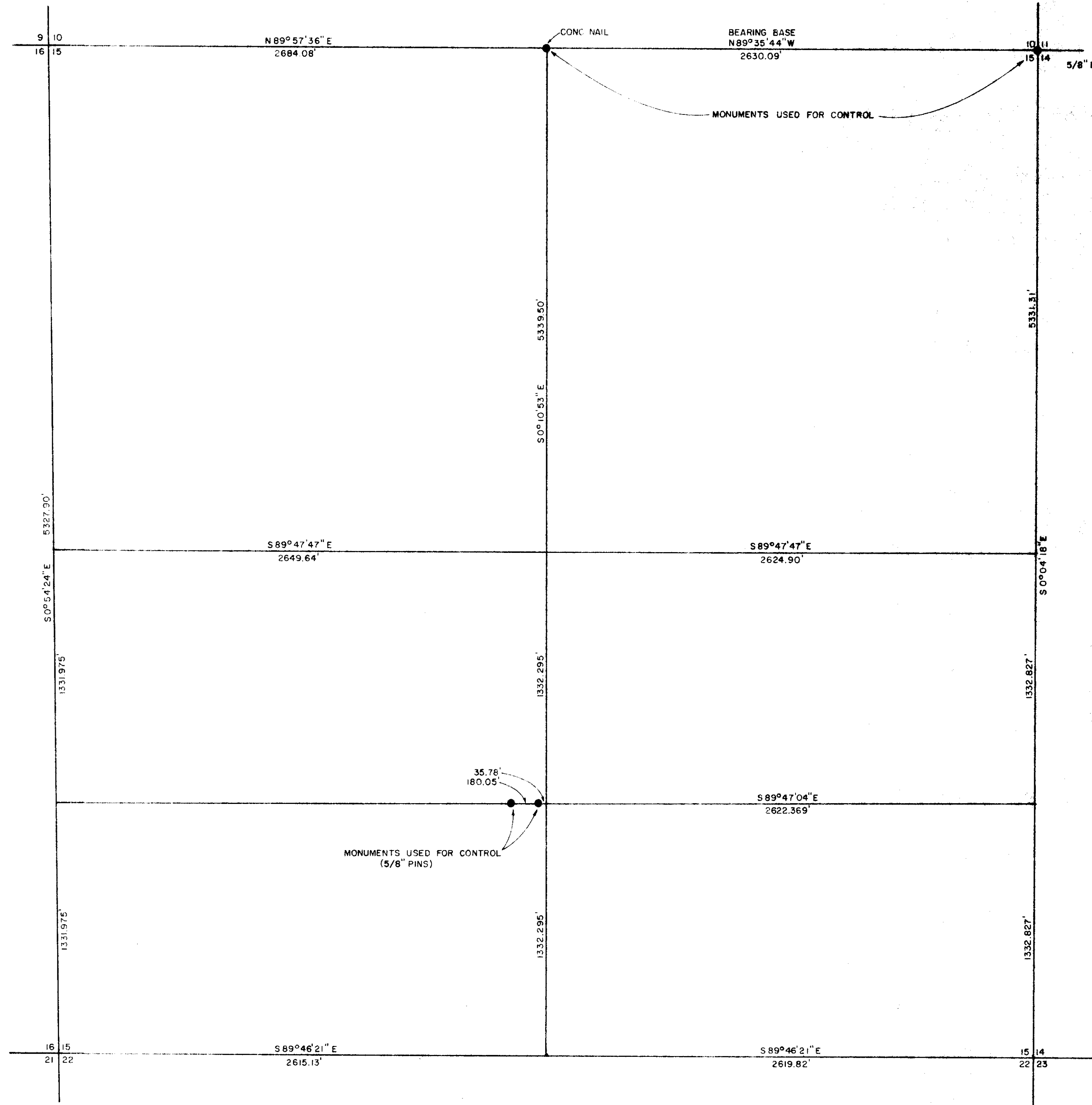
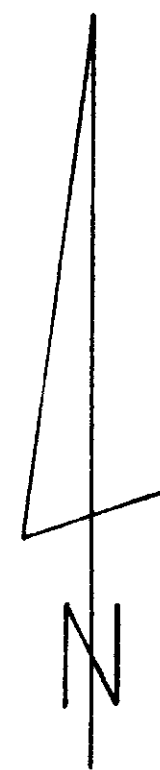
872.56'

PCS 35+92.93
 N 89°19'07" W

50.00'

PST 37+92.93
 S 89°40'53" W

SCALE 1" = 100'



SECTION BREAKDOWN AS PER
 BAGETT, GRIFFITH & ASSOCIATES
 SURVEY DATED MAY 1977 43-77
 SECTION 15, T 3 S, R 38 E.W.M.

SCALE 1" = 400'

NORPA DEVELOPMENT, INC. HERMISTON, OREGON	
OLIVER INN MOTEL	
SURVEY	
DESIGN D.S.	CHECK D.S.
DRAWN D.S.	APPROVE D.S.
SCALE	DATE
JUNE 14, '78	13/13
REV. DATE	DESCRIPTION

122-18