

LEGEND

- SET MONUMENT AS DESCRIBED ON U.S.F.S. FORMS R6-7100-57 FROM ORIGINAL SURVEY EVIDENCE.
- ⊕ SET MONUMENT AS DESCRIBED ON U.S.F.S. FORMS R6-7100-57 BASED ON SURVEY.
- FOUND 2 1/2" BRASS CAP MONUMENT STAMPED AS SHOWN.
- X SEARCHED FOR EVIDENCE OF ORIGINAL CORNER & ACCESSORIES & COULD NOT FIND ANYTHING.
- () RECORD DATA
- [] METRIC DISTANCE
- SURVEYED LINE
- - - NON-SURVEYED LINE

REFERENCE MATERIAL

G.L.O. NOTES & PLATS FOR T4N, R40E, W.M.
 FIELD BOOKS 1-3 FOR OWENS 77 CADASTRAL T4N, R40E, W.M.
 RECORD SURVEY 47-76

NOTE: THESE SECTION CORNERS ARE CLOSING CORNERS.

BASIS OF BEARING

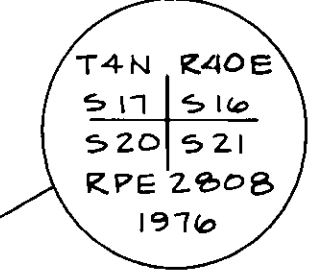
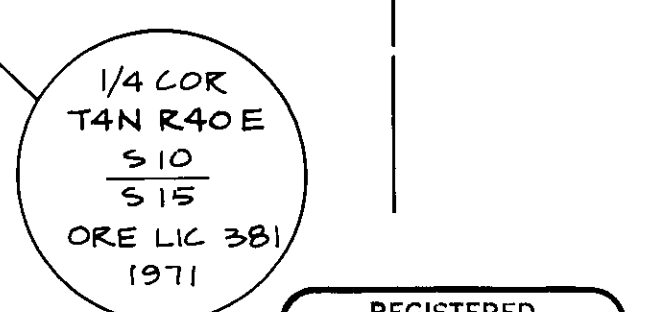
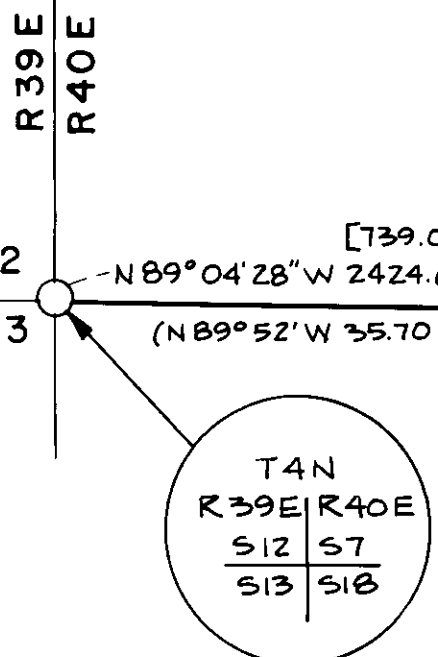
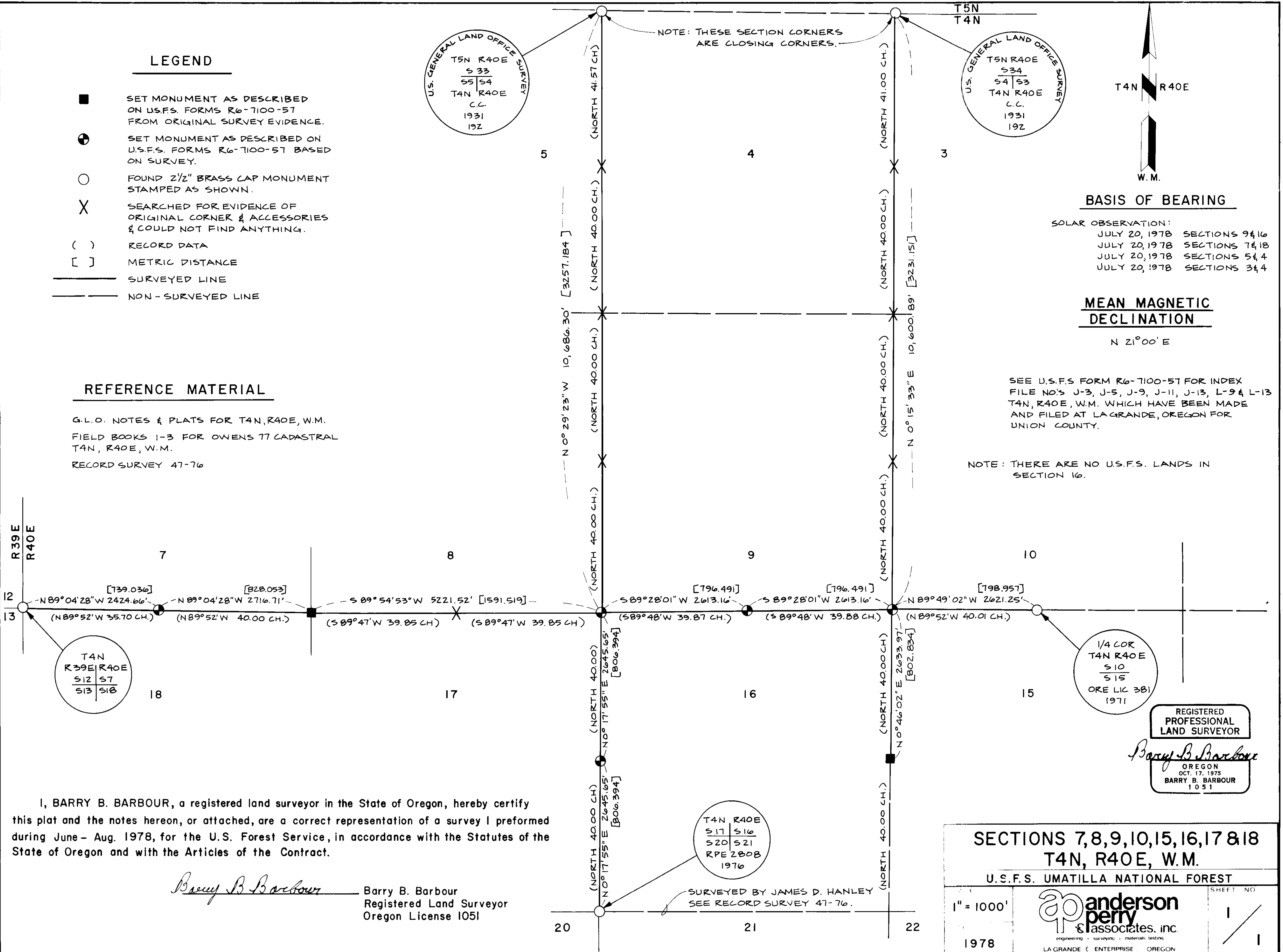
SOLAR OBSERVATION:
 JULY 20, 1978 SECTIONS 9 & 16
 JULY 20, 1978 SECTIONS 7 & 18
 JULY 20, 1978 SECTIONS 5 & 4
 JULY 20, 1978 SECTIONS 3 & 4

MEAN MAGNETIC DECLINATION

N 21° 00' E

SEE U.S.F.S. FORM R6-7100-57 FOR INDEX FILE NO'S J-3, J-5, J-9, J-11, J-13, L-9 & L-13 T4N, R40E, W.M. WHICH HAVE BEEN MADE AND FILED AT LA GRANDE, OREGON FOR UNION COUNTY.

NOTE: THERE ARE NO U.S.F.S. LANDS IN SECTION 16.



I, BARRY B. BARBOUR, a registered land surveyor in the State of Oregon, hereby certify this plat and the notes hereon, or attached, are a correct representation of a survey I performed during June - Aug. 1978, for the U.S. Forest Service, in accordance with the Statutes of the State of Oregon and with the Articles of the Contract.

Barry B. Barbour
 Barry B. Barbour
 Registered Land Surveyor
 Oregon License 1051

SURVEYED BY JAMES D. HANLEY
 SEE RECORD SURVEY 47-76.

SECTIONS 7, 8, 9, 10, 15, 16, 17 & 18
T4N, R40E, W.M.
 U.S.F.S. UMATILLA NATIONAL FOREST

1" = 1000'
 1978

Anderson perry & associates, inc.
 engineering • surveying • materials testing
 LA GRANDE • ENTERPRISE • OREGON

SHEET NO. 1

REGISTERED PROFESSIONAL LAND SURVEYOR
Barry B. Barbour
 OREGON
 OCT. 17, 1975
 BARRY B. BARBOUR
 1051