

N 1/4 CORNER SECTION 12
FOUND 5/8" IRON PIN

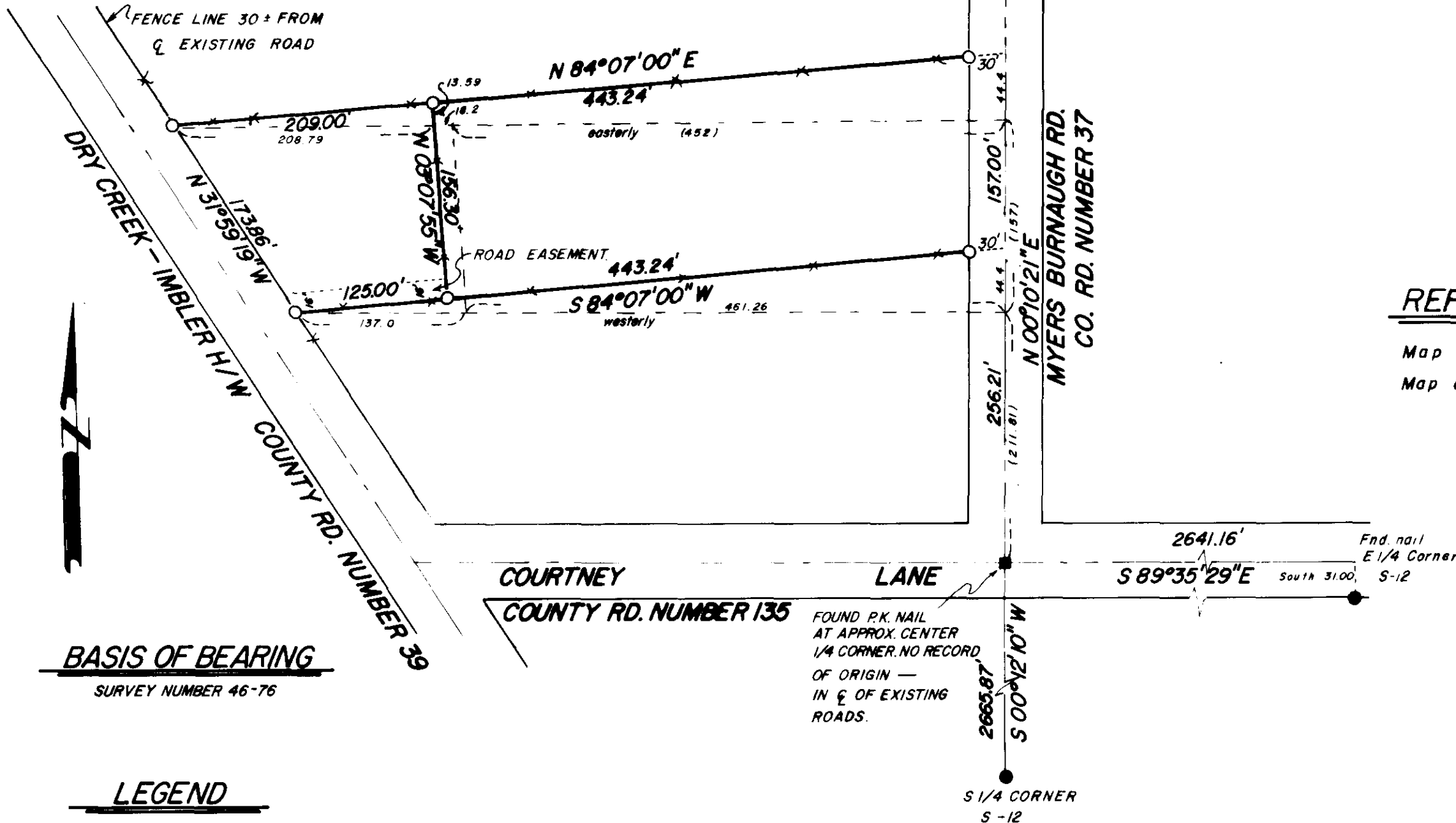
NOTE

This survey was made to establish existing fence lines as record boundary lines by an exchange of deeds.

REGISTERED
PROFESSIONAL
LAND SURVEYOR
Duane I. Griffith
OREGON
JULY 10, 1934
DUANE I. GRIFFITH
644

REFERENCE MATERIAL

Map of survey no. 46-76
Map of survey no. 64-76



BASIS OF BEARING
SURVEY NUMBER 46-76

LEGEND

- Found monument of record
- Set 5/8"x30" iron pin
- Found unrecorded monument as shown
- () Record bearing & distance
- Approximate location of present deed descriptions

FOUND P.K. NAIL
AT APPROX. CENTER
1/4 CORNER. NO RECORD
OF ORIGIN —
IN C OF EXISTING
ROADS.

BAGETT, GRIFFITH & ASSOCIATES La Grande, Oregon		
Map of Survey PARCELS IN THE S.E. 1/4 OF THE N.W. 1/4, SECT. 12 T1S R38E W.M. SUMMERSVILLE UNION COUNTY, OREGON		
SURVEYED FOR	ALBERT V. GRIFFIN	
SURVEYED BY	DIG	7-78
Scale: 1" = 100'	Drawn by: JJA	7-78