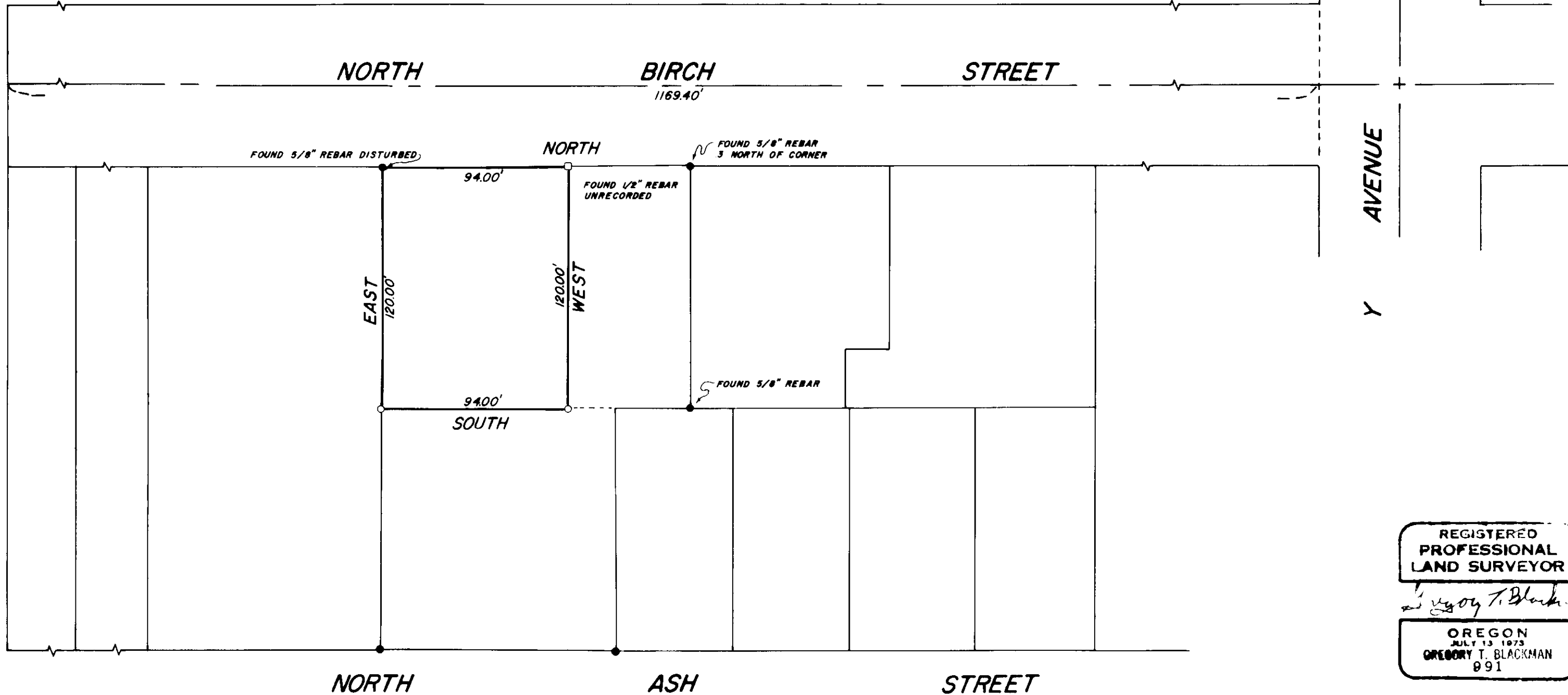




BASIS OF BEARING
 NORTH BIRCH STREET ASSUMED
 NORTH.



REGISTERED
 PROFESSIONAL
 LAND SURVEYOR

Gregory T. Blackman

OREGON
 JULY 13 1973
 GREGORY T. BLACKMAN
 891

REFERENCE MATERIAL

1922 CITY OF LAGRANDE REMONUMENTATION MAP
 SURVEY NUMBER
 40-71

LEGEND

- FOUND MONUMENT OF RECORD
- SET 5/8" x 30" IRON PIN WITH PLASTIC CAP MARKED B-G-A SURVEY MARKER.
- FOUND 1/2" REBAR UNRECORDED

BAGETT, GRIFFITH & ASSOCIATES

La Grande, Oregon

Map of Survey

PARCEL IN OUT LOT 159 OF CHAPLIN'S
 SUPPLEMENTAL ADDITION

LAGRANDE

UNION COUNTY, OREGON

SURVEYED FOR	MIKE CALDWELL	
SURVEYED BY	GTB	6-78
Scale: 1" = 50'	Drawn by: JJA	6-78

89-78