

FOUND 3/4" PIPE

18.00'

AVENUE  
N 89°39'22" W

739.74' (740.00')  
319.89' (320.00')

LEAD PLUGS IN CURB

FOUND CONCRETE NAIL



**BASIS OF BEARING**

FORWARD BEARING AS PUBLISHED BY THE  
U.S.C. & G.S. FROM COLLEGE TO VALLEY.

**LEGEND**

- SET 5/8" x 30" RE-BAR WITH PLASTIC CAP MARKED B-G-A SURVEY MARKER.
- FOUND MONUMENT OF RECORD
- ( ) RECORD BEARING OR DISTANCE

**REFERENCE MATERIAL**

1922 REMONUMENTATION MAP OF LA GRANDE.  
SURVEY NUMBER  
75-76

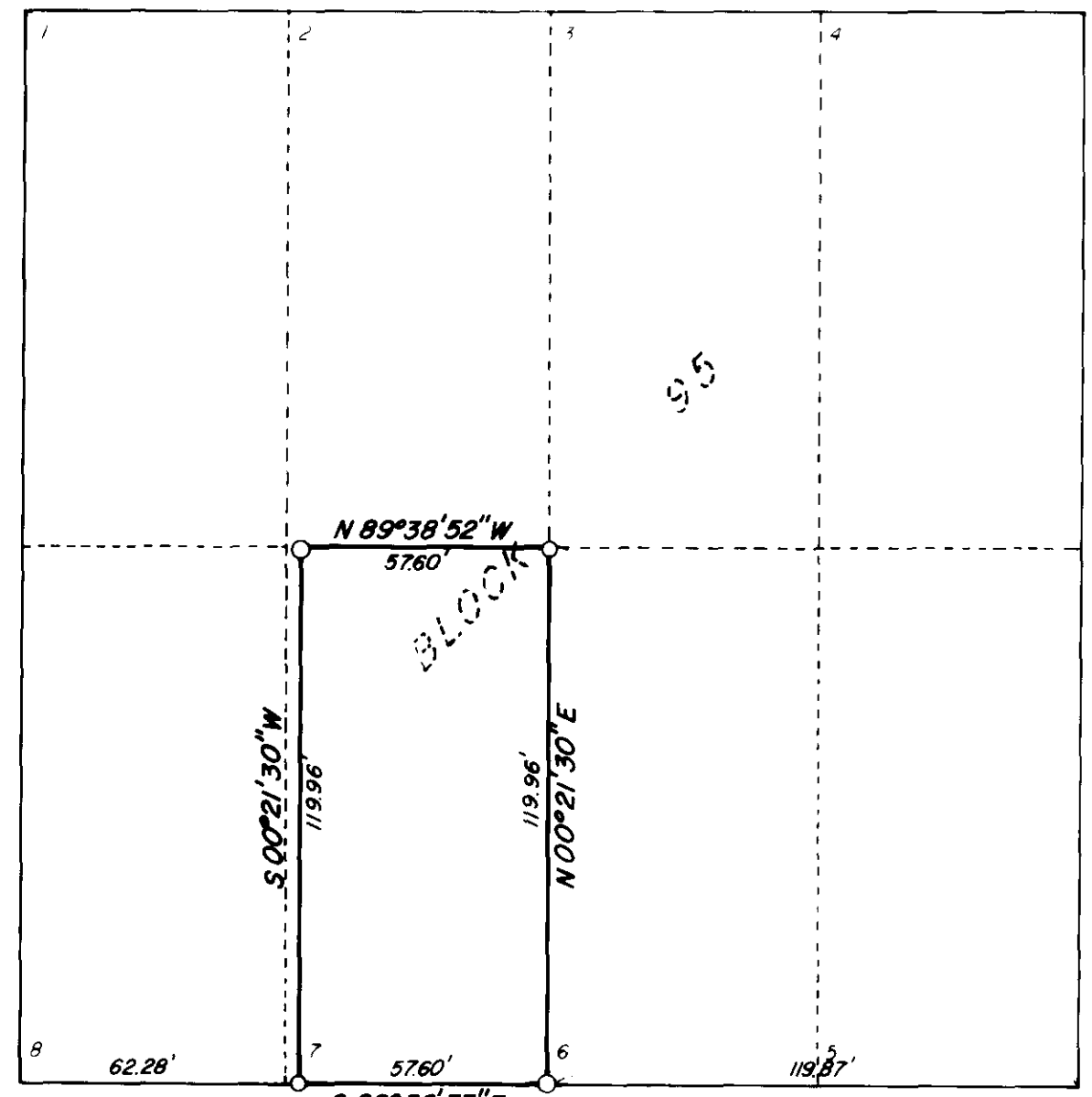
SECOND STREET

S 00°21'17" W  
319.88' (320.00')

THIRD STREET

N 00°22'47" E  
319.95' (320.00')

FOURTH STREET



N 00°10'42" E  
1431.65'

1921.58'  
S 89°38'33" E

319.75' (320.00')  
S 89°38'33" E

FOUND 3/4" PIPE  
DISTURBED

H AVENUE

CENTER 1/4 CORNER  
SECTION 7 3/4" PIPE

REGISTERED  
PROFESSIONAL  
LAND SURVEYOR

OREGON  
JULY 13, 1975  
GREGORY J. BLACKMAN  
991

**BACETT, GRIFFITH & ASSOCIATES**  
La Grande, Oregon

|   |                       |      |
|---|-----------------------|------|
| Map of Survey   |                       |      |
| THE EAST 57.60 FEET OF LOT 7, BLK. 95<br>CHAPLIN'S ADDITION |                       |      |
| LA GRANDE<br>UNION COUNTY, OREGON                           |                       |      |
| SURVEYED FOR  | TRI - MOUNTAIN REALTY |      |
| SURVEYED BY   | GTB & SSZ             | 7-78 |
| Scale: 1" = 40'   | Drawn by: GTB & JJA   | 7-78 |