

**BASIS OF BEARING**

FORWARD BEARINGS AS PUBLISHED BY THE U.S.C. AND U.S. FROM COLLEGE TO WILLET.

**REFERENCE MATERIAL**

1922 MAP OF SURVEY CITY OF LA GRANDE  
SURVEY NUMBERS

78	55
58	57
79	32-73
94-71	33-73
23-71	96-72
23-68	38-78
34-69	39-78
60-77	22-74
2-60	

(SEE NARRATIVE ATTACHED)

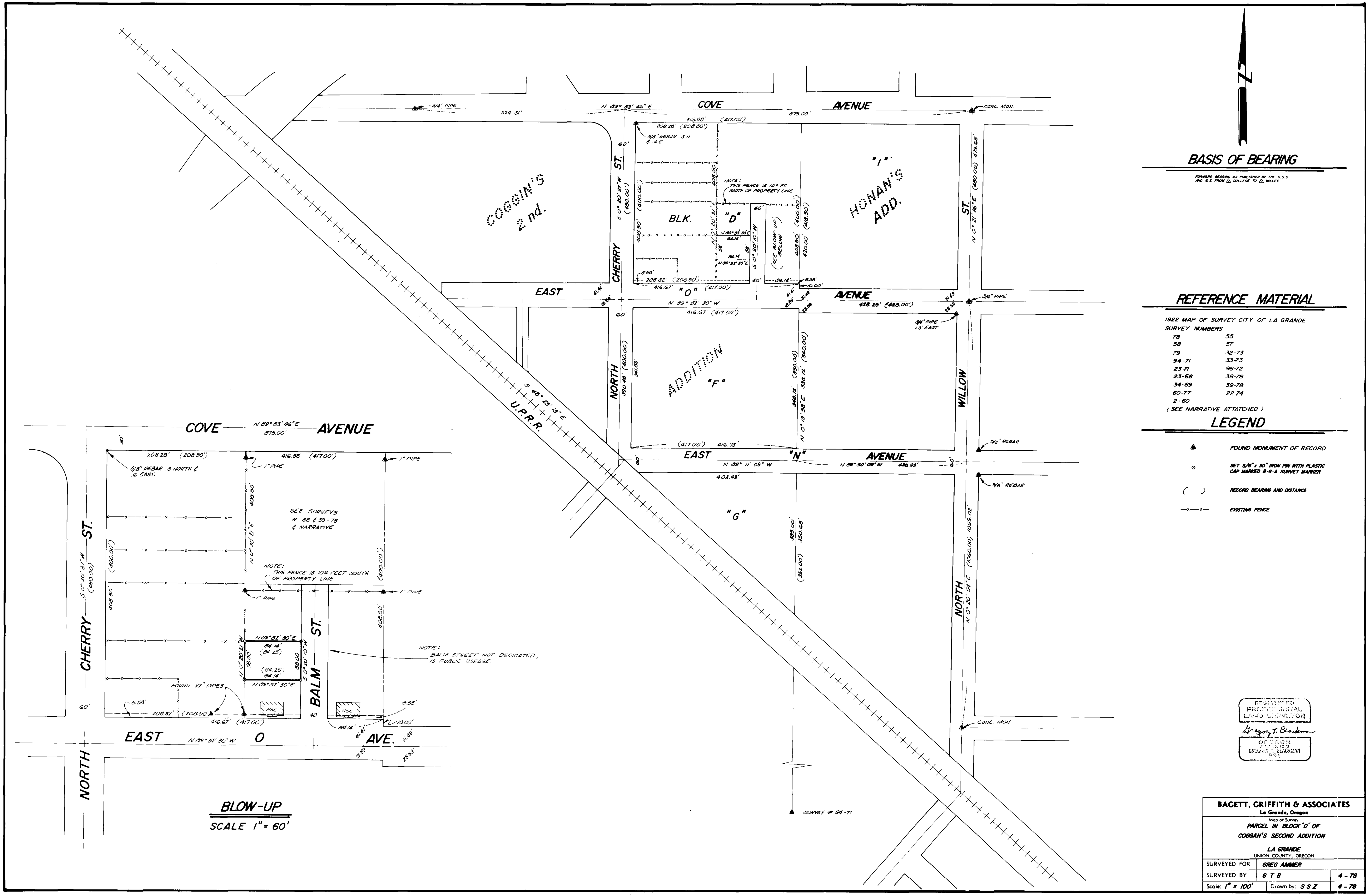
**LEGEND**

- ▲ FOUND MONUMENT OF RECORD
- SET 5/8" x 30" IRON PIN WITH PLASTIC CAP MARKED B-6-A SURVEY MARKER
- ( ) RECORD BEARING AND DISTANCE
- - - EXISTING FENCE

REGISTERED  
PROFESSIONAL  
LAND SURVEYOR  
*Gregory T. Blodgett*  
GREGORY T. BLODGETT  
951

**BAGETT, GRIFFITH & ASSOCIATES**  
La Grande, Oregon  
Map of Survey  
**PARCEL IN BLOCK "D" OF  
COGGAN'S SECOND ADDITION**  
LA GRANDE  
UNION COUNTY, OREGON

SURVEYED FOR	GREG AMMER	
SURVEYED BY	G T B	4-78
Scale: 1" = 100'	Drawn by: S S Z	4-78



**BLOW-UP**  
SCALE 1" = 60'