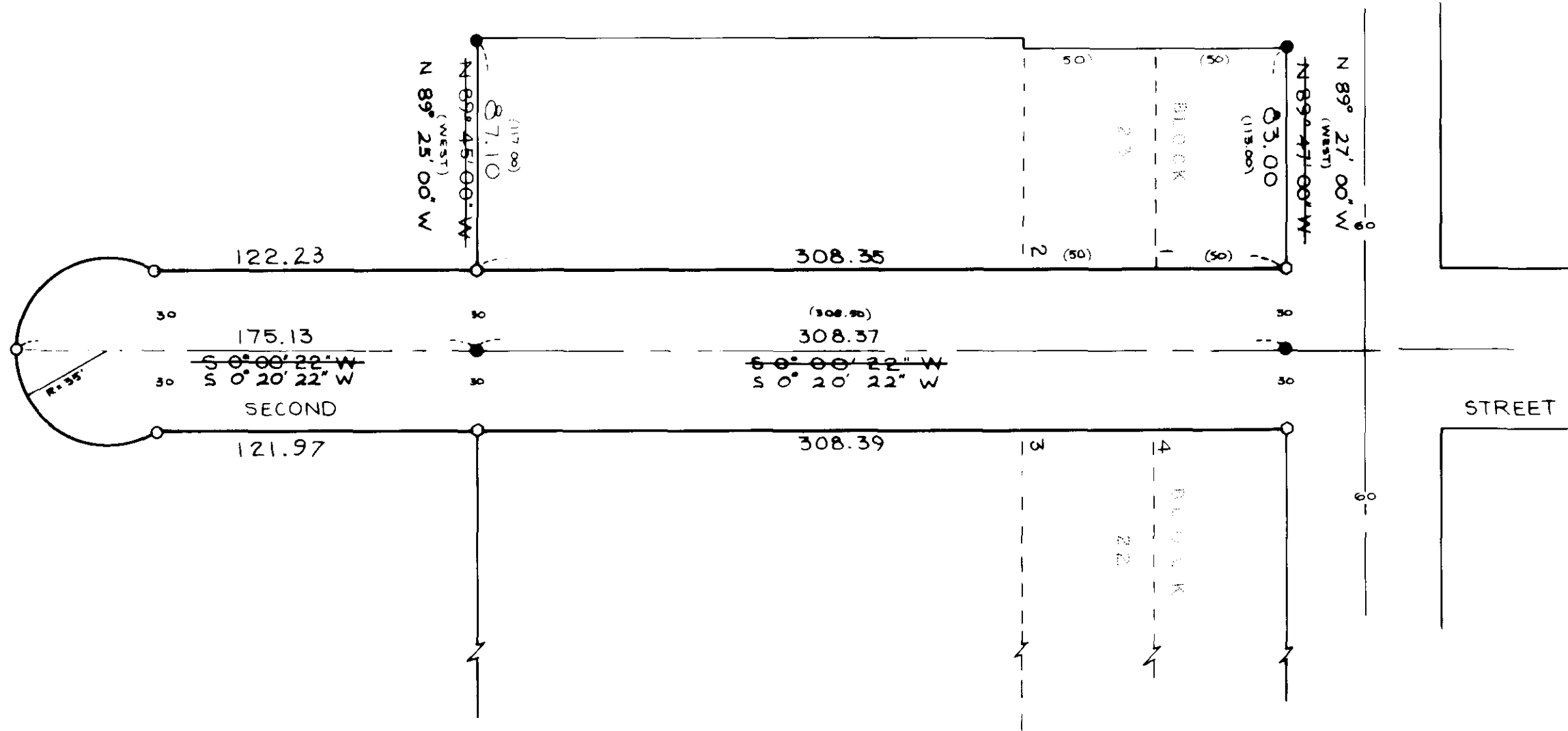


CORRECTED MAP OF SURVEY No. 41-76



BASIS OF BEARING
SOLAR OBSERVATION



REFERENCE MATERIAL

MAP OF SURVEY FOR
REV. CLYDE DILLEY
DATED OCTOBER 23, 1975

LEGEND

- FOUND MONUMENT OF RECORD
 - SET 5/8" x 30" IRON PIN WITH PLASTIC CAP MARKED B.G.A SURVEY MARKER.
 - SET 1/2" x 24" IRON PIN
 - () RECORD BEARING AND DISTANCE
- ~~S 0° 20' 22" W~~ CORRECTED BEARING

REGISTERED
PROFESSIONAL
LAND SURVEYOR
Diane J. Griffith
OREGON
JULY 16, 1968
DUANE J. GRIFFITH
644

BAGETT, GRIFFITH & ASSOCIATES		
La Grande, Oregon		
Map of Survey		
SECOND STREET EXTENTION IN SECTION 19, T4S, R40E, W.M. CITY OF UNION WASH COUNTY, OREGON		
SURVEYED FOR	RICHARD SOCHA	
SURVEYED BY	D. I. G.	
Scale: 1" = 50'	Drawn by: t.d.g.	APR. 1978

51-78