

found 3/8" re-bar
260.02
found 5/8" re-bar

BEAKMAN STREET

CENTER STREET

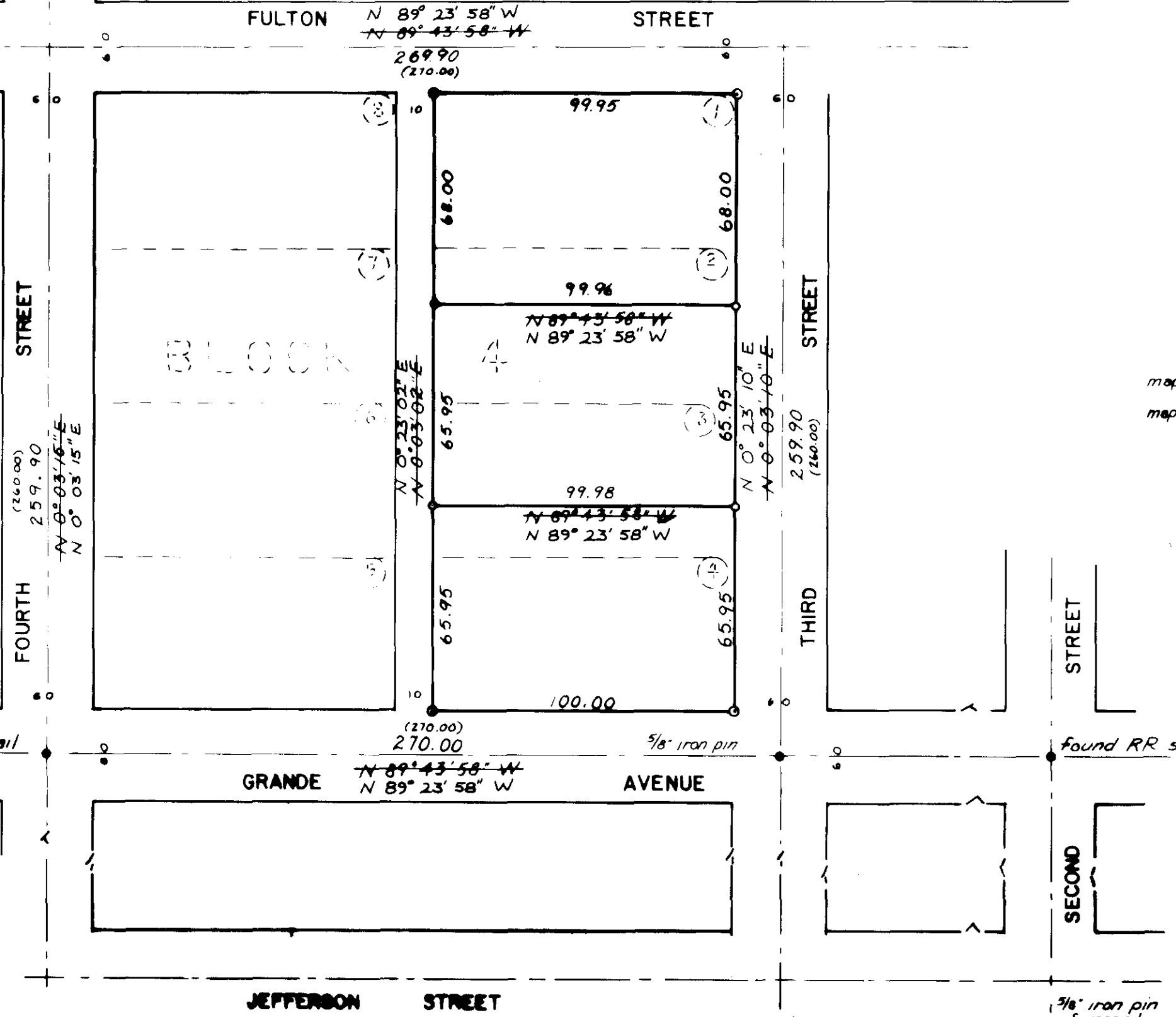
LEGEND

- found unrecorded monument, as shown, destroyed by construction; reset by reference ties
- () record bearing & distance
- ⊙ set 5/8" x 30" re-bar
- set 1/2" x 24" re-bar



BASIS OF BEARING
solar observations at the SE corner of Section 13

REFERENCE MATERIAL
map of survey for Rev. Clyde Dilley, dated Oct. 23, 1975
map of survey for Richard Socha, dated June, 1976



REGISTERED PROFESSIONAL LAND SURVEYOR
Duane I. Griffith
OREGON
JULY 10, 1984
DUANE I. GRIFFITH
644

CORRECTION MAP OF SURVEY NO. 19-77

found concrete nail

GRANDE AVENUE
N 89° 23' 58" W

5/8" iron pin

found RR spike

JEFFERSON STREET

5/8" iron pin of record

5/8" iron pin of record

SURVEY NO. 41-76

BAGETT, GRIFFITH & ASSOCIATES
La Grande, Oregon
Map of Survey
LOTS 1-2-3-4 of BLOCK 4 of HANNAH'S ADDITION to the CITY OF UNION, URSUM COUNTY, OREGON

SURVEYED FOR	BOB CLEMENS
SURVEYED BY	D.I.G. & G.T.B.
Scale: 1" = 40'	Drawn by: g.t.b. & t.dg. APR 1978

50-78