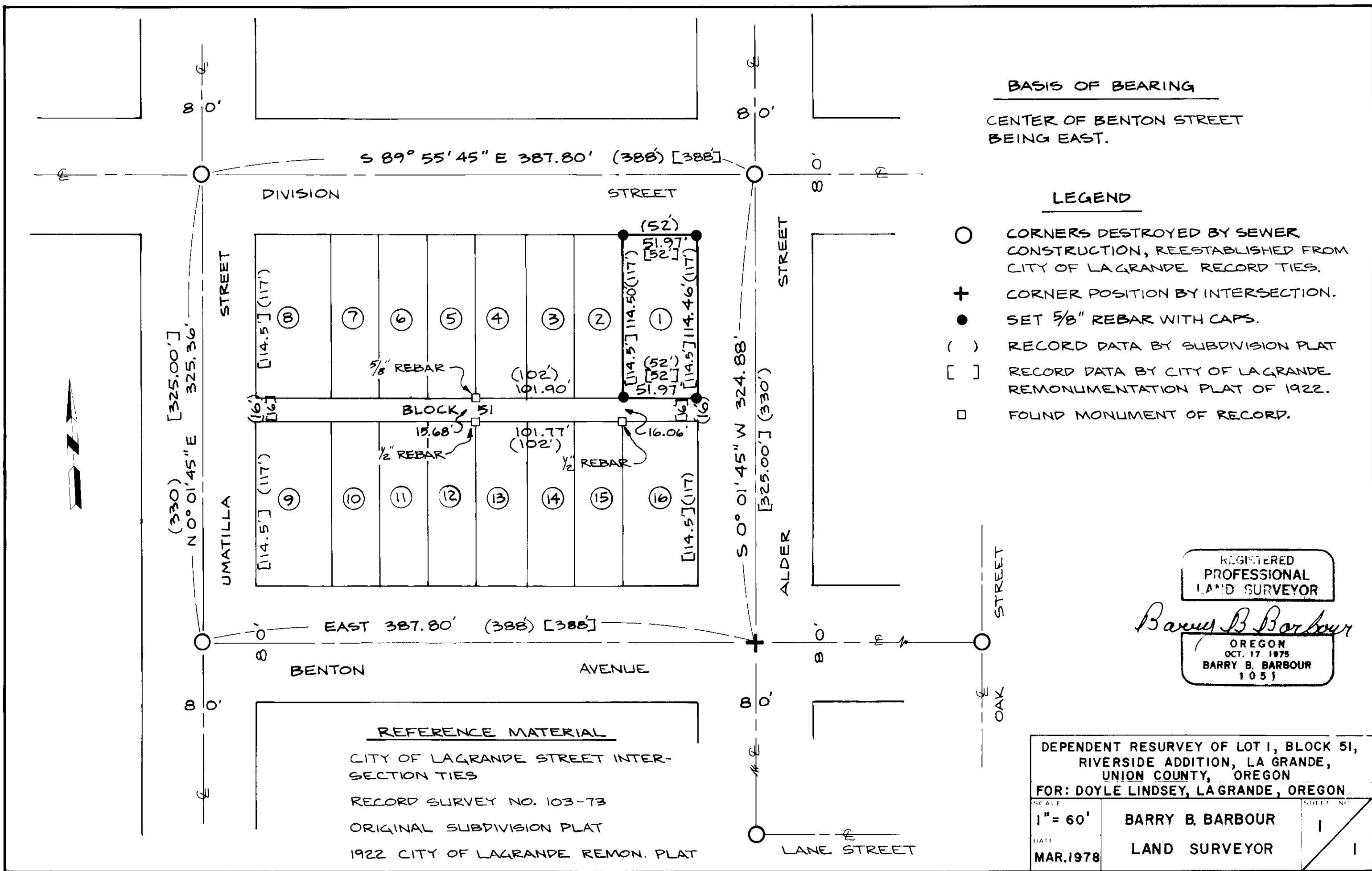


BASIS OF BEARING

CENTER OF BENTON STREET
BEING EAST.

LEGEND

- CORNERS DESTROYED BY SEWER CONSTRUCTION, REESTABLISHED FROM CITY OF LAGRANDE RECORD TIES.
- ⊕ CORNER POSITION BY INTERSECTION.
- SET 5/8" REBAR WITH CAPS.
- () RECORD DATA BY SUBDIVISION PLAT
- [] RECORD DATA BY CITY OF LAGRANDE REMONUMENTATION PLAT OF 1922.
- FOUND MONUMENT OF RECORD.



REFERENCE MATERIAL
CITY OF LAGRANDE STREET INTERSECTION TIES
RECORD SURVEY NO. 103-73
ORIGINAL SUBDIVISION PLAT
1922 CITY OF LAGRANDE REMON. PLAT

REGISTERED
PROFESSIONAL
LAND SURVEYOR

Barry B. Barbour

OREGON
OCT. 17, 1975
BARRY B. BARBOUR
1051

DEPENDENT RESURVEY OF LOT 1, BLOCK 51, RIVERSIDE ADDITION, LA GRANDE, UNION COUNTY, OREGON		
FOR: DOYLE LINDSEY, LA GRANDE, OREGON		
SCALE 1" = 60'	BARRY B. BARBOUR LAND SURVEYOR	SHEET NO. 1
DATE MAR. 1978		1

48.78