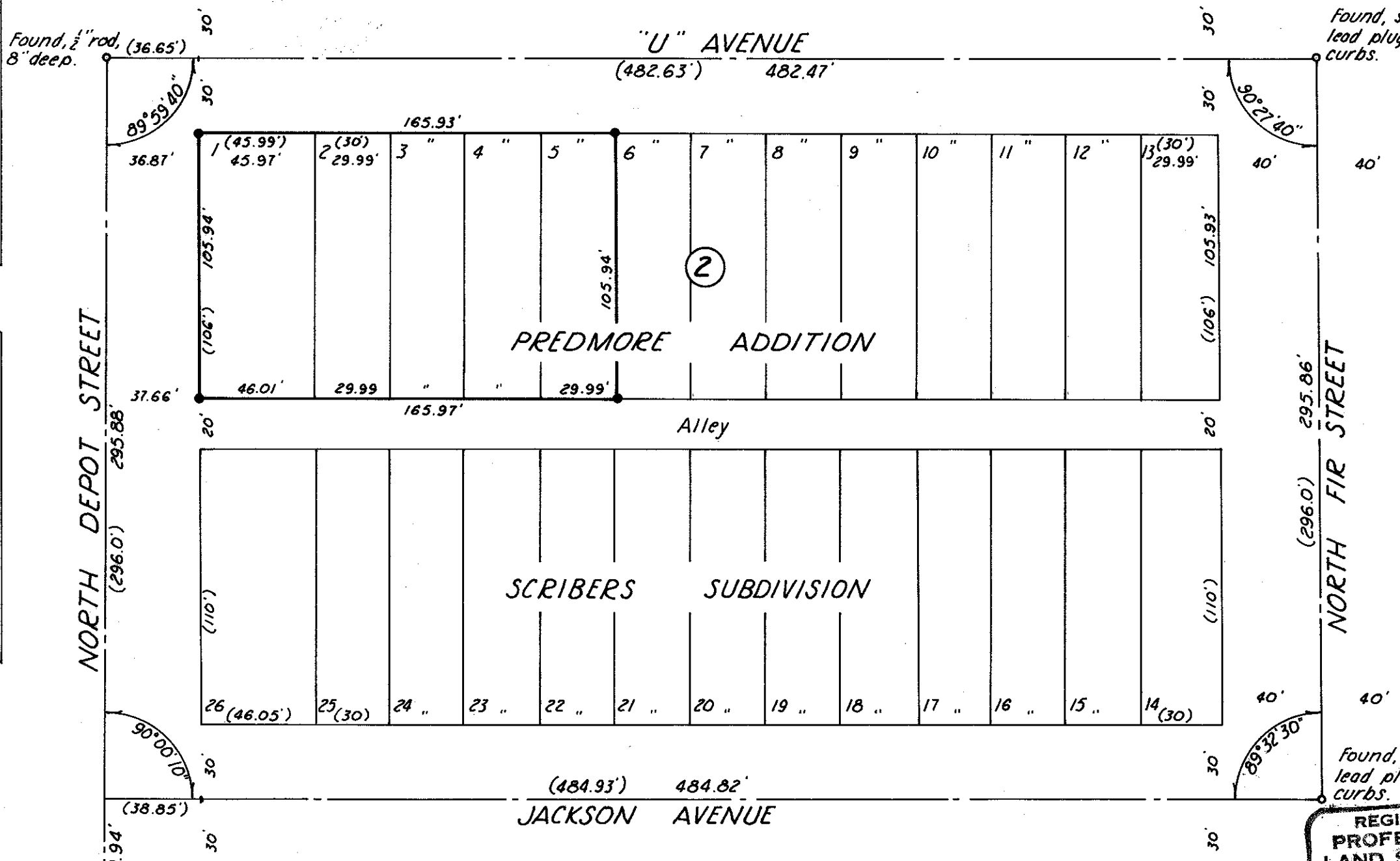


Found, 1/2" rod, (36.65')
8" deep.

Found, screw in
lead plug refs. in
curbs.



LEGEND

- Found mon. as noted.
 - Set 1/2" rebar except 1" rebar at NW cor. lot 1.
- (30) Corrected plat distance.

REGISTERED
PROFESSIONAL
LAND SURVEYOR

James D. Hawley
OREGON
SEPTEMBER 23, 1977
JAMES D. HAWLEY
1206

44-78

MAP OF SURVEY
LOTS 1 THRU 5, BLOCK 2, PREDMORE ADDITION
(CORRECTED PLAT) TO LA GRANDE, ORE.
Surveyed April 12, 1978 Scale 1"=50'
For Walt Rohde

Found, conc. mon.
with screw in
lead plug.