

FOUND BRASS GAP MARKED AS SHOWN

I FIND NO CORNERS ON THIS LINE FOR 2 MILES
THEREFOR ACCEPT THE K-TAG AND SPIRE
FOUND AS CALLED IN SURVEYS 15-70, 75-72,
AND 8-75 FOR EAST 1/4 CORNER OF SECT. 18

BASIS OF BEARING

FORWARD BEARING AS PUBLISHED BY THE U.S.C.
AND G.S. FROM Δ COLLEGE TO Δ VALLEY

DETAIL

REFERENCE MATERIAL

SURVEY NUMBERS:

- 15-70
- 20-71
- 75-72
- 3-73
- 26-74
- 8-75
- 58-77
- 6-78

DEED DESCRIPTIONS:

- BOOK K PAGE 476
- OTHERS TO NUMEROUS TO MENTION

LEGEND

- FOUND MONUMENT OF RECORD
- ⊙ FOUND OLD CORNER - SET 1" x 30" IRON PIPE WITH BRASS CAP MARKED AS SHOWN
- ⊙ SET 1" x 30" IRON PIPE WITH BRASS CAP AT PROPORTIONATE DISTANCE, MARKED AS SHOWN
- SET 5/8" x 30" IRON PIPE WITH PLASTIC CAP MARKED 8" x 4" SURVEY MARKER
- () RECORD BEARING AND DISTANCE IF OTHER THAN TRUE
- - - EXISTING FENCE

REGISTERED PROFESSIONAL LAND SURVEYOR

Duane I. Griffith

OREGON
JULY 12, 1984
DUANE I. GRIFFITH
644

BACETT, GRIFFITH & ASSOCIATES

La Grande, Oregon

Map of Survey

IN SECTIONS 19 AND 20

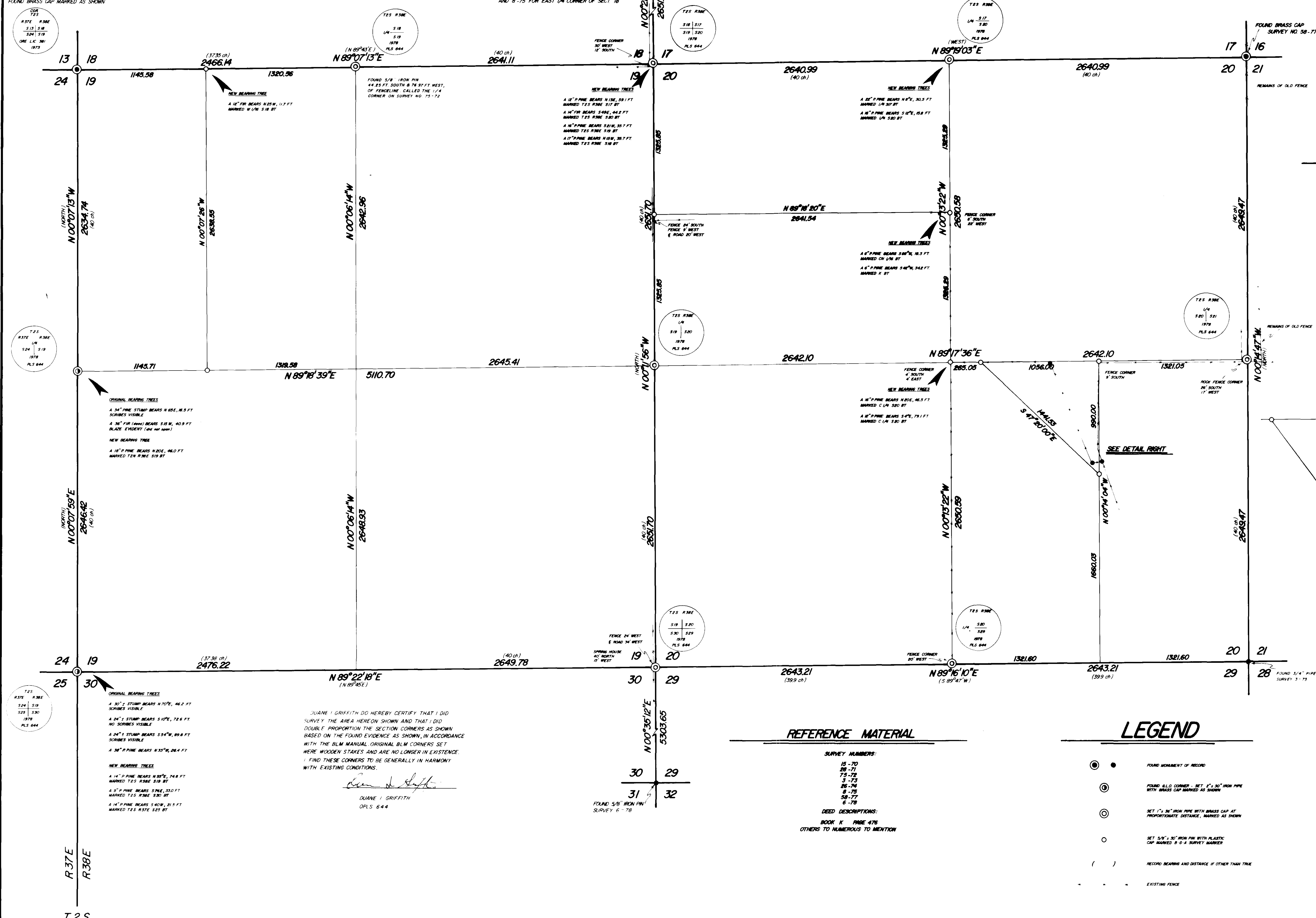
T2S, R38E W.M.

UNION COUNTY, OREGON

SURVEYED FOR BOISE CASCADE CORP

SURVEYED BY dig 4-78

Scale: 1" = 400' Drawn by S.S.Z dig 4-78



DUANE I. GRIFFITH DO HEREBY CERTIFY THAT I DID
DOUBLE PROPORTION THE SECTION CORNERS AS SHOWN
BASED ON THE FOUND EVIDENCE AS SHOWN, IN ACCORDANCE
WITH THE BLM MANUAL ORIGINAL BLM CORNERS SET
HERE WOODEN STAKES AND ARE NO LONGER IN EXISTENCE.
I FIND THESE CORNERS TO BE GENERALLY IN HARMONY
WITH EXISTING CONDITIONS.

Duane I. Griffith

DUANE I. GRIFFITH
DPLS 644