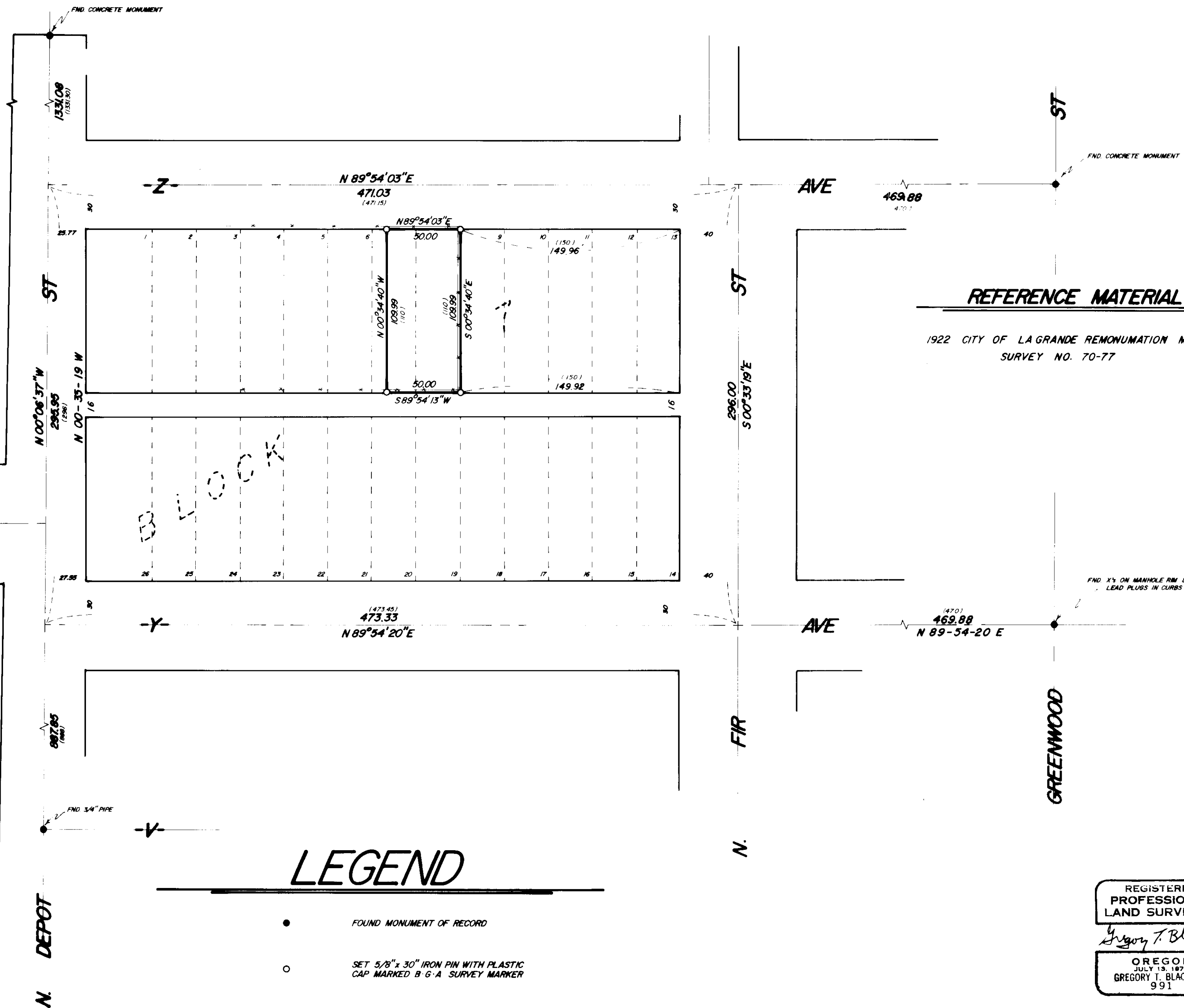




BASIS OF BEARING

FORWARD BEARING AS PUBLISHED BY THE
U.S.C. & G.S. FROM Δ COLLEGE TO Δ VALLEY



LEGEND

- FOUND MONUMENT OF RECORD
- SET 5/8" x 30" IRON PIN WITH PLASTIC CAP MARKED B-G-A SURVEY MARKER
- *—*—*— EXISTING FENCE
- - - - - CENTERLINE STREET
- () RECORD DISTANCE

REGISTERED
PROFESSIONAL
LAND SURVEYOR

Gregory T. Blackman

OREGON
JULY 13, 1979
GREGORY T. BLACKMAN
991

BAGETT, GRIFFITH & ASSOCIATES		
La Grande, Oregon		
Map of Survey		
THE EAST 90' OF LOTS 7 AND 8		
BLOCK 7		
PREDMORE ADDITION		
LA GRANDE		
UNION COUNTY, OREGON		
SURVEYED FOR	JOHN COLLINS	
SURVEYED BY	G T B	3 - 78
Scale: 1" = 50'	Drawn by: ssz	3 - 78