

BASIS OF BEARING

POLARIS OBSERVATION
AT EASTERN ELONGATION
AUGUST 1, 1977

MONUMENTS

- ▲ FOUND STEEL PINS
- SET 2 1/2" x 30" GALVANIZED PIPE WITH MARKED BRASS CAPS.
- SET 1" x 30" GALVANIZED PIPE WITH MARKED BRASS CAPS.

5TH & F STREETS, FOUND 1" x 1 1/2" STEEL PIN 1.5' BELOW THE ROAD.

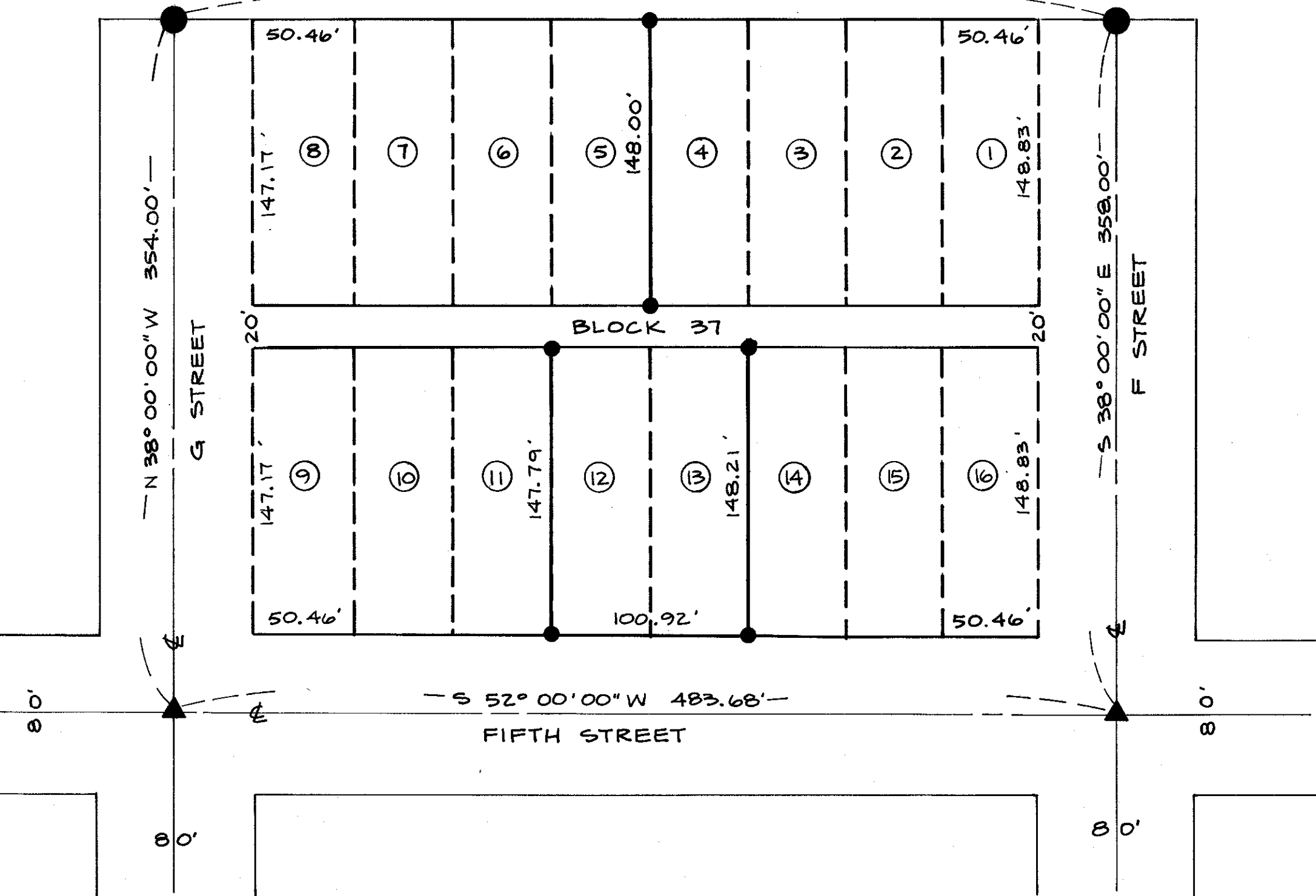
5TH & G STREETS, FOUND 1" x 1" STEEL PIN 0.6' BELOW THE ROAD.

NO MONUMENTS FOUND ON NW LINE. POSITIONS DETERMINED BY FENCE & TRANSMISSION LINE TO THE NORTH-EAST.

6.50' NW OF FENCE

— N 51° 31' 34" E 483.70' —

2.60' NW OF FENCE



REGISTERED
PROFESSIONAL
LAND SURVEYOR

Barry B. Barbour

OREGON
OCT. 17, 1975
BARRY B. BARBOUR
1051

DEPENDENT RESURVEY OF LOTS 1 - 8 & 12 - 16, BLOCK 37, NORTH POWDER, UNION COUNTY, OREGON

FOR ROBERT GORHAM, NORTH POWDER, OREGON
MARCH, 1978

1" = 60' **BARRY B. BARBOUR**
LAND SURVEYOR

27-78