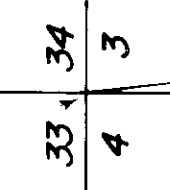
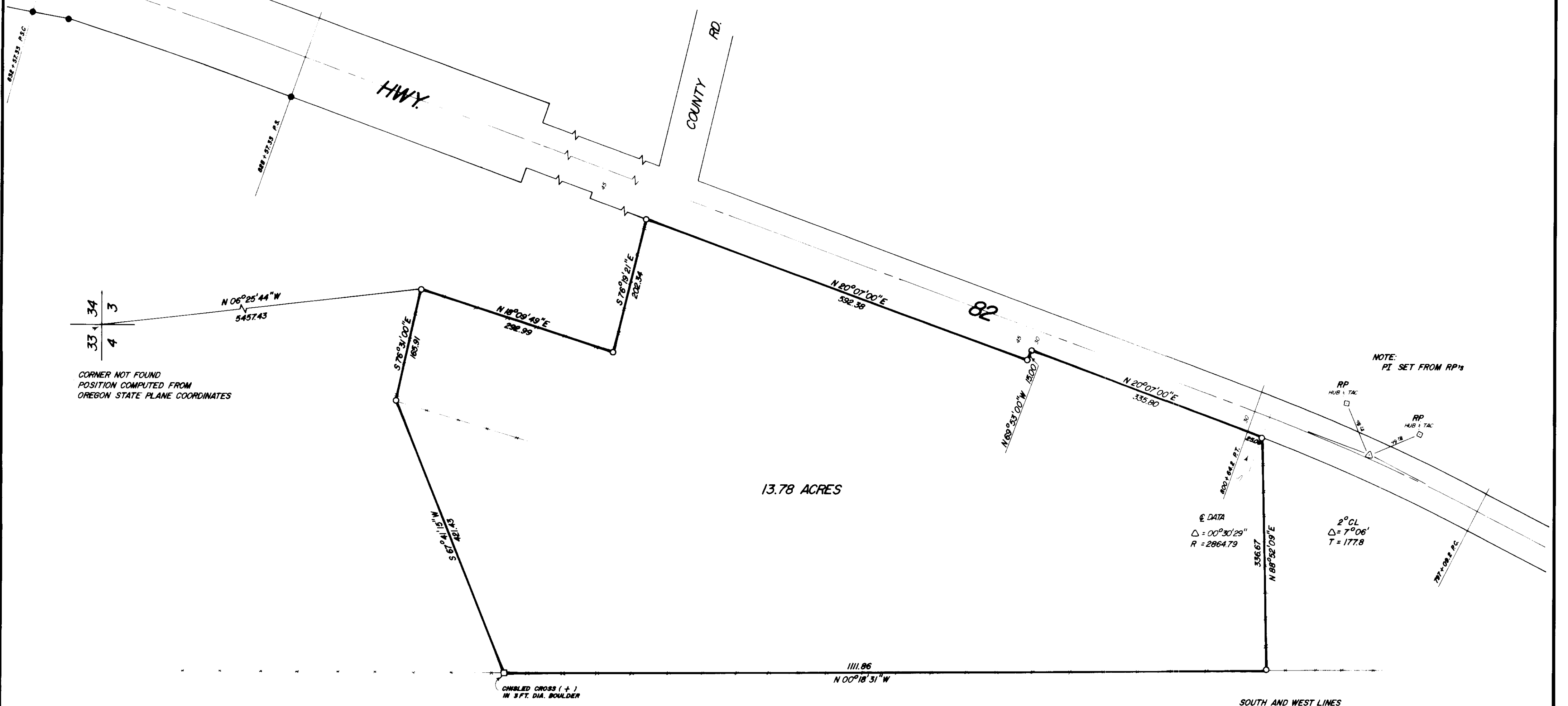




BASIS OF BEARING

SOLAR OBSERVATION



CORNER NOT FOUND
POSITION COMPUTED FROM
OREGON STATE PLANE COORDINATES

13.78 ACRES

CHUBBED CROSS (+)
IN 3 FT. DIA. BOULDER

SOUTH AND WEST LINES
BASED ON BOUNDARY AGREEMENTS

LEGEND

- FOUND MONUMENT OF RECORD
- SET 5/8" x 30" IRON PIN WITH PLASTIC CAP MARKED B G A SURVEY MARKER
- — — EXISTING FENCE
- - - - - CENTERLINE ROAD

REFERENCE MATERIAL

OREGON STATE HIGHWAY DEPARTMENT MAP NUMBERS:
28 - 17 - 10
88 - 16 - 17

REGISTERED
PROFESSIONAL
LAND SURVEYOR

Gregory J. Blackman

OREGON
JULY 13, 1978
GREGORY J. BLACKMAN
991

BAGETT, GRIFFITH & ASSOCIATES La Grande, Oregon		
Map of Survey		
PARCEL IN THE NE 1/4 OF SECTION 9		
T 1 S, R 39 E W.M.		
UNION COUNTY, OREGON		
SURVEYED FOR	JOHN SCHWENDEMAN	
SURVEYED BY	G T B	3 - 78
Scale: 1" = 100'	Drawn by: SSZ	3 - 78

25-78