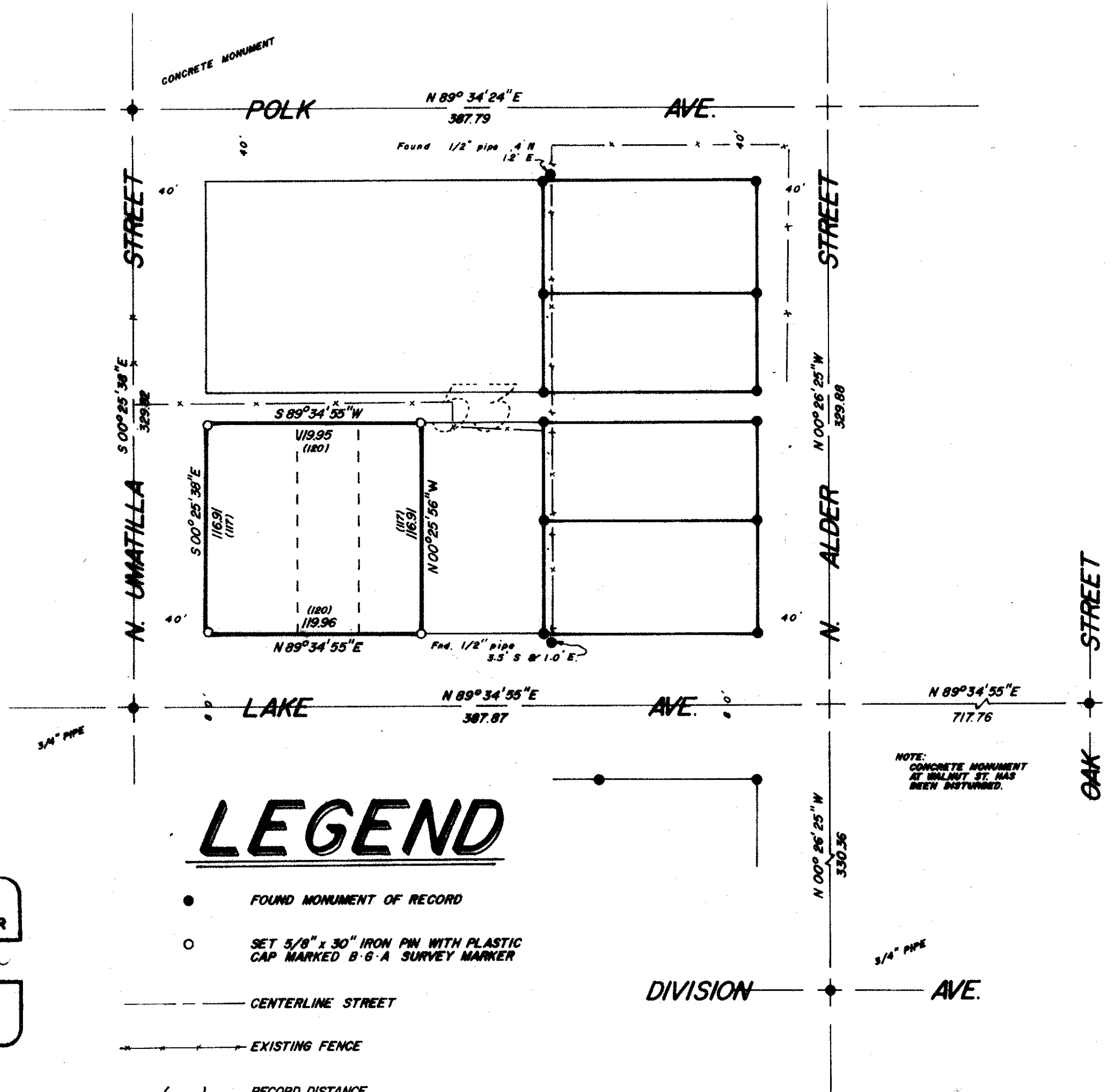




**BASIS OF BEARING**  
 FORWARD BEARING AS PUBLISHED BY THE  
 U.S.C. & G.S. FROM  $\Delta$  COLLEGE TO  $\Delta$  VALLEY.

**REFERENCE MATERIAL**  
 1922 CITY OF LA GRANDE REMONUMENTATION MAP  
 PLAT OF RIVERSIDE ADDITION  
 SURVEY NUMBERS:  
 28-63  
 66-77  
 80-77  
 92-77



# LEGEND

- FOUND MONUMENT OF RECORD
- SET 5/8" x 30" IRON PIN WITH PLASTIC CAP MARKED B-G-A SURVEY MARKER
- CENTERLINE STREET
- EXISTING FENCE
- ( ) RECORD DISTANCE

REGISTERED  
 PROFESSIONAL  
 LAND SURVEYOR  
 Gregory T. Blackman  
 OREGON  
 JULY 13, 1973  
 GREGORY T. BLACKMAN  
 991

<b>BAGETT, GRIFFITH &amp; ASSOCIATES</b>		
La Grande, Oregon		
Map of Survey		
LOTS 9, 10, 11		
BLOCK 53		
RIVERSIDE ADDITION		
LA GRANDE		
UNION COUNTY, OREGON		
SURVEYED FOR	MIKE GALDWELL	
SURVEYED BY	G T B	10/77
Scale: 1" = 60'	Drawn by: S S Z	10/77