



BASIS OF BEARING

SURVEY NO. 64-74

RIVER

STREET

RAILROAD

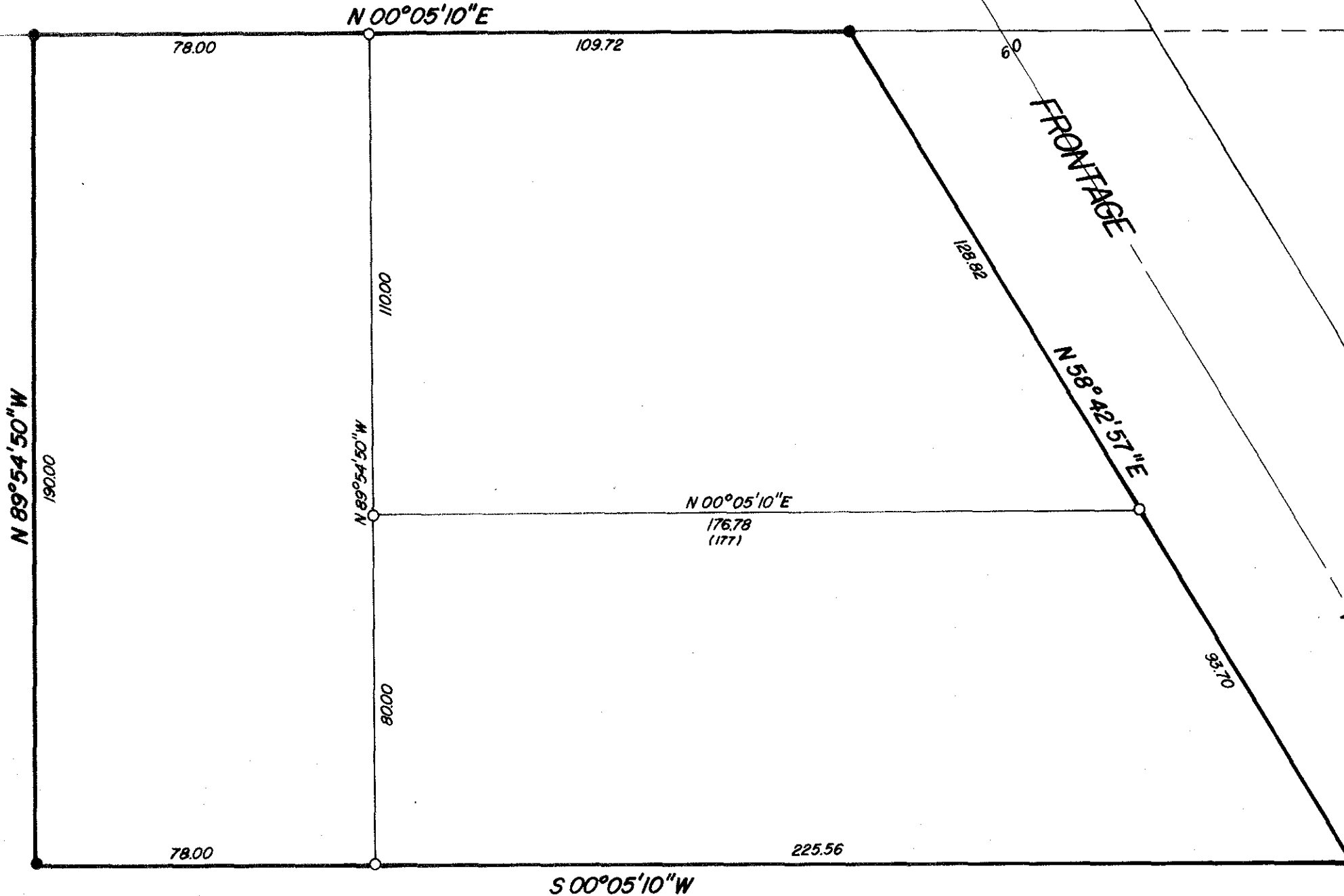
WALLOWA

H/M

R/M

FRONTAGE

ROAD



REGISTERED
PROFESSIONAL
LAND SURVEYOR

Gregory T. Blackman

OREGON
JULY 13, 1973
GREGORY T. BLACKMAN
991

REFERENCE MATERIAL

SURVEY NO. 64-74

LEGEND

- FOUND MONUMENT OF RECORD
- SET 5/8" x 30" REBAR WITH PLASTIC CAP MARKED B G A SURVEY MARKER
- () RECORD DISTANCE

BAGETT, GRIFFITH & ASSOCIATES

La Grande, Oregon

Map of Survey

PARCEL IN LOT 15

MAY PARK ADDITION

LA GRANDE
UNION COUNTY, OREGON

SURVEYED FOR **RON MOULTON**

SURVEYED BY **G T B** 1 / 78

Scale: 1" = 30' Drawn by: **S S Z** 1 / 78

8-78