

50 FT. CONTOURS

BLOCK 16

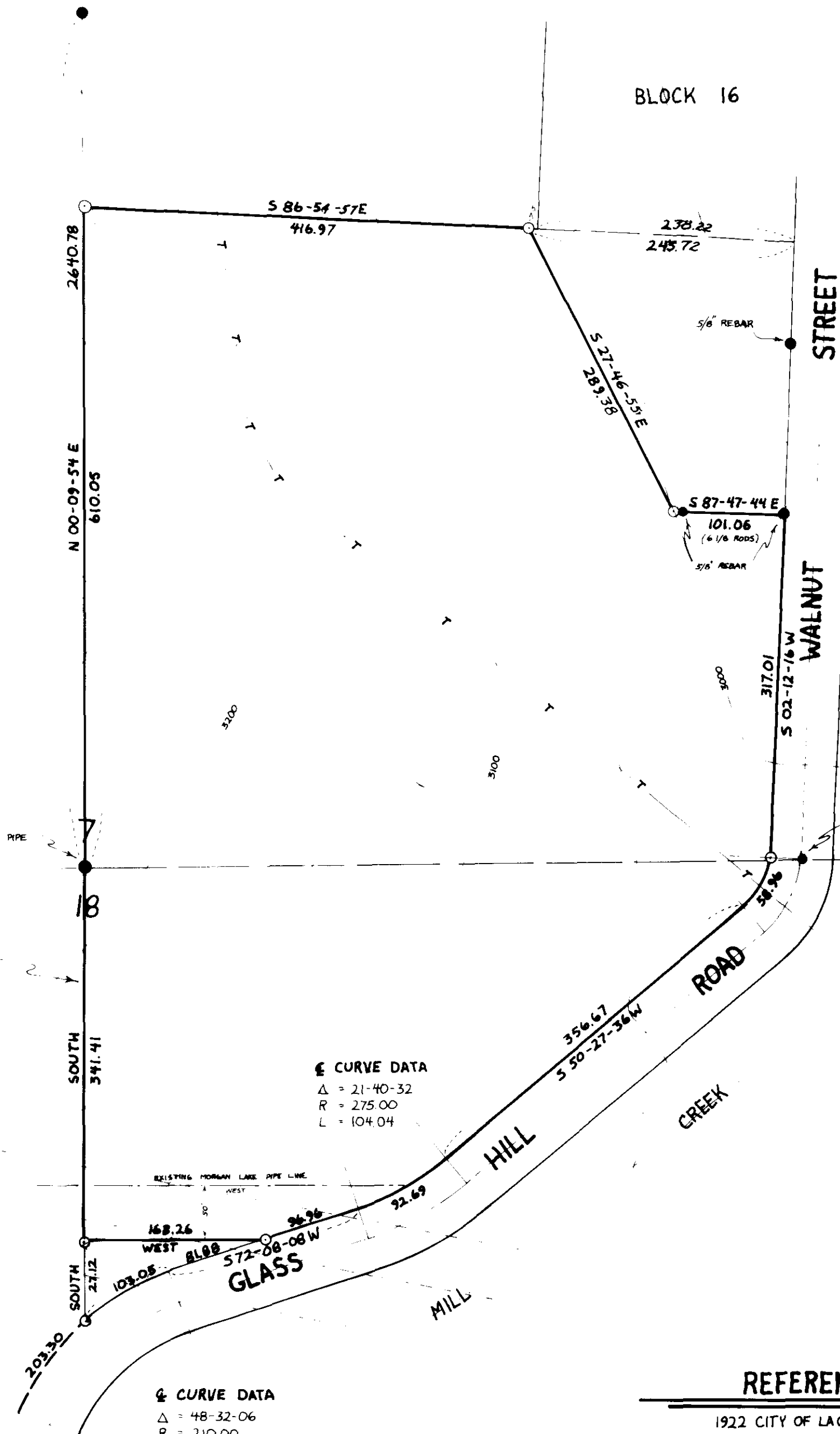


BASIS OF BEARING

FORWARD BEARING AS PUBLISHED BY THE U.S.C. & G.S.
FROM Δ COLLEGE TO Δ VALLEY

NOTE:

THE WEST LINE OF THIS SURVEY IS NOT NECESSARILY THE 1/4 SECTION LINE. OUR CLIENT DID NOT WISH IT TO BE LOCATED, WE THEREFORE RAN A LINE SOUTH TO INTERSECT THE GLASS HILL ROAD FOR THE PURPOSE OF CLOSURE.



☺ CURVE DATA
Δ = 48-15-20
R = 100.00
L = 84.22

☺ CURVE DATA
Δ = 21-40-32
R = 275.00
L = 104.04

☺ CURVE DATA
Δ = 48-32-06
R = 210.00
L = 177.89

LEGEND

- SET 5/8" x 30" IRON PIN WITH PLASTIC CAP MARKED B-G-A SURVEY MARKER
- FOUND MONUMENT OF RECORD
- T TELEPHONE CABLE
- CONTOUR LINE
- - - - - EXISTING MORGAN LAKE PIPE LINE
- BPA POWER TRANSMISSION LINE EASEMENT

REGISTERED PROFESSIONAL LAND SURVEYOR

Gregory T. Blackman
OREGON
JULY 13, 1978
GREGORY T. BLACKMAN
991

REFERENCE MATERIAL

1922 CITY OF LAGRANDE REMONUMENTATION MAP
SURVEY NO. 04-77

CONTOUR LINES BASED ON U.S.C. & G.S. QUAD SHEET FOR LA GRANDE SOUTHEAST

BAGETT, GRIFFITH & ASSOCIATES
La Grande, Oregon

Map of Survey
A PARCEL LOCATED IN THE SW 1/4 OF THE SE 1/4 OF SECTION 7 AND IN THE NW 1/4 OF THE NE 1/4 OF SECTION 18.
TWP 35, R 38 E WM
UNION COUNTY, OREGON

SURVEYED FOR	BOB FALLOWS	
SURVEYED BY	G. T. B.	12/77
Scale: 1" = 100'	Drawn by: S.S.Z.	12/77