



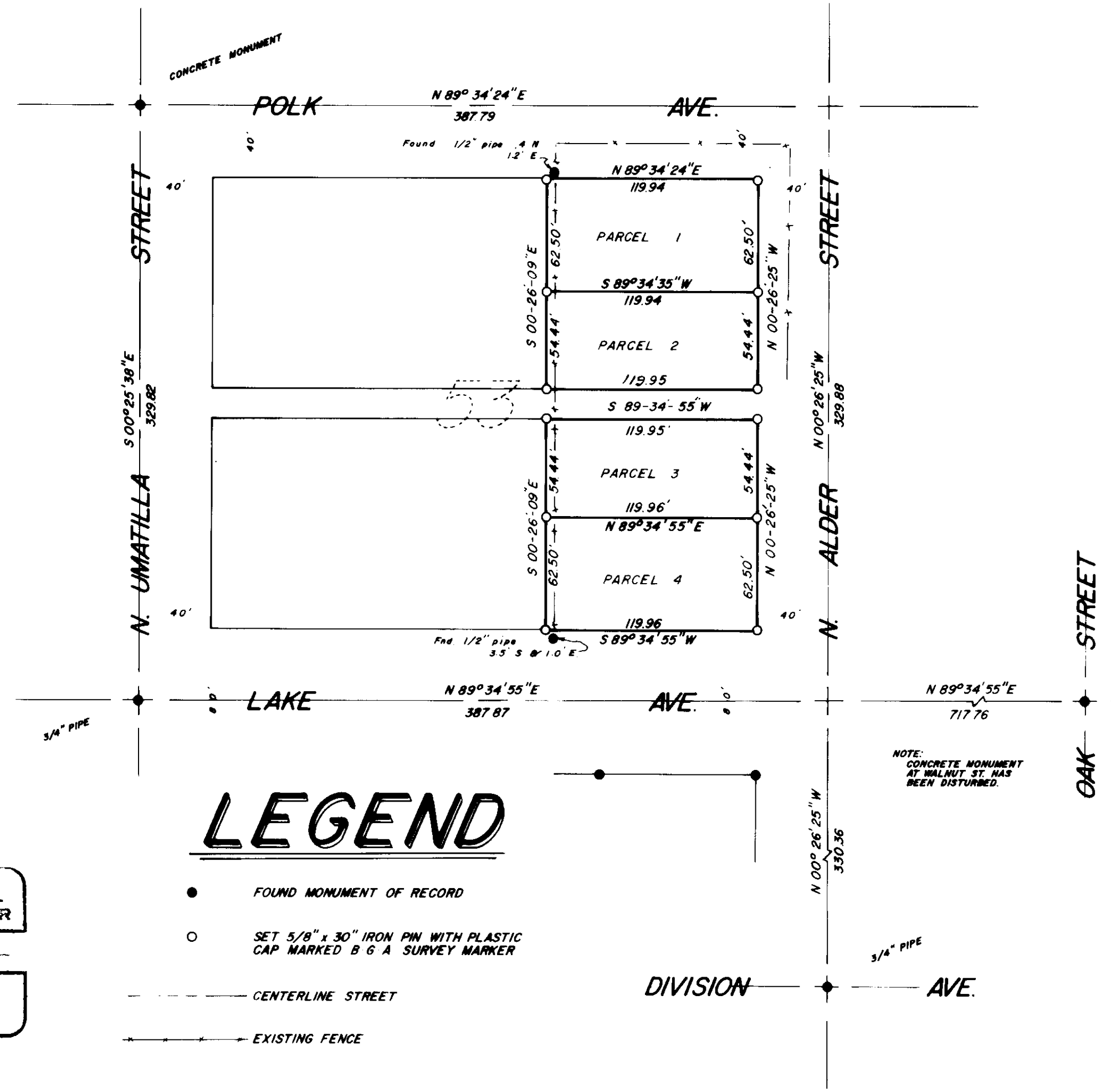
BASIS OF BEARING

FORWARD BEARING AS PUBLISHED BY THE U.S.C. & G.S. FROM Δ COLLEGE TO Δ VALLEY

REFERENCE MATERIAL

1922 CITY OF LA GRANDE REMONUMENTATION MAP
PLAT OF RIVERSIDE ADDITION

SURVEY NUMBERS:
66-77
80-77
28-63



LEGEND

- FOUND MONUMENT OF RECORD
- SET 5/8" x 30" IRON PIN WITH PLASTIC CAP MARKED B G A SURVEY MARKER
- CENTERLINE STREET
- EXISTING FENCE

REGISTERED
PROFESSIONAL
LAND SURVEYOR

Gregory T. Blackman

OREGON
JULY 13, 1973
GREGORY T. BLACKMAN
991

BAGETT, GRIFFITH & ASSOCIATES		
La Grande, Oregon		
Map of Survey		
LOTS 1,2,3,14,15,16		
BLOCK 53		
RIVERSIDE ADDITION		
LA GRANDE		
UNION COUNTY, OREGON		
SURVEYED FOR	ORLAND RUDD	
SURVEYED BY	G T B	10/77
Scale: 1" = 60'	Drawn by S S Z	10/77