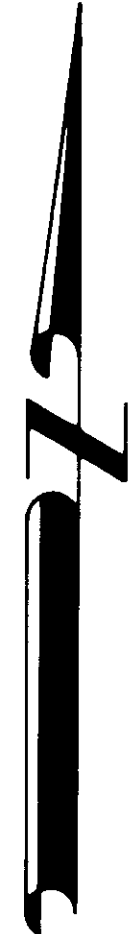


# REFERENCE MATERIAL

1922 CITY OF LA GRANDE REMONUMENTATION MAP  
SURVEY NUMBERS:

56-75  
57-75  
9-76  
66-77

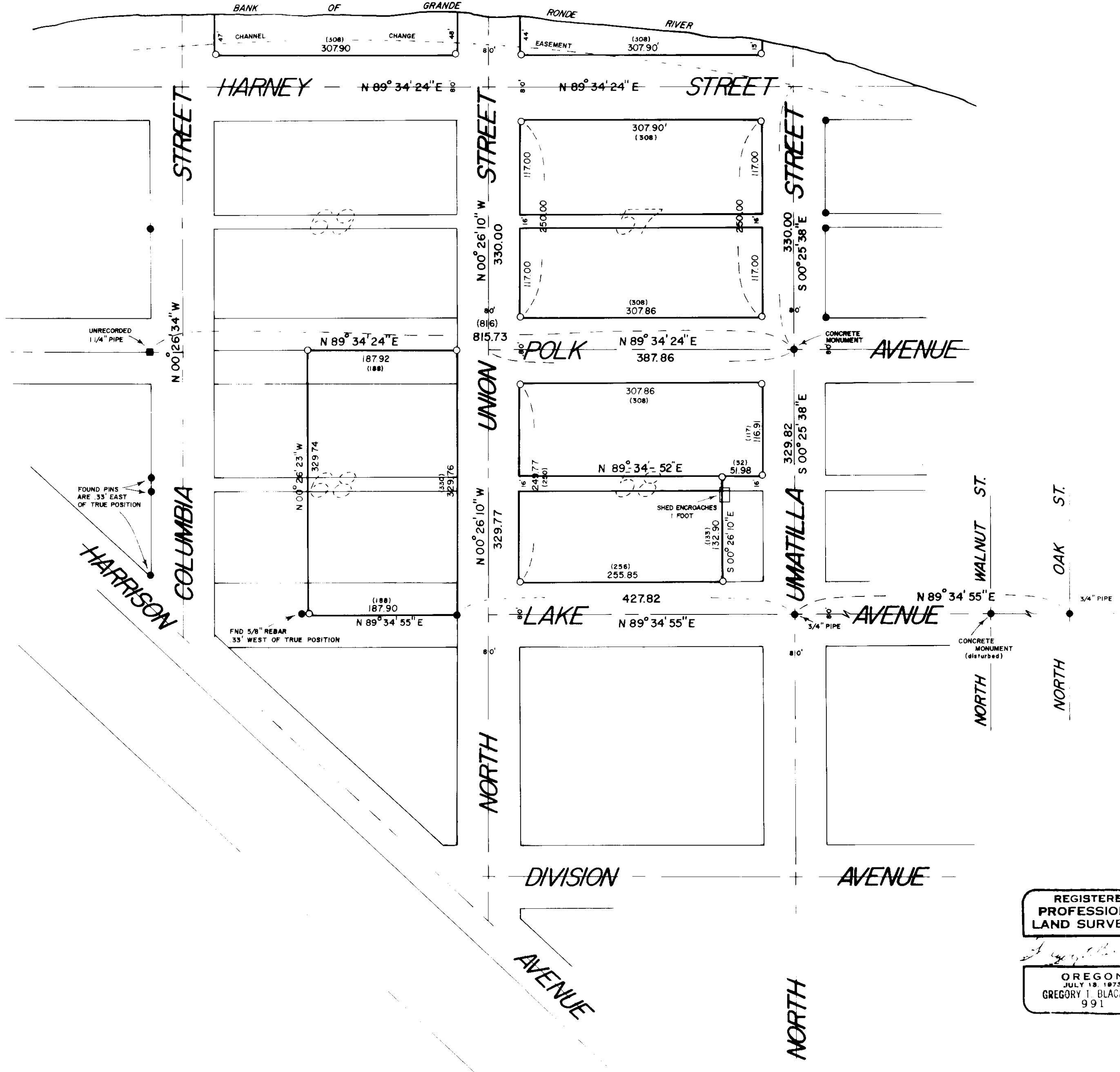


## BASIS OF BEARING

FORWARD BEARING AS PUBLISHED BY THE U.S.C. & G.S. FROM  $\Delta$  COLLEGE TO  $\Delta$  VALLEY

## LEGEND

- FOUND MONUMENT OF RECORD
- SET 5/8" x 30" REBAR WITH PLASTIC CAP MARKED B-G-A SURVEY MARKER
- CENTERLINE STREET
- EXISTING FENCE
- UNRECORDED PIN
- ( ) RECORD DISTANCE



REGISTERED PROFESSIONAL LAND SURVEYOR

OREGON  
JULY 13, 1975  
GREGORY I. BLACKMAN  
991

### BAGETT, GRIFFITH & ASSOCIATES

La Grande, Oregon  
Map of Survey  
PARCELS LOCATED IN  
BLOCKS 56, 57, 58, 68, 69, 70  
RIVERSIDE ADDITION  
LA GRANDE  
UNION COUNTY, OREGON

SURVEYED FOR	SKIP GREGORY	
SURVEYED BY	G T B	8 / 77
Scale: 1" = 100'	Drawn by: S S Z	8 / 77

80 77